

## Anti-LXN Mouse Monoclonal Antibody [Clone ID: OTI2G4]

Catalog Number: M09395-1

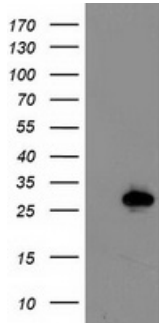
### Overview

Product Name	Anti-LXN Mouse Monoclonal Antibody [Clone ID: OTI2G4]
Reactive Species	Human, Mouse
Description	Boster Bio LXN mouse monoclonal antibody, clone OTI2G4 (formerly 2G4). Catalog# M09395-1. Tested in IHC, WB. This antibody reacts with Human, Mouse.
Application	IHC, WB
Clonality	Monoclonal OTI2G4
Formulation	PBS (pH 7.3) containing 1% stabilizing protein, 50% glycerol and 0.02% sodium azide. This antibody is supplied in a stabilized formulation. Compatibility with conjugation reactions depends on the chemistry of the conjugation method used. For conjugation methods that are not compatible with the stabilizing components present in this formulation, a carrier-free antibody format is required.
Storage Instructions	Store at -20°C as received.
Host	Mouse
Uniprot ID	Q9BS40

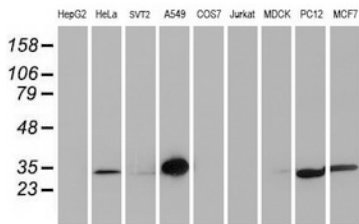
### Technical Details

Immunogen	Full length human recombinant protein of human LXN (NP_064554) produced in HEK293T cell.
Isotype	IgG1
Concentration	1 mg/ml
Purification	Purified from mouse ascites fluids or tissue culture supernatant by affinity chromatography (protein A/G)
Suggested Dilutions	WB 1:500~2000 IHC 1:150

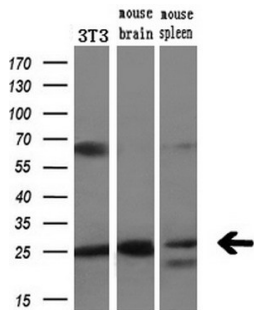
## Anti-LXN Mouse Monoclonal Antibody [Clone ID: OTI2G4] (M09395-1) Images



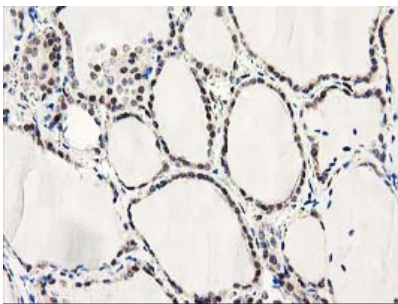
HEK293T cells were transfected with the pCMV6-ENTRY control (Left lane) or pCMV6-ENTRY LXN (Right lane) cDNA for 48 hrs and lysed. Equivalent amounts of cell lysates (5 ug per lane) were separated by SDS-PAGE and immunoblotted with anti-LXN.



Western blot analysis of extracts (35ug) from 9 different cell lines by using anti-LXN monoclonal antibody.



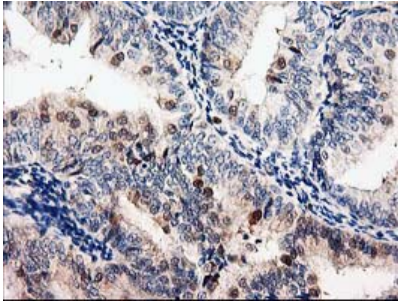
Western blot analysis of extracts (10ug) from a mouse cell line and 2 different mouse tissues by using anti-LXN monoclonal antibody (1:200).



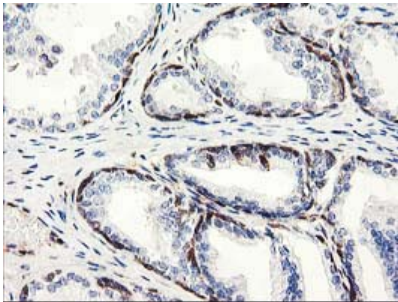
Immunohistochemical staining of paraffin-embedded Human thyroid tissue within the normal limits using anti-LXN mouse monoclonal antibody. (Heat-induced epitope retrieval by 10mM citric buffer)



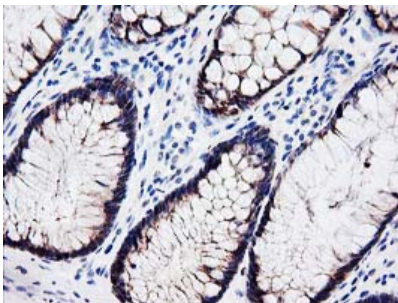
Immunohistochemical staining of paraffin-embedded Human endometrium tissue within the normal limits using anti-LXN mouse monoclonal antibody. (Heat-induced epitope retrieval by 10mM citric buffer)



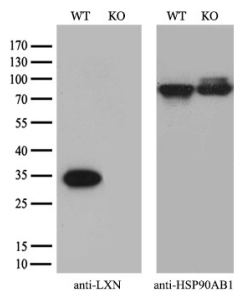
Immunohistochemical staining of paraffin-embedded Adenocarcinoma of Human endometrium tissue using anti-LXN mouse monoclonal antibody. (Heat-induced epitope retrieval by 10mM citric buffer)



Immunohistochemical staining of paraffin-embedded Human prostate tissue within the normal limits using anti-LXN mouse monoclonal antibody. (Heat-induced epitope retrieval by 10mM citric buffer)



Immunohistochemical staining of paraffin-embedded Human colon tissue within the normal limits using anti-LXN mouse monoclonal antibody. (Heat-induced epitope retrieval by 10mM citric buffer)



Equivalent amounts of cell lysates (10 ug per lane) of wild-type HeLa cells (WT) and LXN-Knockout HeLa cells (KO) were separated by SDS-PAGE and immunoblotted with anti-LXN monoclonal antibody M09395-1 (1:2000). Then the blotted membrane was stripped and reprobed with anti-HSP90 antibody as a loading control.

## Submit a product review to [Biocompare.com](https://www.biocompare.com)

Submit a review of this product to [Biocompare.com](https://www.biocompare.com) to receive a \$20 Amazon.com giftcard! Your reviews help your fellow scientists make the right decisions. Thank you for your contribution.



Anti-LXN Mouse Monoclonal Antibody [Clone ID: OTI2G4]

For Research Use Only. Not for use in diagnostic procedures.