

Anti-IQSEC2 Antibody (Center)

Catalog Number: M09440

About IQSEC2

GTPase-activating protein (GAP) for ADP ribosylation factor 6 (ARF6).

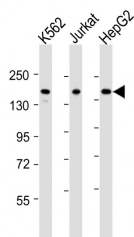
Overview

Product Name	Anti-IQSEC2 Antibody (Center)
Reactive Species	Human
Description	Boster Bio Anti-IQSEC2 Antibody (Center) (Catalog # M09440). Tested in WB application(s). This antibody reacts with Human.
Application	WB
Clonality	Polyclonal
Formulation	Purified polyclonal antibody supplied in PBS with 0.09% (W/V) sodium azide.
Storage Instructions	Maintain refrigerated at 2-8°C for up to 2 weeks. For long-term storage, store at -20°C in small aliquots to prevent freeze-thaw cycles.
Host	Rabbit
Uniprot ID	Q5JU85

Technical Details

Immunogen	This IQSEC2 antibody is generated from a rabbit immunized with a KLH conjugated synthetic peptide between 451-484 amino acids from the Central region of human IQSEC2.
Predicted Reactive Species	Bovine
Isotype	Rabbit IgG
Purification	This antibody is purified through a protein A column, followed by peptide affinity purification.
Suggested Dilutions	WB: 1:2000

Anti-IQSEC2 Antibody (Center) (M09440) Images



All lanes : Anti-IQSEC2 Antibody (Center) at 1:2000 dilution
Lane 1: K562 whole cell lysates
Lane 2: Jurkat whole cell lysates
Lane 3: HepG2 whole cell lysates
Lysates/proteins at 20 µg per lane. Secondary Goat Anti-Rabbit IgG, (H+L), Peroxidase conjugated at 1/10000 dilution
Predicted band size : 162 kDa
Blocking/Dilution buffer: 5% NFD/MTBST.

Submit a product review to Biocompare.com

Submit a review of this product to Biocompare.com to receive a \$20 Amazon.com giftcard! Your reviews help your fellow scientists make the right decisions. Thank you for your contribution.



Anti-IQSEC2 Antibody (Center)

For Research Use Only. Not for use in diagnostic procedures.