

## Anti-PCDH7 Mouse Monoclonal Antibody [Clone ID: OTI2G6]

Catalog Number: M09495-1

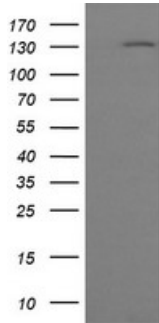
### Overview

Product Name	Anti-PCDH7 Mouse Monoclonal Antibody [Clone ID: OTI2G6]
Reactive Species	Human, Mouse, Rat
Description	Boster Bio PCDH7 mouse monoclonal antibody, clone OTI2G6 (formerly 2G6). Catalog# M09495-1. Tested in IF, IHC, WB. This antibody reacts with Human, Mouse, Rat.
Application	IF, IHC, WB
Clonality	Monoclonal OTI2G6
Formulation	PBS (pH 7.3) containing 1% stabilizing protein, 50% glycerol and 0.02% sodium azide. This antibody is supplied in a stabilized formulation. Compatibility with conjugation reactions depends on the chemistry of the conjugation method used. For conjugation methods that are not compatible with the stabilizing components present in this formulation, a carrier-free antibody format is required.
Storage Instructions	Store at -20°C as received.
Host	Mouse
Uniprot ID	O60245

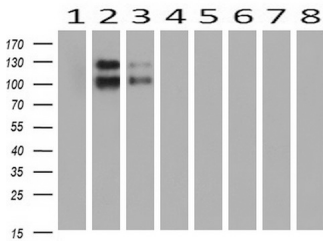
### Technical Details

Immunogen	Full length human recombinant protein of human PCDH7 (NP_115833) produced in HKE293T cell.
Isotype	IgG1
Concentration	1 mg/ml
Purification	Purified from mouse ascites fluids or tissue culture supernatant by affinity chromatography (protein A/G)
Suggested Dilutions	WB 1:200~2000 IHC 1:150 IF 1:100

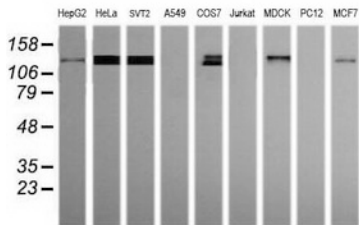
## Anti-PCDH7 Mouse Monoclonal Antibody [Clone ID: OTI2G6] (M09495-1) Images



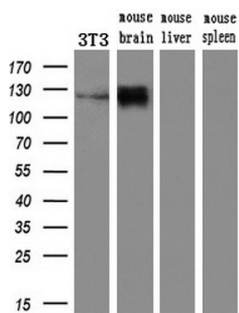
HEK293T cells were transfected with the pCMV6-ENTRY control (Left lane) or pCMV6-ENTRY PCDH7 (Right lane) cDNA for 48 hrs and lysed. Equivalent amounts of cell lysates (5 ug per lane) were separated by SDS-PAGE and immunoblotted with anti-PCDH7.



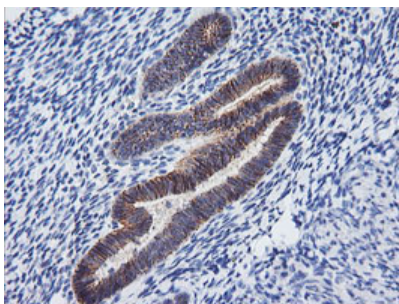
Western blot analysis of extracts (10ug) from 8 Human tissue by using anti-PCDH7 monoclonal antibody at 1:200 (1: Testis; 2: Uterus; 3: Breast; 4: Brain; 5: Liver; 6: Ovary; 7: Thyroid gland; 8: Colon).



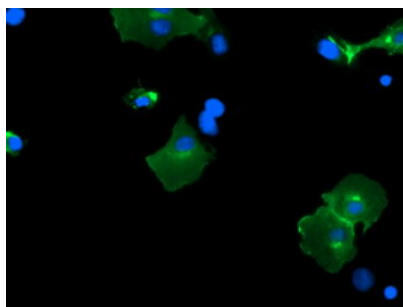
Western blot analysis of extracts (35ug) from 9 different cell lines by using anti-PCDH7 monoclonal antibody (HepG2: human; HeLa: human; SVT2: mouse; A549: human; COS7: monkey; Jurkat: human; MDCK: canine; PC12: rat; MCF7: human).



Western blot analysis of extracts (10ug) from a mouse cell line and 3 different mouse tissues by using anti-PCDH7 monoclonal antibody (1:200).



Immunohistochemical staining of paraffin-embedded Human endometrium tissue within the normal limits using anti-PCDH7 mouse monoclonal antibody. (Heat-induced epitope retrieval by 10mM citric buffer)



Anti-PCDH7 mouse monoclonal antibody (M09495-1)  
immunofluorescent staining of COS7 cells transiently  
transfected by pCMV6-ENTRY PCDH7.

### Submit a product review to [Biocompare.com](https://www.biocompare.com)

Submit a review of this product to [Biocompare.com](https://www.biocompare.com) to receive a \$20 Amazon.com giftcard! Your reviews help your fellow scientists make the right decisions. Thank you for your contribution.



Anti-PCDH7 Mouse Monoclonal Antibody [Clone ID: OTI2G6]

For Research Use Only. Not for use in diagnostic procedures.