

Anti-XPNPEP1 Mouse Monoclonal Antibody [Clone ID: OTI1E3]

Catalog Number: M09499

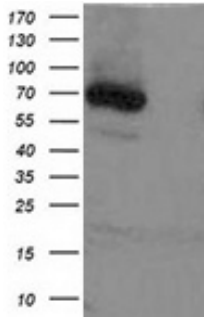
Overview

Product Name	Anti-XPNPEP1 Mouse Monoclonal Antibody [Clone ID: OTI1E3]
Reactive Species	Human, Mouse, Rat
Description	Boster Bio Anti-XPNPEP1 mouse monoclonal antibody, clone OTI1E3 (formerly 1E3). Catalog# M09499. Tested in IF, IHC, WB. This antibody reacts with Human, Mouse, Rat.
Application	IF, IHC, WB
Clonality	Monoclonal OTI1E3
Formulation	PBS (pH 7.3) containing 1% BSA, 50% glycerol and 0.02% sodium azide.
Storage Instructions	Store at -20°C as received.
Host	Mouse
Uniprot ID	Q9NQW7

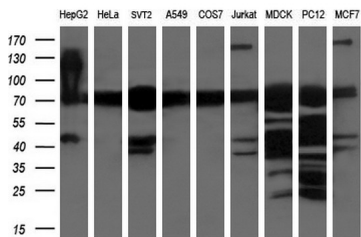
Technical Details

Immunogen	Full length human recombinant protein of human XPNPEP1 (NP_065116) produced in HEK293T cell.
Isotype	IgG1
Concentration	1 mg/ml
Purification	Purified from mouse ascites fluids or tissue culture supernatant by affinity chromatography (protein A/G)
Suggested Dilutions	Dilute the sample so that the expected range of concentrations fall within the detection range of this kit. If the expected range of concentration is unknown, a pilot test should be conducted to decide the optimal dilution ratio for your samples. Some PubMed article(s) citing the expression level of this target are as follows:

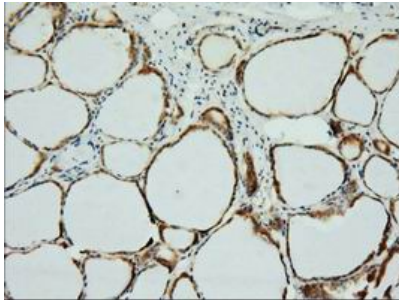
Anti-XPNPEP1 Mouse Monoclonal Antibody [Clone ID: OTI1E3] (M09499) Images



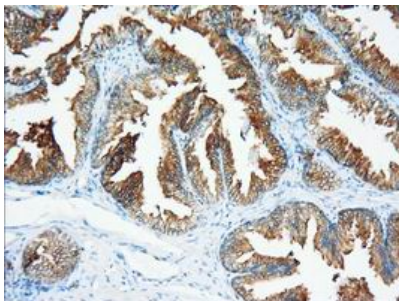
HEK293T cells were transfected with pCMV6-ENTRY XPNPEP1 or the pCMV6-ENTRY control (Right lane) cDNA for 48 hrs and lysed. Equivalent amounts of cell lysates (5 ug per lane) were separated by SDS-PAGE and immunoblotted with anti-XPNPEP1.



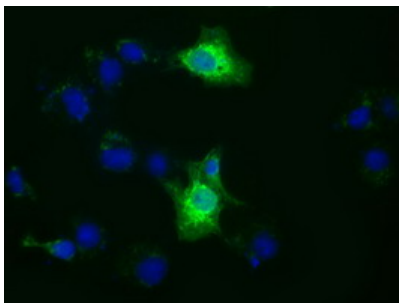
Western blot analysis of extracts (35ug) from 9 different cell lines by using anti-XPNPEP1 monoclonal antibody (HepG2: human; HeLa: human; SVT2: mouse; A549: human; COS7: monkey; Jurkat: human; MDCK: canine; PC12: rat; MCF7: human) (1:200).



Immunohistochemical staining of paraffin-embedded Human thyroid tissue within the normal limits using anti-XPNPEP1 mouse monoclonal antibody. (Heat-induced epitope retrieval by 10mM citric buffer)



Immunohistochemical staining of paraffin-embedded Human prostate tissue within the normal limits using anti-XPNPEP1 mouse monoclonal antibody. (Heat-induced epitope retrieval by 10mM citric buffer)



Anti-XPNPEP1 mouse monoclonal antibody (M09499) immunofluorescent staining of COS7 cells transiently transfected by pCMV6-ENTRY XPNPEP1.

Submit a product review to Biocompare.com

Submit a review of this product to Biocompare.com to receive a \$20 Amazon.com giftcard! Your reviews help your fellow scientists make the right decisions. Thank you for your contribution.



Anti-XPNPEP1 Mouse Monoclonal Antibody [Clone ID: OTI1E3]