

Anti-ALDH3B1 Mouse Monoclonal Antibody [Clone ID: OTI2F6]

Catalog Number: M09556

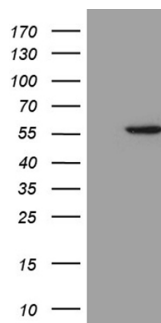
Overview

Product Name	Anti-ALDH3B1 Mouse Monoclonal Antibody [Clone ID: OTI2F6]
Reactive Species	Human, Rat
Description	Boster Bio ALDH3B1 mouse monoclonal antibody, clone OTI2F6. Catalog# M09556. Tested in WB. This antibody reacts with Human, Rat.
Application	WB
Clonality	Monoclonal OTI2F6
Formulation	PBS (pH 7.3) containing 1% stabilizing protein, 50% glycerol and 0.02% sodium azide. This antibody is supplied in a stabilized formulation. Compatibility with conjugation reactions depends on the chemistry of the conjugation method used. For conjugation methods that are not compatible with the stabilizing components present in this formulation, a carrier-free antibody format is required.
Storage Instructions	Store at -20°C as received.
Host	Mouse
Uniprot ID	P43353

Technical Details

Immunogen	Human recombinant protein fragment corresponding to amino acids 1-465 of human ALDH3B1 (NP_000685) produced in E.coli.
Isotype	IgG1
Concentration	1 mg/ml
Purification	Purified from mouse ascites fluids or tissue culture supernatant by affinity chromatography (protein A/G)
Suggested Dilutions	WB 1:2000

Anti-ALDH3B1 Mouse Monoclonal Antibody [Clone ID: OTI2F6] (M09556) Images



HEK293T cells were transfected with the pCMV6-ENTRY control (Left lane) or pCMV6-ENTRY ALDH3B1 (Right lane) cDNA for 48 hrs and lysed. Equivalent amounts of cell lysates (5 ug per lane) were separated by SDS-PAGE and immunoblotted with anti-ALDH3B1 (1:2000).

Submit a product review to Biocompare.com

Submit a review of this product to Biocompare.com to receive a \$20 Amazon.com giftcard! Your reviews help your fellow scientists make the right decisions. Thank you for your contribution.



Anti-ALDH3B1 Mouse Monoclonal Antibody [Clone ID: OTI2F6]

For Research Use Only. Not for use in diagnostic procedures.