

Anti-NIT1 Mouse Monoclonal Antibody [Clone ID: OTI3A11]

Catalog Number: M09715

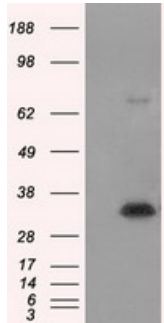
Overview

Product Name	Anti-NIT1 Mouse Monoclonal Antibody [Clone ID: OTI3A11]
Reactive Species	Human, Mouse, Rat
Description	Boster Bio Anti-NIT1 mouse monoclonal antibody, clone OTI3A11 (formerly 3A11). Catalog# M09715. Tested in FC, IF, IHC, WB. This antibody reacts with Human, Mouse, Rat.
Application	Flow Cytometry, IF, IHC, WB
Clonality	Monoclonal OTI3A11
Formulation	PBS (pH 7.3) containing 1% stabilizing protein, 50% glycerol and 0.02% sodium azide. This antibody is supplied in a stabilized formulation. Compatibility with conjugation reactions depends on the chemistry of the conjugation method used. For conjugation methods that are not compatible with the stabilizing components present in this formulation, a carrier-free antibody format is required.
Storage Instructions	Store at -20°C as received.
Host	Mouse
Uniprot ID	Q86X76

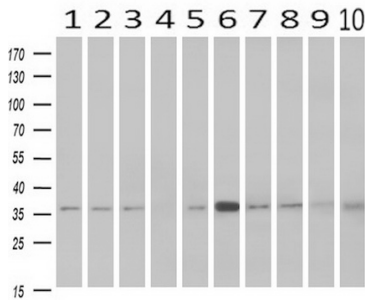
Technical Details

Immunogen	Full length human recombinant protein of human NIT1 (NP_005591) produced in HEK293T cell.
Isotype	IgG1
Concentration	0.87 mg/ml
Purification	Purified from mouse ascites fluids or tissue culture supernatant by affinity chromatography (protein A/G)
Suggested Dilutions	WB 1:2000 IHC 1:50 IF 1:100 Flow Cytometry 1:100

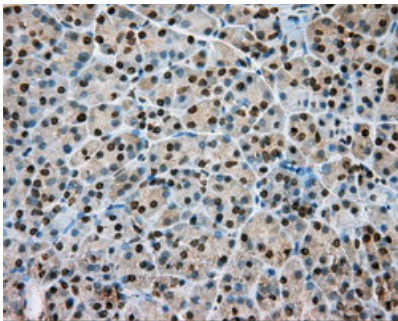
Anti-NIT1 Mouse Monoclonal Antibody [Clone ID: OTI3A11] (M09715) Images



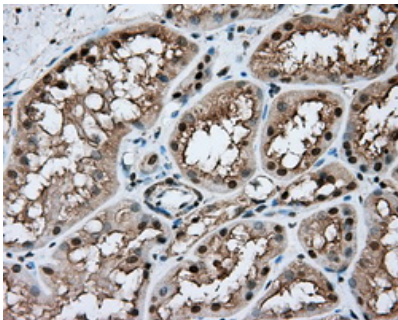
HEK293T cells were transfected with the pCMV6-ENTRY control (Left lane) or pCMV6-ENTRY NIT1 (Right lane) cDNA for 48 hrs and lysed. Equivalent amounts of cell lysates (5 ug per lane) were separated by SDS-PAGE and immunoblotted with anti-NIT1.



Western blot analysis of extracts (10ug) from 10 Human tissue by using anti-NIT1 monoclonal antibody at 1:500 (1: Testis; 2: Omentum; 3: Uterus; 4: Breast; 5: Brain; 6: Liver; 7: Ovary; 8: Thyroid gland; 9: colon; 10: spleen).

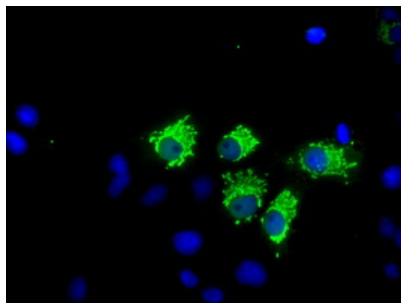
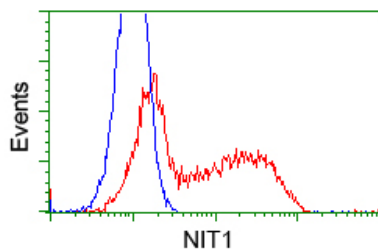


Immunohistochemical staining of paraffin-embedded pancreas tissue within the normal limits using anti-NIT1 mouse monoclonal antibody. (Heat-induced epitope retrieval by 10mM citric buffer)

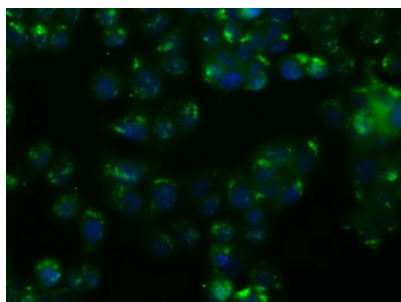


Immunohistochemical staining of paraffin-embedded Kidney tissue within the normal limits using anti-NIT1 mouse monoclonal antibody. (Heat-induced epitope retrieval by 10mM citric buffer)

HEK293T cells transfected with either pCMV6-ENTRY NIT1 (Red) or empty vector control plasmid (Blue) were immunostained with anti-NIT1 mouse monoclonal (M09715)



Anti-NIT1 mouse monoclonal antibody (M09715) immunofluorescent staining of COS7 cells transiently transfected by pCMV6-ENTRY NIT1.



Immunofluorescent staining of HT29 cells using anti-NIT1 mouse monoclonal antibody (M09715).

Submit a product review to [Biocompare.com](https://www.biocompare.com)

Submit a review of this product to [Biocompare.com](https://www.biocompare.com) to receive a \$20 Amazon.com giftcard! Your reviews help your fellow scientists make the right decisions. Thank you for your contribution.



Anti-NIT1 Mouse Monoclonal Antibody [Clone ID: OT13A11]

For Research Use Only. Not for use in diagnostic procedures.