

Anti-LRRC50 (DNAAF1) Mouse Monoclonal Antibody [Clone ID: OTI4E4]

Catalog Number: M09808

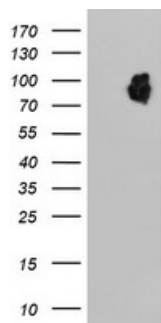
Overview

Product Name	Anti-LRRC50 (DNAAF1) Mouse Monoclonal Antibody [Clone ID: OTI4E4]
Reactive Species	Human
Description	Boster Bio LRRC50 mouse monoclonal antibody, clone OTI4E4 (formerly 4E4). Catalog# M09808. Tested in IF, WB. This antibody reacts with Human.
Application	IF, WB
Clonality	Monoclonal OTI4E4
Formulation	PBS (pH 7.3) containing 1% stabilizing protein, 50% glycerol and 0.02% sodium azide. This antibody is supplied in a stabilized formulation. Compatibility with conjugation reactions depends on the chemistry of the conjugation method used. For conjugation methods that are not compatible with the stabilizing components present in this formulation, a carrier-free antibody format is required.
Storage Instructions	Store at -20°C as received.
Host	Mouse
Uniprot ID	Q8NEP3

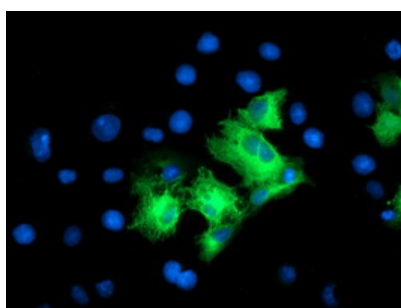
Technical Details

Immunogen	Full length human recombinant protein of human LRRC50 (NP_848547) produced in HEK293T cell.
Isotype	IgG1
Concentration	0.76 mg/ml
Purification	Purified from mouse ascites fluids or tissue culture supernatant by affinity chromatography (protein A/G)
Suggested Dilutions	WB 1:2000 IF 1:100

Anti-LRRC50 (DNAAF1) Mouse Monoclonal Antibody [Clone ID: OTI4E4] (M09808) Images



HEK293T cells were transfected with the pCMV6-ENTRY control (Left lane) or pCMV6-ENTRY LRRC50 (Right lane) cDNA for 48 hrs and lysed. Equivalent amounts of cell lysates (5 ug per lane) were separated by SDS-PAGE and immunoblotted with anti-LRRC50.



Anti-LRRC50 mouse monoclonal antibody (M09808) immunofluorescent staining of COS7 cells transiently transfected by pCMV6-ENTRY LRRC50.

Submit a product review to Biocompare.com

Submit a review of this product to Biocompare.com to receive a \$20 Amazon.com giftcard! Your reviews help your fellow scientists make the right decisions. Thank you for your contribution.



Anti-LRRC50 (DNAAF1) Mouse Monoclonal Antibody [Clone ID: OTI4E4]

For Research Use Only. Not for use in diagnostic procedures.