

Anti-SH3GL3 Antibody (C-term)

Catalog Number: M09836

About SH3GL3

Implicated in endocytosis. May recruit other proteins to membranes with high curvature (By similarity).

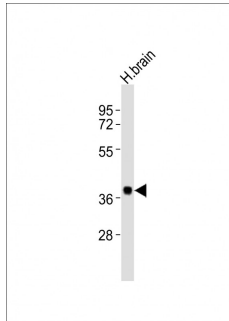
Overview

Product Name	Anti-SH3GL3 Antibody (C-term)
Reactive Species	Human
Description	Boster Bio Anti-SH3GL3 Antibody (C-term) (Catalog # M09836). Tested in WB application(s). This antibody reacts with Human.
Application	WB
Clonality	Polyclonal
Formulation	Purified polyclonal antibody supplied in PBS with 0.09% (W/V) sodium azide.
Storage Instructions	Maintain refrigerated at 2-8°C for up to 2 weeks. For long term storage, store at -20°C in small aliquots to prevent freeze-thaw cycles.
Host	Rabbit
Uniprot ID	Q99963

Technical Details

Immunogen	This SH3GL3 antibody is generated from a rabbit immunized with a KLH conjugated synthetic peptide between 250-282 amino acids from the C-terminal region of human SH3GL3.
Isotype	Rabbit IgG
Purification	This antibody is purified through a protein A column, followed by peptide affinity purification
Suggested Dilutions	Dilute the sample so that the expected range of concentrations fall within the detection range of this kit. If the expected range of concentration is unknown, a pilot test should be conducted to decide the optimal dilution ratio for your samples. Some PubMed article(s) citing the expression level of this target are as follows: For protocols, please visit https://www.bosterbio.com/protocol-and-troubleshooting/

Anti-SH3GL3 Antibody (C-term) (M09836) Images



Anti-SH3GL3 Antibody (C-term) at 1:2000 dilution + human brain lysates
Lysates/proteins at 20 µg per lane.
Secondary
Goat Anti-Rabbit IgG, (H+L), Peroxidase conjugated at 1/10000 dilution
Predicted band size : 39 kDa
Blocking/Dilution buffer: 5% NFDN/TBST.

Submit a product review to Biocompare.com

Submit a review of this product to Biocompare.com to receive a \$20 Amazon.com giftcard! Your reviews help your fellow scientists make the right decisions. Thank you for your contribution.



Anti-SH3GL3 Antibody (C-term)