

## Anti-RAB30 Mouse Monoclonal Antibody [Clone ID: OTI3E7]

Catalog Number: M09855

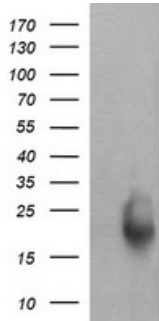
### Overview

Product Name	Anti-RAB30 Mouse Monoclonal Antibody [Clone ID: OTI3E7]
Reactive Species	Dog, Human, Monkey, Mouse, Rat
Description	Boster Bio RAB30 mouse monoclonal antibody, clone OTI3E7 (formerly 3E7). Catalog# M09855. Tested in IF, IHC, WB. This antibody reacts with Human, Monkey, Mouse, Rat, Dog.
Application	IF, IHC, WB
Clonality	Monoclonal OTI3E7
Formulation	PBS (pH 7.3) containing 1% stabilizing protein, 50% glycerol and 0.02% sodium azide. This antibody is supplied in a stabilized formulation. Compatibility with conjugation reactions depends on the chemistry of the conjugation method used. For conjugation methods that are not compatible with the stabilizing components present in this formulation, a carrier-free antibody format is required.
Storage Instructions	Store at -20°C as received.
Host	Mouse
Uniprot ID	Q15771

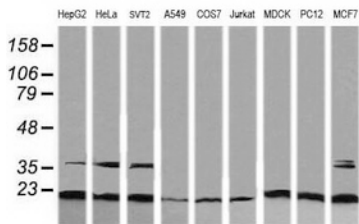
### Technical Details

Immunogen	Full length human recombinant protein of human RAB30 (NP_055303) produced in HEK293T cell.
Isotype	IgG2a
Concentration	1 mg/ml
Purification	Purified from mouse ascites fluids or tissue culture supernatant by affinity chromatography (protein A/G)
Suggested Dilutions	WB 1:200 IHC 1:150 IF 1:100

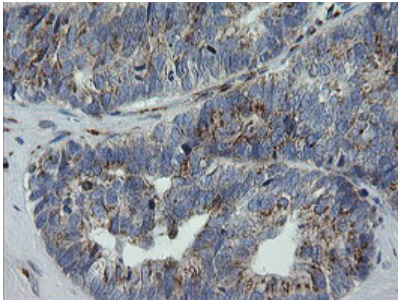
## Anti-RAB30 Mouse Monoclonal Antibody [Clone ID: OTI3E7] (M09855) Images



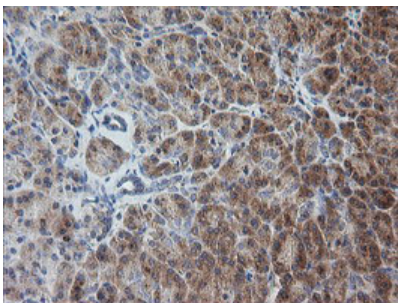
HEK293T cells were transfected with the pCMV6-ENTRY control (Left lane) or pCMV6-ENTRY RAB30 (Right lane) cDNA for 48 hrs and lysed. Equivalent amounts of cell lysates (5 ug per lane) were separated by SDS-PAGE and immunoblotted with anti-RAB30.



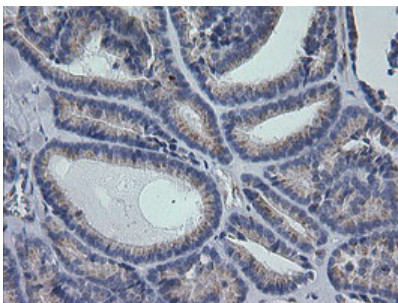
Western blot analysis of extracts (35ug) from 9 different cell lines by using anti-RAB30 monoclonal antibody (HepG2: human; HeLa: human; SVT2: mouse; A549: human; COS7: monkey; Jurkat: human; MDCK: canine; PC12: rat; MCF7: human).



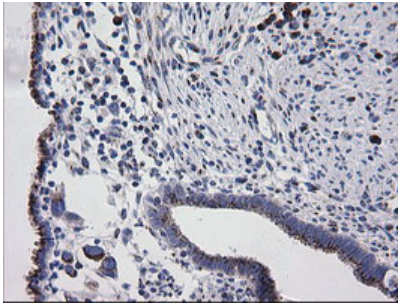
Immunohistochemical staining of paraffin-embedded Adenocarcinoma of Human ovary tissue using anti-RAB30 mouse monoclonal antibody. (Heat-induced epitope retrieval by 10mM citric buffer)



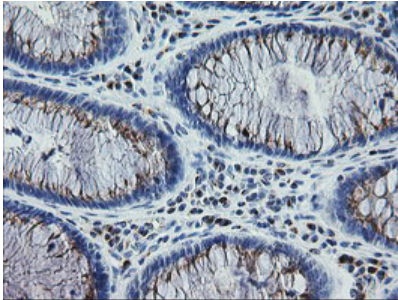
Immunohistochemical staining of paraffin-embedded Human pancreas tissue within the normal limits using anti-RAB30 mouse monoclonal antibody. (Heat-induced epitope retrieval by 10mM citric buffer)



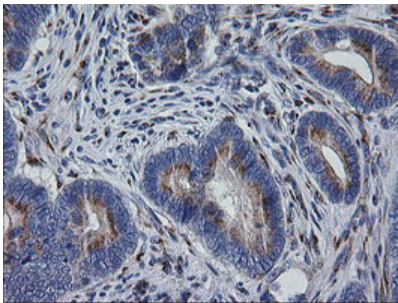
Immunohistochemical staining of paraffin-embedded Carcinoma of Human thyroid tissue using anti-RAB30 mouse monoclonal antibody. (Heat-induced epitope retrieval by 10mM citric buffer)



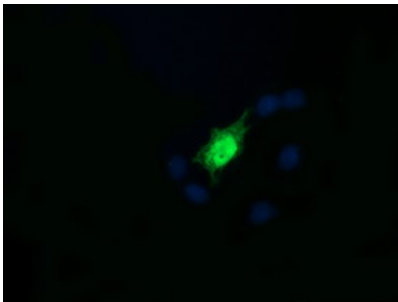
Immunohistochemical staining of paraffin-embedded Human endometrium tissue within the normal limits using anti-RAB30 mouse monoclonal antibody. (Heat-induced epitope retrieval by 10mM citric buffer)



Immunohistochemical staining of paraffin-embedded Human colon tissue within the normal limits using anti-RAB30 mouse monoclonal antibody. (Heat-induced epitope retrieval by 10mM citric buffer)



Immunohistochemical staining of paraffin-embedded Adenocarcinoma of Human colon tissue using anti-RAB30 mouse monoclonal antibody. (Heat-induced epitope retrieval by 10mM citric buffer)



Anti-RAB30 mouse monoclonal antibody (M09855) immunofluorescent staining of COS7 cells transiently transfected by pCMV6-ENTRY RAB30.

**Submit a product review to [Biocompare.com](https://www.biocompare.com)**

Submit a review of this product to [Biocompare.com](https://www.biocompare.com) to receive a \$20 Amazon.com giftcard! Your reviews help your fellow scientists make the right decisions. Thank you for your contribution.



Anti-RAB30 Mouse Monoclonal Antibody [Clone ID: OTI3E7]

For Research Use Only. Not for use in diagnostic procedures.