

Anti-CLEC10A Mouse Monoclonal Antibody [Clone ID: OTI2B10]

Catalog Number: M09933

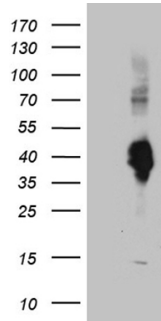
Overview

Product Name	Anti-CLEC10A Mouse Monoclonal Antibody [Clone ID: OTI2B10]
Reactive Species	Human
Description	Boster Bio CLEC10A mouse monoclonal antibody, clone OTI2B10. Catalog# M09933. Tested in IHC, WB. This antibody reacts with Human.
Application	IHC, WB
Clonality	Monoclonal OTI2B10
Formulation	PBS (pH 7.3) containing 1% stabilizing protein, 50% glycerol and 0.02% sodium azide. This antibody is supplied in a stabilized formulation. Compatibility with conjugation reactions depends on the chemistry of the conjugation method used. For conjugation methods that are not compatible with the stabilizing components present in this formulation, a carrier-free antibody format is required.
Storage Instructions	Shipped at -20°C or with ice packs, Upon delivery store at -20°C. Dilute in PBS (pH7.3) if necessary. Stable for 12 months from date of receipt. Avoid repeated freeze-thaws.
Host	Mouse
Uniprot ID	Q8IUN9

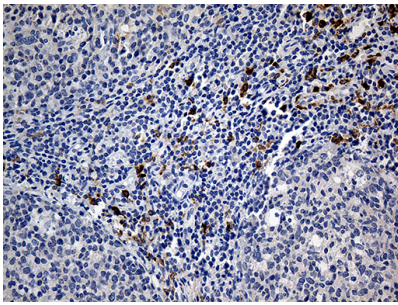
Technical Details

Immunogen	Human recombinant protein fragment corresponding to amino acids 181-293 of human CLEC10A (NP_878910) produced in E.coli.
Isotype	IgG1
Concentration	1 mg/ml
Purification	Purified from mouse ascites fluids or tissue culture supernatant by affinity chromatography (protein A/G)
Suggested Dilutions	WB 1:2000 IHC 1:500

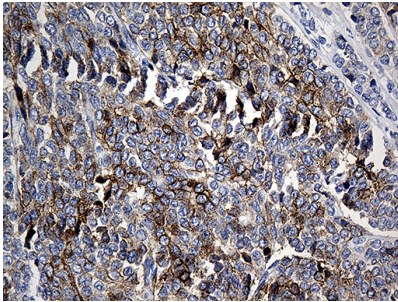
Anti-CLEC10A Mouse Monoclonal Antibody [Clone ID: OTI2B10] (M09933) Images



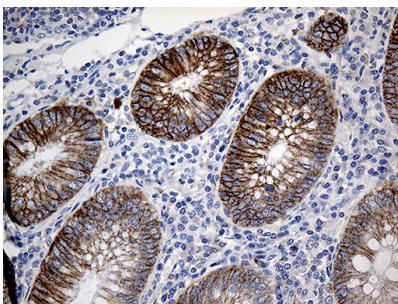
HEK293T cells were transfected with the pCMV6-ENTRY control (Left lane) or pCMV6-ENTRY CLEC10A (Right lane) cDNA for 48 hrs and lysed. Equivalent amounts of cell lysates (5 ug per lane) were separated by SDS-PAGE and immunoblotted with anti-CLEC.



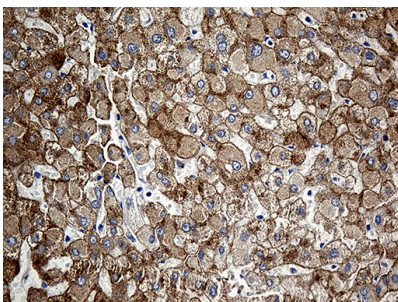
Immunohistochemical staining of paraffin-embedded Human tonsil within the normal limits using anti-CLEC10A mouse monoclonal antibody. (Heat-induced epitope retrieval by 1mM EDTA in 10mM Tris buffer (pH8.5) at 120°C for 3min)



Immunohistochemical staining of paraffin-embedded Adenocarcinoma of Human breast tissue using anti-CLEC10A mouse monoclonal antibody. (Heat-induced epitope retrieval by 1mM EDTA in 10mM Tris buffer (pH8.5) at 120°C for 3min)



Immunohistochemical staining of paraffin-embedded Human appendix tissue within the normal limits using anti-CLEC10A mouse monoclonal antibody. (Heat-induced epitope retrieval by 1mM EDTA in 10mM Tris buffer (pH8.5) at 120°C for 3min)



Immunohistochemical staining of paraffin-embedded Human liver tissue within the normal limits using anti-CLEC10A mouse monoclonal antibody. (Heat-induced epitope retrieval by 1mM EDTA in 10mM Tris buffer (pH8.5) at 120°C for 3min)

Submit a product review to Biocompare.com

Submit a review of this product to Biocompare.com to receive a \$20 Amazon.com giftcard! Your reviews help your fellow scientists make the right decisions. Thank you for your contribution.



Anti-CLEC10A Mouse Monoclonal Antibody [Clone ID: OTI2B10]

For Research Use Only. Not for use in diagnostic procedures.