

Anti-KCTD5 Mouse Monoclonal Antibody [Clone ID: OTI3C8]

Catalog Number: M09979

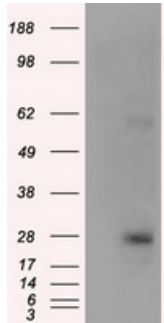
Overview

Product Name	Anti-KCTD5 Mouse Monoclonal Antibody [Clone ID: OTI3C8]
Reactive Species	Human, Mouse, Rat
Description	Boster Bio Anti-KCTD5 mouse monoclonal antibody, clone OTI3C8 (formerly 3C8). Catalog# M09979. Tested in FC, IF, IHC, WB. This antibody reacts with Human, Mouse, Rat.
Application	Flow Cytometry, IF, IHC, WB
Clonality	Monoclonal OTI3C8
Formulation	PBS (pH 7.3) containing 1% stabilizing protein, 50% glycerol and 0.02% sodium azide. This antibody is supplied in a stabilized formulation. Compatibility with conjugation reactions depends on the chemistry of the conjugation method used. For conjugation methods that are not compatible with the stabilizing components present in this formulation, a carrier-free antibody format is required.
Storage Instructions	Store at -20°C as received.
Host	Mouse
Uniprot ID	Q9NXV2

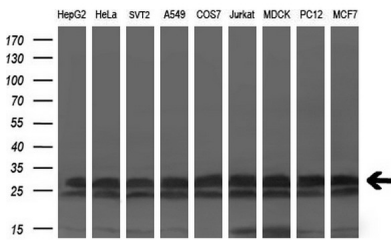
Technical Details

Immunogen	Full length human recombinant protein of human KCTD5 (NP_061865) produced in HEK293T cell.
Isotype	IgG2b
Concentration	1 mg/ml
Purification	Purified from mouse ascites fluids or tissue culture supernatant by affinity chromatography (protein A/G)
Suggested Dilutions	IHC 1:100~400 WB: 1:200

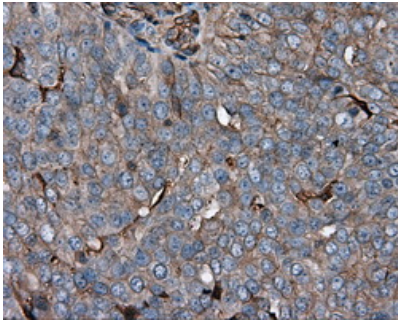
Anti-KCTD5 Mouse Monoclonal Antibody [Clone ID: OTI3C8] (M09979) Images



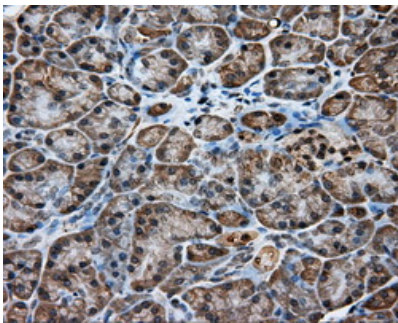
HEK293T cells were transfected with the pCMV6-ENTRY control (Left lane) or pCMV6-ENTRY KCTD5 (Right lane) cDNA for 48 hrs and lysed. Equivalent amounts of cell lysates (5 ug per lane) were separated by SDS-PAGE and immunoblotted with anti-KCTD5.



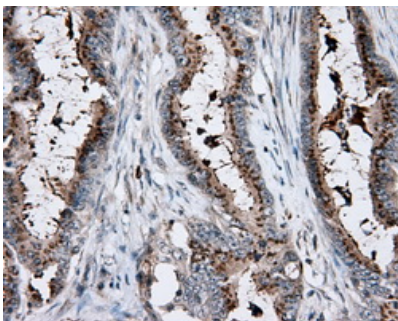
Western blot analysis of extracts (35ug) from 9 different cell lines by using anti-KCTD5 monoclonal antibody (HepG2: human; HeLa: human; SVT2: mouse; A549: human; COS7: monkey; Jurkat: human; MDCK: canine; PC12: rat; MCF7: human) (1:200).



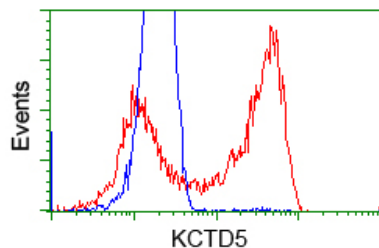
Immunohistochemical staining of paraffin-embedded Adenocarcinoma of ovary tissue using anti-KCTD5 mouse monoclonal antibody. (Heat-induced epitope retrieval by 10mM citric buffer)



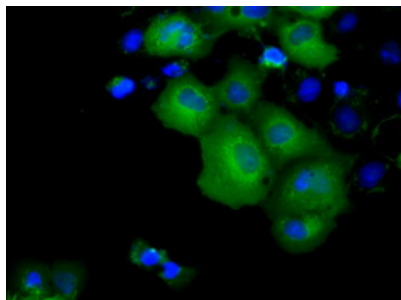
Immunohistochemical staining of paraffin-embedded pancreas tissue within the normal limits using anti-KCTD5 mouse monoclonal antibody. (Heat-induced epitope retrieval by 10mM citric buffer)



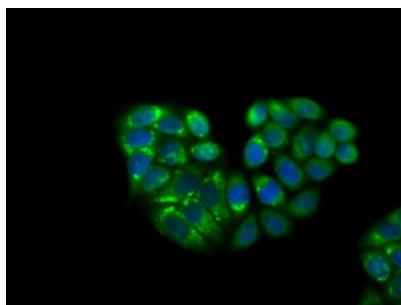
Immunohistochemical staining of paraffin-embedded Adenocarcinoma of colon tissue using anti-KCTD5 mouse monoclonal antibody. (Heat-induced epitope retrieval by 10mM citric buffer)



HEK293T cells transfected with either pCMV6-ENTRY KCTD5 (Red) or empty vector control plasmid (Blue) were immunostained with anti-KCTD5 mouse monoclonal (M09979)



Anti-KCTD5 mouse monoclonal antibody (M09979) immunofluorescent staining of COS7 cells transiently transfected by pCMV6-ENTRY KCTD5.



Immunofluorescent staining of HeLa cells using anti-KCTD5 mouse monoclonal antibody (M09979).

Submit a product review to Biocompare.com

Submit a review of this product to Biocompare.com to receive a \$20 Amazon.com giftcard! Your reviews help your fellow scientists make the right decisions. Thank you for your contribution.



Anti-KCTD5 Mouse Monoclonal Antibody [Clone ID: OTI3C8]

For Research Use Only. Not for use in diagnostic procedures.