

Anti-SCRN1 Mouse Monoclonal Antibody [Clone ID: OTI1F2]

Catalog Number: M10002

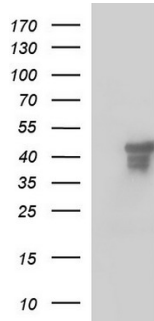
Overview

| | |
|----------------------|--|
| Product Name | Anti-SCRN1 Mouse Monoclonal Antibody [Clone ID: OTI1F2] |
| Reactive Species | Human, Monkey, Mouse, Rat |
| Description | Boster Bio SCRN1 mouse monoclonal antibody, clone OTI1F2 (formerly 1F2). Catalog# M10002. Tested in IHC, WB. This antibody reacts with Human, Monkey, Mouse, Rat. |
| Application | IHC, WB |
| Clonality | Monoclonal OTI1F2 |
| Formulation | PBS (pH 7.3) containing 1% stabilizing protein, 50% glycerol and 0.02% sodium azide. This antibody is supplied in a stabilized formulation. Compatibility with conjugation reactions depends on the chemistry of the conjugation method used. For conjugation methods that are not compatible with the stabilizing components present in this formulation, a carrier-free antibody format is required. |
| Storage Instructions | Store at -20°C as received. |
| Host | Mouse |
| Uniprot ID | Q12765 |

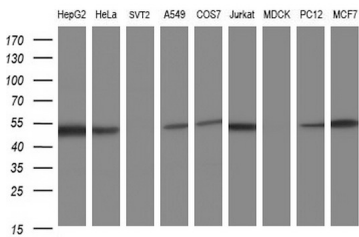
Technical Details

| | |
|---------------------|---|
| Immunogen | Full length human recombinant protein of human SCRN1 (NP_055581) produced in HEK293T cell. |
| Isotype | IgG1 |
| Concentration | 1 mg/ml |
| Purification | Purified from mouse ascites fluids or tissue culture supernatant by affinity chromatography (protein A/G) |
| Suggested Dilutions | WB 1:400~4000 IHC 1:150 |

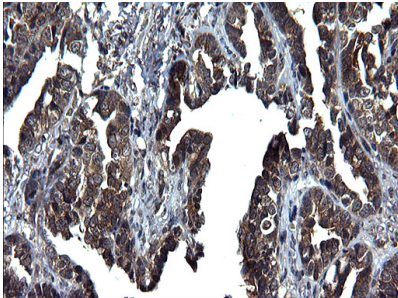
Anti-SCRN1 Mouse Monoclonal Antibody [Clone ID: OTI1F2] (M10002) Images



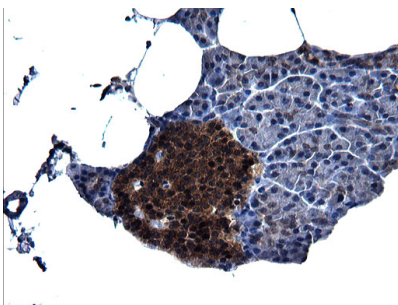
HEK293T cells were transfected with the pCMV6-ENTRY control (Left lane) or pCMV6-ENTRY SCRN1 (Right lane) cDNA for 48 hrs and lysed. Equivalent amounts of cell lysates (5 ug per lane) were separated by SDS-PAGE and immunoblotted with anti-SCRN1.



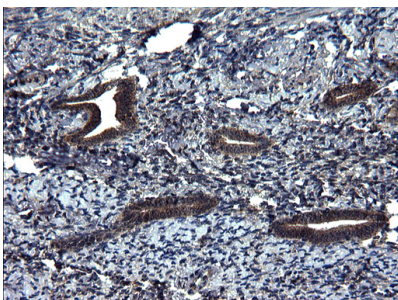
Western blot analysis of extracts (35ug) from 9 different cell lines by using anti-SCRN1 monoclonal antibody (HepG2: human; HeLa: human; SVT2: mouse; A549: human; COS7: monkey; Jurkat: human; MDCK: canine; PC12: rat; MCF7: human).



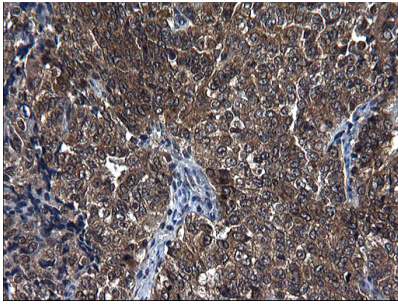
Immunohistochemical staining of paraffin-embedded Adenocarcinoma of Human ovary tissue using anti-SCRN1 mouse monoclonal antibody. (Heat-induced epitope retrieval by 1 mM EDTA in 10mM Tris)



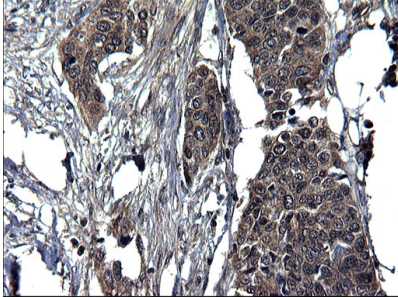
Immunohistochemical staining of paraffin-embedded Human pancreas tissue within the normal limits using anti-SCRN1 mouse monoclonal antibody. (Heat-induced epitope retrieval by 1 mM EDTA in 10mM Tris)



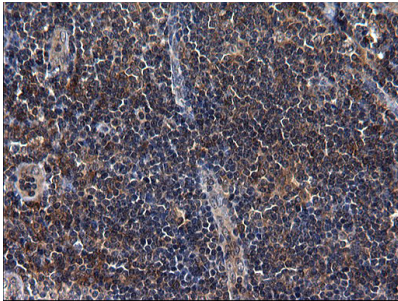
Immunohistochemical staining of paraffin-embedded Human endometrium tissue within the normal limits using anti-SCRN1 mouse monoclonal antibody. (Heat-induced epitope retrieval by 1 mM EDTA in 10mM Tris)



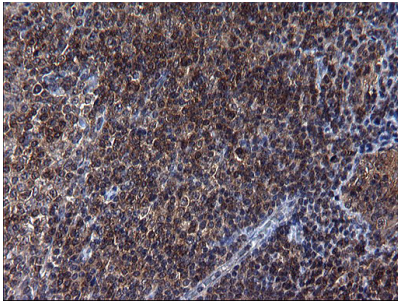
Immunohistochemical staining of paraffin-embedded Adenocarcinoma of Human endometrium tissue using anti-SCRN1 mouse monoclonal antibody. (Heat-induced epitope retrieval by 1 mM EDTA in 10mM Tris)



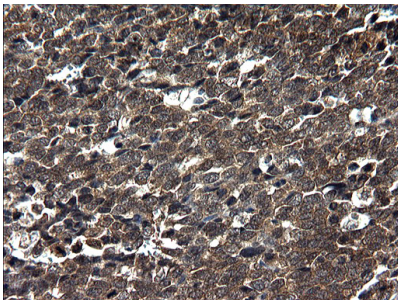
Immunohistochemical staining of paraffin-embedded Carcinoma of Human bladder tissue using anti-SCRN1 mouse monoclonal antibody. (Heat-induced epitope retrieval by 1 mM EDTA in 10mM Tris)



Immunohistochemical staining of paraffin-embedded Human lymph node tissue within the normal limits using anti-SCRN1 mouse monoclonal antibody. (Heat-induced epitope retrieval by 1 mM EDTA in 10mM Tris)

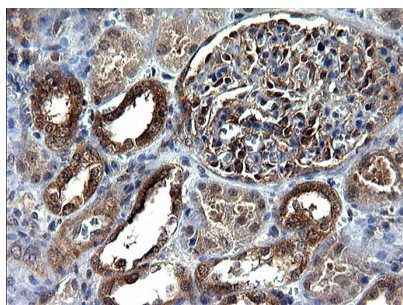


Immunohistochemical staining of paraffin-embedded Human lymphoma tissue using anti-SCRN1 mouse monoclonal antibody. (Heat-induced epitope retrieval by 1 mM EDTA in 10mM Tris)



Immunohistochemical staining of paraffin-embedded Adenocarcinoma of Human colon tissue using anti-SCRN1 mouse monoclonal antibody. (Heat-induced epitope retrieval by 1 mM EDTA in 10mM Tris)

Immunohistochemical staining of paraffin-embedded Human Kidney tissue within the normal limits using anti-SCRN1 mouse monoclonal antibody. (Heat-induced epitope retrieval



by 1 mM EDTA in 10mM Tris

Submit a product review to Biocompare.com

Submit a review of this product to Biocompare.com to receive a \$20 Amazon.com giftcard! Your reviews help your fellow scientists make the right decisions. Thank you for your contribution.



Anti-SCRN1 Mouse Monoclonal Antibody [Clone ID: OTI1F2]

For Research Use Only. Not for use in diagnostic procedures.