

Anti-ASCC1 Mouse Monoclonal Antibody [Clone ID: OTI6G5]

Catalog Number: M10024

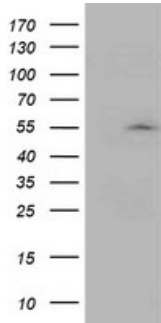
Overview

Product Name	Anti-ASCC1 Mouse Monoclonal Antibody [Clone ID: OTI6G5]
Reactive Species	Human, Mouse, Rat
Description	Boster Bio ASCC1 mouse monoclonal antibody, clone OTI6G5 (formerly 6G5). Catalog# M10024. Tested in FC, IF, IHC, WB. This antibody reacts with Human, Mouse, Rat.
Application	Flow Cytometry, IF, IHC, WB
Clonality	Monoclonal OTI6G5
Formulation	PBS (pH 7.3) containing 1% stabilizing protein, 50% glycerol and 0.02% sodium azide. This antibody is supplied in a stabilized formulation. Compatibility with conjugation reactions depends on the chemistry of the conjugation method used. For conjugation methods that are not compatible with the stabilizing components present in this formulation, a carrier-free antibody format is required.
Storage Instructions	Store at -20°C as received.
Host	Mouse
Uniprot ID	Q8N9N2

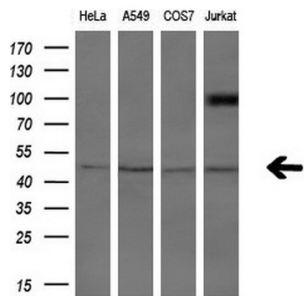
Technical Details

Immunogen	Full length human recombinant protein of human ASCC1 (NP_057031) produced in HEK293T cell.
Isotype	IgG1
Concentration	0.41 mg/ml
Purification	Purified from mouse ascites fluids or tissue culture supernatant by affinity chromatography (protein A/G)
Suggested Dilutions	WB 1:2000 IHC 1:150 IF 1:100 Flow Cytometry 1:100

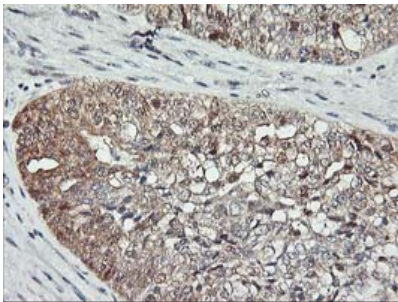
Anti-ASCC1 Mouse Monoclonal Antibody [Clone ID: OTI6G5] (M10024) Images



HEK293T cells were transfected with the pCMV6-ENTRY control (Left lane) or pCMV6-ENTRY ASCC1 (Right lane) cDNA for 48 hrs and lysed. Equivalent amounts of cell lysates (5 ug per lane) were separated by SDS-PAGE and immunoblotted with anti-ASCC1.



Western blot analysis of extracts (10ug) from 4 different cell lines by using anti-ASCC1 monoclonal antibody (1:200).

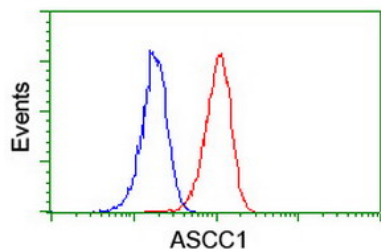
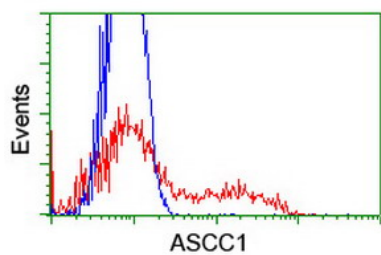


Immunohistochemical staining of paraffin-embedded Adenocarcinoma of Human ovary tissue using anti-ASCC1 mouse monoclonal antibody. (Heat-induced epitope retrieval by 10mM citric buffer)

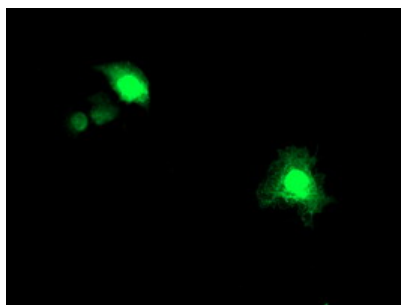


Immunohistochemical staining of paraffin-embedded Human tonsil within the normal limits using anti-ASCC1 mouse monoclonal antibody. (Heat-induced epitope retrieval by 10mM citric buffer)

HEK293T cells transfected with either ASCC1 (Myc-DDK-tagged) overexpress plasmid (Red) or empty vector control plasmid (Blue) were immunostained by anti-ASCC1 antibody (M10024)



Flow cytometric Analysis of Jurkat cells



Anti-ASCC1 mouse monoclonal antibody (M10024) immunofluorescent staining of COS7 cells transiently transfected by pCMV6-ENTRY ASCC1.

Submit a product review to Biocompare.com

Submit a review of this product to Biocompare.com to receive a \$20 Amazon.com giftcard! Your reviews help your fellow scientists make the right decisions. Thank you for your contribution.



Anti-ASCC1 Mouse Monoclonal Antibody [Clone ID: OTI6G5]

For Research Use Only. Not for use in diagnostic procedures.