

Anti-RARRES1 Mouse Monoclonal Antibody [Clone ID: OTI1D2]

Catalog Number: M10039

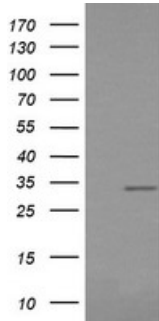
Overview

Product Name	Anti-RARRES1 Mouse Monoclonal Antibody [Clone ID: OTI1D2]
Reactive Species	Human
Description	Boster Bio RARRES1 mouse monoclonal antibody, clone OTI1D2. Catalog# M10039. Tested in IF, IHC, WB. This antibody reacts with Human.
Application	IF, IHC, WB
Clonality	Monoclonal OTI1D2
Formulation	PBS (pH 7.3) containing 1% stabilizing protein, 50% glycerol and 0.02% sodium azide. This antibody is supplied in a stabilized formulation. Compatibility with conjugation reactions depends on the chemistry of the conjugation method used. For conjugation methods that are not compatible with the stabilizing components present in this formulation, a carrier-free antibody format is required.
Storage Instructions	Store at -20°C as received.
Host	Mouse
Uniprot ID	P49788

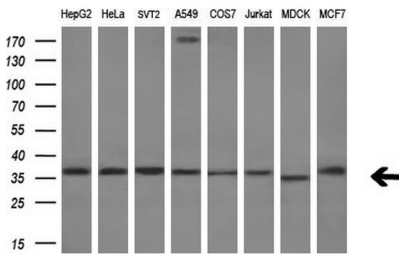
Technical Details

Immunogen	Full length human recombinant protein of human RARRES1 (NP_996846) produced in HEK293T cell.
Isotype	IgG2b
Concentration	1 mg/ml
Purification	Purified from mouse ascites fluids or tissue culture supernatant by affinity chromatography (protein A/G)
Suggested Dilutions	WB 1:4000 IHC 1:150 IF 1:100

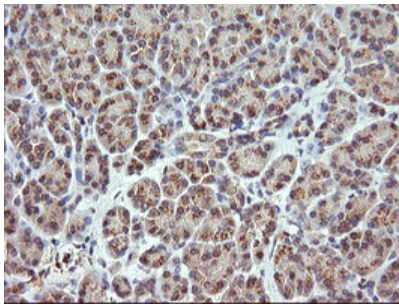
Anti-RARRES1 Mouse Monoclonal Antibody [Clone ID: OTI1D2] (M10039) Images



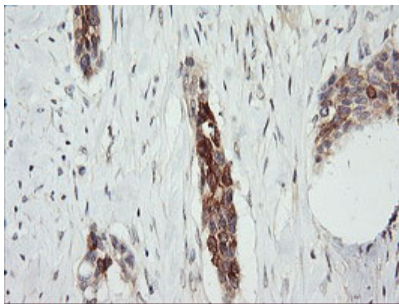
HEK293T cells were transfected with the pCMV6-ENTRY control (Left lane) or pCMV6-ENTRY RARRES1 (Right lane) cDNA for 48 hrs and lysed. Equivalent amounts of cell lysates (5 ug per lane) were separated by SDS-PAGE and immunoblotted with anti-RARRES1.



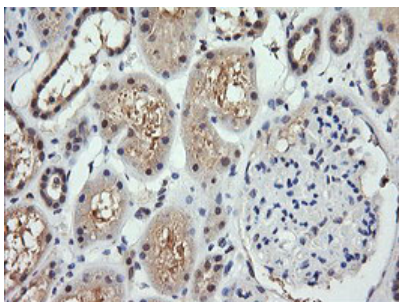
Western blot analysis of extracts (10ug) from 8 different cell lines by using anti-RARRES1 monoclonal antibody (1:200).



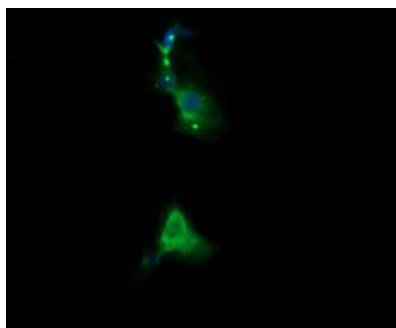
Immunohistochemical staining of paraffin-embedded Human pancreas tissue within the normal limits using anti-RARRES1 mouse monoclonal antibody. (Heat-induced epitope retrieval by 10mM citric buffer)



Immunohistochemical staining of paraffin-embedded Carcinoma of Human bladder tissue using anti-RARRES1 mouse monoclonal antibody. (Heat-induced epitope retrieval by 10mM citric buffer)



Immunohistochemical staining of paraffin-embedded Human Kidney tissue within the normal limits using anti-RARRES1 mouse monoclonal antibody. (Heat-induced epitope retrieval by 10mM citric buffer)



Anti-RARRES1 mouse monoclonal antibody (M10039) immunofluorescent staining of COS7 cells transiently transfected by pCMV6-ENTRY RARRES1.

Submit a product review to [Biocompare.com](https://www.biocompare.com)

Submit a review of this product to [Biocompare.com](https://www.biocompare.com) to receive a \$20 Amazon.com giftcard! Your reviews help your fellow scientists make the right decisions. Thank you for your contribution.



Anti-RARRES1 Mouse Monoclonal Antibody [Clone ID: OTI1D2]

For Research Use Only. Not for use in diagnostic procedures.