

Anti-P2Y6 Rabbit Monoclonal Antibody

Catalog Number: M10087-1

Overview

| | |
|----------------------|--|
| Product Name | Anti-P2Y6 Rabbit Monoclonal Antibody |
| Reactive Species | Human |
| Description | Boster Bio Anti-P2Y6 Rabbit Monoclonal Antibody catalog # M10087-1. Tested in WB, IHC, ICC/IF, IP applications. This antibody reacts with Human. |
| Application | IP, IF, IHC, ICC, WB |
| Clonality | Monoclonal 19P56 |
| Formulation | Rabbit IgG in phosphate buffered saline, pH 7.4, 150mM NaCl, 0.02% sodium azide and 50% glycerol, 0.4-0.5mg/ml BSA. |
| Storage Instructions | Store at -20°C for one year. For short term storage and frequent use, store at 4°C for up to one month. Avoid repeated freeze-thaw cycles. |
| Host | Rabbit |
| Uniprot ID | Q15077 |

Technical Details

| | |
|---------------------|--|
| Immunogen | A synthesized peptide derived from human P2Y6 |
| Isotype | IgG |
| Form | Liquid |
| Concentration | Actual concentration vary by lot. Use suggested dilution ratio to decide dilution procedure. |
| Purification | Affinity-chromatography |
| Suggested Dilutions | WB 1:1000-1:5000 IHC 1:50-1:200 ICC/IF 1:50-1:200 IP 1:50 |

Anti-P2Y6 Rabbit Monoclonal Antibody (M10087-1) Images

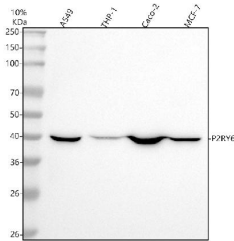


Figure 1. Western blot analysis of P2Y6 using anti-P2Y6 antibody (M10087-1).

Electrophoresis was performed on a 5-20% SDS-PAGE gel at 70V (Stacking gel) / 90V (Resolving gel) for 2-3 hours. The sample well of each lane was loaded with 30 ug of sample under reducing conditions.

Lane 1: human A549 whole cell lysates,
Lane 2: human THP-1 whole cell lysates,
Lane 3: human Caco-2 whole cell lysates,
Lane 4: human MCF-7 whole cell lysates.

After electrophoresis, proteins were transferred to a nitrocellulose membrane at 150 mA for 50-90 minutes. Blocked the membrane with 5% non-fat milk/TBS for 1.5 hour at RT. The membrane was incubated with rabbit anti-P2Y6 antigen affinity purified monoclonal antibody (Catalog # M10087-1) at 1:1000 overnight at 4°C, then washed with TBS-0.1%Tween 3 times with 5 minutes each and probed with a goat anti-rabbit IgG-HRP secondary antibody at a dilution of 1:500 for 1.5 hour at RT. The signal is developed using an Enhanced Chemiluminescent detection (ECL) kit (Catalog # EK1002) with Tanon 5200 system. A specific band was detected for P2Y6 at approximately 40 kDa. The expected band size for P2Y6 is at 36 kDa.

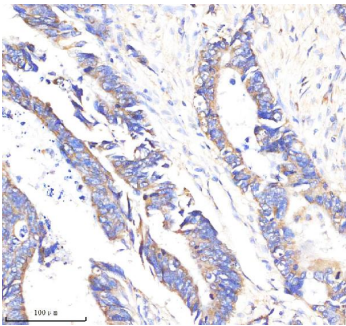


Figure 2. IHC analysis of P2Y6 using anti-P2Y6 antibody (M10087-1).

P2Y6 was detected in a paraffin-embedded section of human colon cancer tissue. Heat mediated antigen retrieval was performed in EDTA buffer (pH 8.0, epitope retrieval solution). The tissue section was blocked with 10% goat serum. The tissue section was then incubated with 1:50 rabbit anti-P2Y6 Antibody (M10087-1) overnight at 4°C. Peroxidase Conjugated Goat Anti-rabbit IgG was used as secondary antibody and incubated for 30 minutes at 37°C. The tissue section was developed using HRP Conjugated Rabbit IgG Super Vision Assay Kit (Catalog # SV0002) with DAB as the chromogen.

Submit a product review to [Biocompare.com](https://www.biocompare.com)

Submit a review of this product to [Biocompare.com](https://www.biocompare.com) to receive a \$20 Amazon.com giftcard! Your reviews help your fellow scientists make the right decisions. Thank you for your contribution.



Anti-P2Y6 Rabbit Monoclonal Antibody