

Anti-ENDOGL1 / ENGL Rabbit Monoclonal Antibody

Catalog Number: M10155

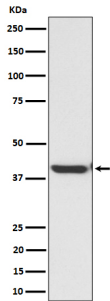
Overview

Product Name	Anti-ENDOGL1 / ENGL Rabbit Monoclonal Antibody
Reactive Species	Human
Description	Boster Bio Anti-ENDOGL1 / ENGL Rabbit Monoclonal Antibody catalog # M10155. Tested in WB, IP applications. This antibody reacts with Human.
Application	IP, WB
Clonality	Monoclonal 28E53
Formulation	Rabbit IgG in stabilizing components, phosphate buffered saline, pH 7.4, 150mM NaCl, 0.02% sodium azide and 50% glycerol. *This antibody is supplied in a stabilized formulation. Compatibility with conjugation reactions depends on the chemistry of the conjugation method used. For conjugation methods that are not compatible with the stabilizing components present in this formulation, a carrier-free antibody format is required.
Storage Instructions	Store at -20°C for one year. For short term storage and frequent use, store at 4°C for up to one month. Avoid repeated freeze-thaw cycles.
Host	Rabbit
Uniprot ID	Q9Y2C4

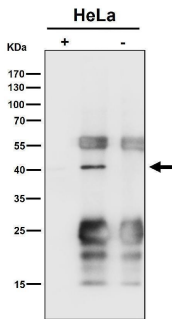
Technical Details

Immunogen	A synthesized peptide derived from human ENDOGL1 / ENGL
Isotype	IgG
Form	Liquid
Concentration	0.5mg/ml
Purification	Affinity-chromatography
Suggested Dilutions	WB 1:500-2000 IP 1:50

Anti-ENDOGL1 / ENGL Rabbit Monoclonal Antibody (M10155) Images



Western blot analysis of ENDOGL1 / ENGL expression in HepG2 cell lysate.



Immunoprecipitate (IP) analysis using the Antibody at 1:50 dilution. (wb at 1:1K dilution)

Submit a product review to [Biocompare.com](https://www.biocompare.com)

Submit a review of this product to [Biocompare.com](https://www.biocompare.com) to receive a \$20 Amazon.com giftcard! Your reviews help your fellow scientists make the right decisions. Thank you for your contribution.



Anti-ENDOGL1 / ENGL Rabbit Monoclonal Antibody

For Research Use Only. Not for use in diagnostic procedures.