

Anti-RAB37 Mouse Monoclonal Antibody [Clone ID: OTI2F1]

Catalog Number: M10452

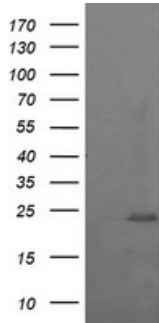
Overview

Product Name	Anti-RAB37 Mouse Monoclonal Antibody [Clone ID: OTI2F1]
Reactive Species	Human, Mouse, Rat
Description	Boster Bio RAB37 mouse monoclonal antibody, clone OTI2F1 (formerly 2F1). Catalog# M10452. Tested in IF, IHC, WB. This antibody reacts with Human, Mouse, Rat.
Application	IF, IHC, WB
Clonality	Monoclonal OTI2F1
Formulation	PBS (pH 7.3) containing 1% stabilizing protein, 50% glycerol and 0.02% sodium azide. This antibody is supplied in a stabilized formulation. Compatibility with conjugation reactions depends on the chemistry of the conjugation method used. For conjugation methods that are not compatible with the stabilizing components present in this formulation, a carrier-free antibody format is required.
Storage Instructions	Store at -20°C as received.
Host	Mouse
Uniprot ID	Q96AX2

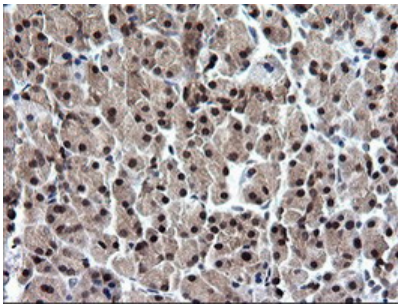
Technical Details

Immunogen	Full length human recombinant protein of human RAB37 (NP_783865) produced in HEK293T cell.
Isotype	IgG2a
Concentration	1 mg/ml
Purification	Purified from mouse ascites fluids or tissue culture supernatant by affinity chromatography (protein A/G)
Suggested Dilutions	WB 1:2000 IHC 1:150 IF 1:100

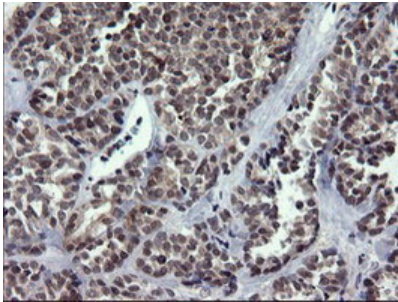
Anti-RAB37 Mouse Monoclonal Antibody [Clone ID: OTI2F1] (M10452) Images



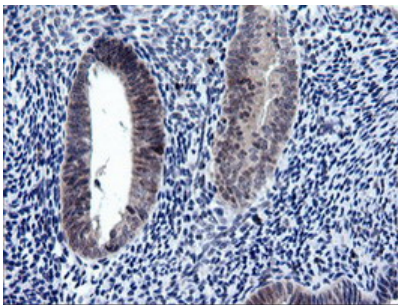
HEK293T cells were transfected with the pCMV6-ENTRY control (Left lane) or pCMV6-ENTRY RAB37 (Right lane) cDNA for 48 hrs and lysed. Equivalent amounts of cell lysates (5 ug per lane) were separated by SDS-PAGE and immunoblotted with anti-RAB37.



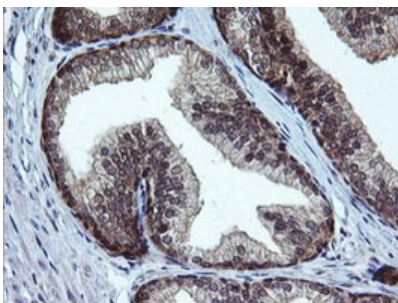
Immunohistochemical staining of paraffin-embedded Human pancreas tissue within the normal limits using anti-RAB37 mouse monoclonal antibody. (Heat-induced epitope retrieval by 10mM citric buffer)



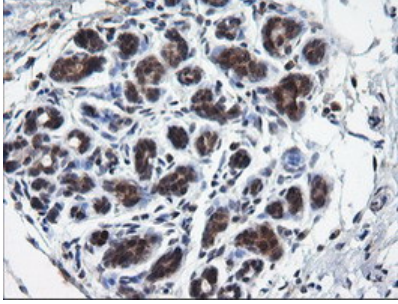
Immunohistochemical staining of paraffin-embedded Carcinoma of Human thyroid tissue using anti-RAB37 mouse monoclonal antibody. (Heat-induced epitope retrieval by 10mM citric buffer)



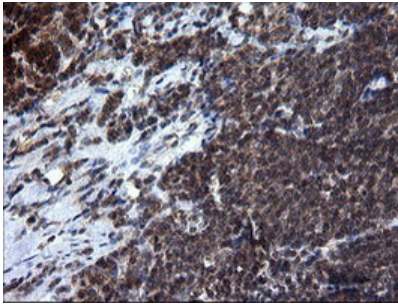
Immunohistochemical staining of paraffin-embedded Human endometrium tissue within the normal limits using anti-RAB37 mouse monoclonal antibody. (Heat-induced epitope retrieval by 10mM citric buffer)



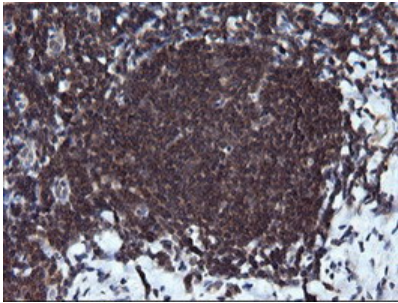
Immunohistochemical staining of paraffin-embedded Human prostate tissue within the normal limits using anti-RAB37 mouse monoclonal antibody. (Heat-induced epitope retrieval by 10mM citric buffer)



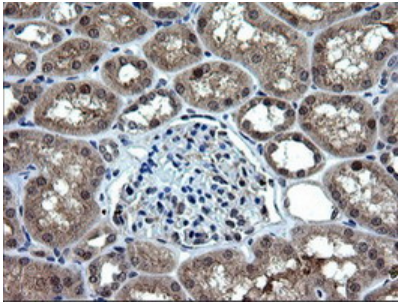
Immunohistochemical staining of paraffin-embedded Human breast tissue within the normal limits using anti-RAB37 mouse monoclonal antibody. (Heat-induced epitope retrieval by 10mM citric buffer)



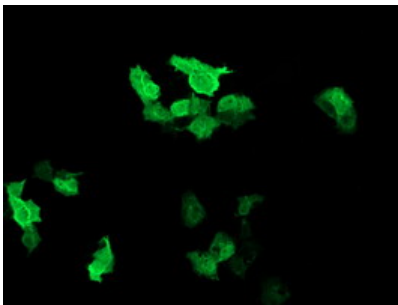
Immunohistochemical staining of paraffin-embedded Human lymphoma tissue using anti-RAB37 mouse monoclonal antibody. (Heat-induced epitope retrieval by 10mM citric buffer)



Immunohistochemical staining of paraffin-embedded Human tonsil within the normal limits using anti-RAB37 mouse monoclonal antibody. (Heat-induced epitope retrieval by 10mM citric buffer)



Immunohistochemical staining of paraffin-embedded Human Kidney tissue within the normal limits using anti-RAB37 mouse monoclonal antibody. (Heat-induced epitope retrieval by 10mM citric buffer)



Anti-RAB37 mouse monoclonal antibody (M10452) immunofluorescent staining of COS7 cells transiently transfected by pCMV6-ENTRY RAB37.

Submit a review of this product to Biocompare.com to receive a \$20 Amazon.com giftcard! Your reviews help your fellow scientists make the right decisions. Thank you for your contribution.



Anti-RAB37 Mouse Monoclonal Antibody [Clone ID: OTI2F1]

For Research Use Only. Not for use in diagnostic procedures.