

Anti-GDE1 Antibody

Catalog Number: M10470

About GDE1

Has glycerophosphoinositol phosphodiesterase activity. Has little or no activity towards glycerophosphocholine. GDE1 activity can be modulated by G-protein signaling pathways (By similarity).

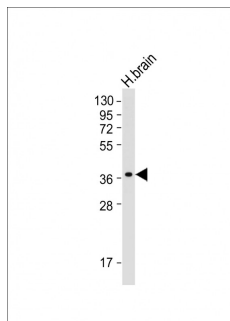
Overview

Product Name	Anti-GDE1 Antibody
Reactive Species	Human
Description	Boster Bio Anti-GDE1 Antibody (Catalog # M10470). Tested in WB application(s). This antibody reacts with Human.
Application	WB
Clonality	Monoclonal 2021CT823.61.7
Formulation	Purified monoclonal antibody supplied in PBS with 0.09% (W/V) sodium azide.
Storage Instructions	Maintain refrigerated at 2-8°C for up to 2 weeks. For long-term storage, store at -20°C in small aliquots to prevent freeze-thaw cycles.
Host	Mouse
Uniprot ID	Q9NZC3

Technical Details

Immunogen	This GDE1 antibody is generated from a mouse immunized with a recombinant protein from the human region of human GDE1.
Predicted Reactive Species	Human
Isotype	IgG1,kappa
Purification	This antibody is purified through a protein G column, followed by dialysis against PBS.
Suggested Dilutions	WB: 1:2000

Anti-GDE1 Antibody (M10470) Images



Anti-GDE1 Antibody at 1:2000 dilution + human brain tissue lysateLysates/proteins at 20 µg per lane. SecondaryGoat Anti-mouse IgG, (H+L), Peroxidase conjugated at 1/10000 dilution. Predicted band size : 38 kDaBlocking/Dilution buffer: 5% NFDM/TBST.

Submit a product review to Biocompare.com

Submit a review of this product to Biocompare.com to receive a \$20 Amazon.com giftcard! Your reviews help your fellow scientists make the right decisions. Thank you for your contribution.



Anti-GDE1 Antibody

For Research Use Only. Not for use in diagnostic procedures.