

Anti-IBRDC2 (RNF144B) Mouse Monoclonal Antibody [Clone ID: OTI9H10]

Catalog Number: M10490

Overview

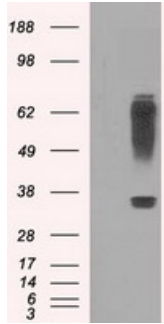
Product Name	Anti-IBRDC2 (RNF144B) Mouse Monoclonal Antibody [Clone ID: OTI9H10]
Reactive Species	Human, Mouse, Rat
Description	Boster Bio RNF144B (IBRDC2) mouse monoclonal antibody, clone OTI9H10 (formerly 9H10). Catalog# M10490. Tested in FC, IF, IHC, WB. This antibody reacts with Human, Mouse, Rat.
Application	Flow Cytometry, IF, IHC, WB
Clonality	Monoclonal OTI9H10
Formulation	PBS (pH 7.3) containing 1% BSA, 50% glycerol and 0.02% sodium azide.
Storage Instructions	Store at -20°C as received.
Host	Mouse
Uniprot ID	Q7Z419

Technical Details

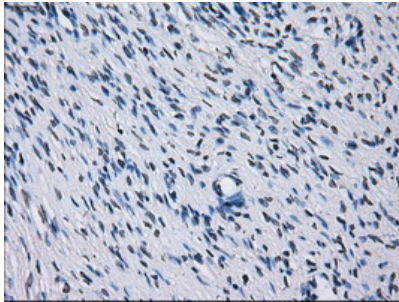
Immunogen	Human recombinant protein fragment corresponding to amino acids 1-256 of human RNF144B (NP_877434) produced in E. coli.
Isotype	IgG2b
Concentration	0.8 mg/ml
Purification	Purified from mouse ascites fluids or tissue culture supernatant by affinity chromatography (protein A/G)
Suggested Dilutions	Dilute the sample so that the expected range of concentrations fall within the detection range of this kit. If the expected range of concentration is unknown, a pilot test should be conducted to decide the optimal dilution ratio for your samples. Some PubMed article(s) citing the expression level of this target are as follows:

Anti-IBRDC2 (RNF144B) Mouse Monoclonal Antibody [Clone ID: OTI9H10] (M10490)

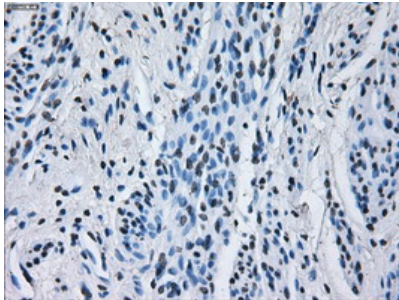
Images



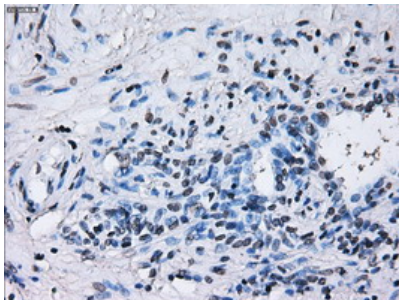
HEK293T cells were transfected with the pCMV6-ENTRY control (Left lane) or pCMV6-ENTRY RNF144B (Right lane) cDNA for 48 hrs and lysed. Equivalent amounts of cell lysates (5 ug per lane) were separated by SDS-PAGE and immunoblotted with anti-RNF144B.



Immunohistochemical staining of paraffin-embedded Human Ovary tissue within the normal limits using anti-RNF144B mouse monoclonal antibody. (Heat-induced epitope retrieval by 10mM citric buffer)

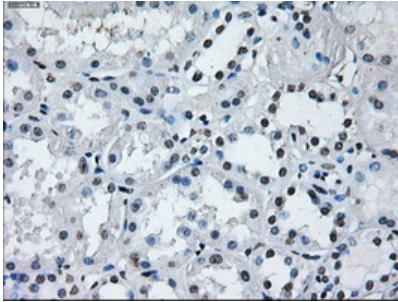
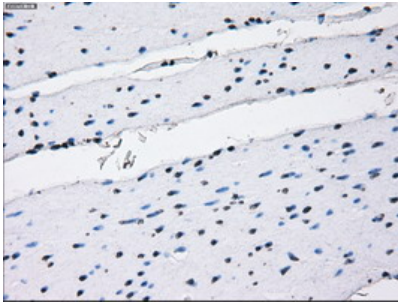


Immunohistochemical staining of paraffin-embedded Human endometrium tissue within the normal limits using anti-RNF144B mouse monoclonal antibody. (Heat-induced epitope retrieval by 10mM citric buffer)

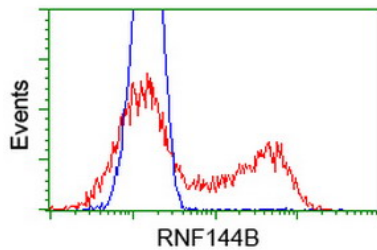


Immunohistochemical staining of paraffin-embedded Human prostate tissue within the normal limits using anti-RNF144B mouse monoclonal antibody. (Heat-induced epitope retrieval by 10mM citric buffer)

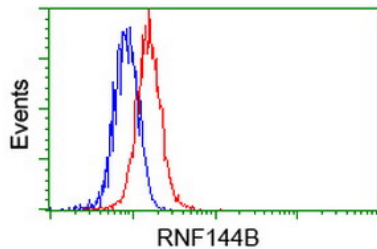
Immunohistochemical staining of paraffin-embedded Human colon tissue within the normal limits using anti-RNF144B mouse monoclonal antibody. (Heat-induced epitope retrieval by 10mM citric buffer)



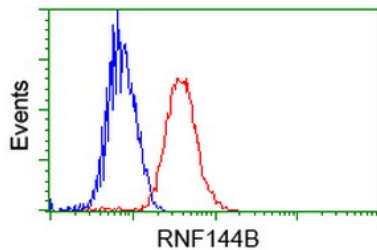
Immunohistochemical staining of paraffin-embedded Human Kidney tissue within the normal limits using anti-RNF144B mouse monoclonal antibody. (Heat-induced epitope retrieval by 10mM citric buffer)



HEK293T cells transfected with either RNF144B (Myc-DDK-tagged) overexpress plasmid (Red) or empty vector control plasmid (Blue) were immunostained by anti-RNF144B antibody (M10490)

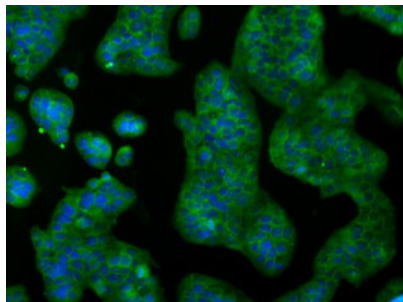
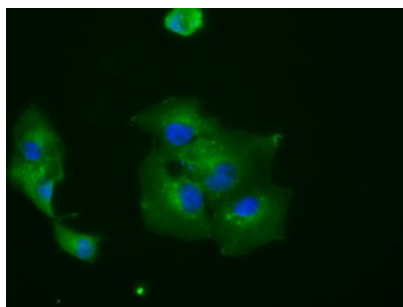


Flow cytometric Analysis of Hela cells



Flow cytometric Analysis of Jurkat cells

Anti-RNF144B mouse monoclonal antibody (M10490) immunofluorescent staining of COS7 cells transiently transfected by pCMV6-ENTRY RNF144B.



Immunofluorescent staining of HeLa cells using anti-RNF144B mouse monoclonal antibody (M10490).

Submit a product review to Biocompare.com

Submit a review of this product to Biocompare.com to receive a \$20 Amazon.com giftcard! Your reviews help your fellow scientists make the right decisions. Thank you for your contribution.



Anti-IBRDC2 (RNF144B) Mouse Monoclonal Antibody [Clone ID: OTI9H10]