

Anti-ROPN1 Antibody (Center)

Catalog Number: M10524

About ROPN1

Has glycerophosphoinositol phosphodiesterase activity. Has little or no activity towards glycerophosphocholine. GDE1 activity can be modulated by G-protein signaling pathways (By similarity).

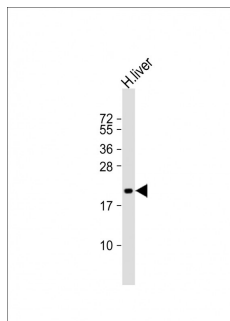
Overview

Product Name	Anti-ROPN1 Antibody (Center)
Reactive Species	Human
Description	Boster Bio Anti-ROPN1 Antibody (Center) (Catalog # M10524). Tested in WB application(s). This antibody reacts with Human.
Application	WB
Clonality	Polyclonal
Formulation	Purified polyclonal antibody supplied in PBS with 0.09% (W/V) sodium azide.
Storage Instructions	Maintain refrigerated at 2-8°C for up to 2 weeks. For long-term storage, store at -20°C in small aliquots to prevent freeze-thaw cycles.
Host	Rabbit
Uniprot ID	Q9HAT0

Technical Details

Immunogen	This ROPN1 antibody is generated from a rabbit immunized with a KLH conjugated synthetic peptide between 91-121 amino acids from the Central region of human ROPN1.
Predicted Reactive Species	Human
Isotype	Rabbit IgG
Purification	This antibody is purified through a protein A column, followed by peptide affinity purification.
Suggested Dilutions	WB: 1:2000

Anti-ROPN1 Antibody (Center) (M10524) Images



Anti-ROPN1 Antibody (Center) at 1:2000 dilution + human liver lysate. Lysates/proteins at 20 µg per lane. Secondary Goat Anti-Rabbit IgG, (H+L), Peroxidase conjugated at 1/10000 dilution. Predicted band size : 24 kDa. Blocking/Dilution buffer: 5% NFD/MTBST.

Submit a product review to Biocompare.com

Submit a review of this product to Biocompare.com to receive a \$20 Amazon.com giftcard! Your reviews help your fellow scientists make the right decisions. Thank you for your contribution.



Anti-ROPN1 Antibody (Center)

For Research Use Only. Not for use in diagnostic procedures.