

Anti-Human IgE IGHE Rabbit Monoclonal Antibody, Clone#RM122

Catalog Number: M10533

Overview

Product Name	Anti-Human IgE IGHE Rabbit Monoclonal Antibody, Clone#RM122
Reactive Species	Human
Description	Boster Bio Anti-Human IgE IGHE Rabbit Monoclonal Antibody, Clone#RM122 (Catalog # M10533). Tested in ELISA applications. This antibody reacts with Human.
Application	ELISA
Clonality	Monoclonal RM122
Formulation	50% Glycerol/PBS with 1% BSA and 0.09% sodium azide
Storage Instructions	Store at -20°C for one year. Avoid repeated freeze-thaw cycles.
Host	Rabbit
Uniprot ID	P01854

Technical Details

Immunogen	Human IgE
Cross Reactivity	This antibody reacts to human IgE. No cross-reactivity with human IgG, IgM, IgD, or IgA.
Isotype	Rabbit IgG
Form	Liquid
Concentration	1 mg/mL
Purification	Protein A affinity purified from an animal origin-free culture supernatant
Suggested Dilutions	<p>Dilute the sample so that the expected range of concentrations fall within the detection range of this kit.</p> <p>If the expected range of concentration is unknown, a pilot test should be conducted to decide the optimal dilution ratio for your samples.</p> <p>Some PubMed article(s) citing the expression level of this target are as follows:</p> <p>Boster Bio's internal QC testing used:</p> <p>ELISA: 10ng/well – 100ng/well (for Capture)</p> <p>0.01ug/mL – 0.1ug/mL (for Detection)</p>

Anti-Human IgE IGHE Rabbit Monoclonal Antibody, Clone#RM122 (M10533) Images

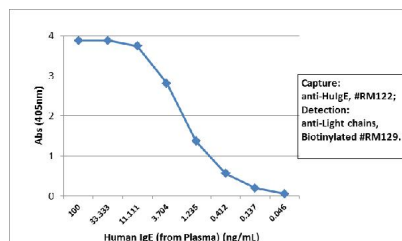


Figure 1. ELISA result showing specificity Sandwich ELISA using RM122 as the capture antibody (25ng/well), and Biotinylated anti-human light chains (+) antibody RM129 as the detection antibody, followed by an alkaline phosphatase conjugated streptavidin.

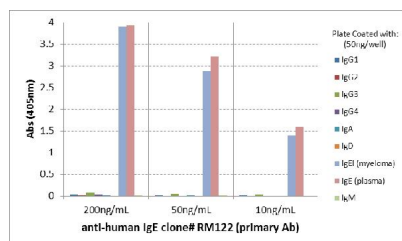


Figure 2. ELISA result showing specificity ELISA of human immunoglobulins shows RM122 reacted to the IgE from human myeloma plasma and the IgE from human plasma. No cross reactivity with human IgG, IgM, IgD, or IgA. The plate was coated with 50 ng/well of different immunoglobulins. 200 ng/mL, 50ng/mL, or 10 ng/mL of RM122 was used as the primary antibody. An alkaline phosphatase conjugated anti-rabbit IgG as the secondary antibody.

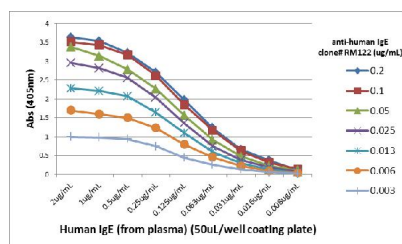


Figure 3. ELISA result showing specificity A titer ELISA using RM122. The plate was coated with different amounts of human IgE (from plasma). A serial dilution of RM122 was used as the primary antibody. An alkaline phosphatase conjugated anti-rabbit IgG as the secondary antibody.

1 Publications Citing This Product

1. PubMed ID: 21571740, Epitope mapping and identification on a 3D model built for the tartary buckwheat allergic protein TBb

Visit bosterbio.com/anti-human-ige-rabbit-monoclonal-antibody-clone-rm122-m10533-boster.html to see all 1 publications.

Submit a product review to Biocompare.com

Submit a review of this product to Biocompare.com to receive a \$20 Amazon.com giftcard! Your reviews help your fellow scientists make the right decisions. Thank you for your contribution.



Anti-Human IgE IGHE Rabbit Monoclonal Antibody, Clone#RM122