

Anti-PARP16 Mouse Monoclonal Antibody [Clone ID: OTI2C8]

Catalog Number: M10545

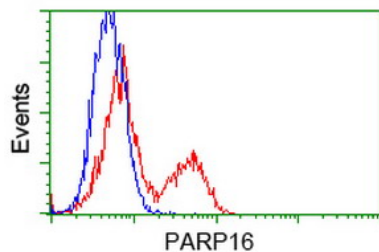
Overview

Product Name	Anti-PARP16 Mouse Monoclonal Antibody [Clone ID: OTI2C8]
Reactive Species	Human, Mouse, Rat
Description	Boster Bio Anti-PARP16 mouse monoclonal antibody, clone OTI2C8 (formerly 2C8). Catalog# M10545. Tested in FC. This antibody reacts with Human, Mouse, Rat.
Application	Flow Cytometry
Clonality	Monoclonal OTI2C8
Formulation	PBS (pH 7.3) containing 1% stabilizing protein, 50% glycerol and 0.02% sodium azide. This antibody is supplied in a stabilized formulation. Compatibility with conjugation reactions depends on the chemistry of the conjugation method used. For conjugation methods that are not compatible with the stabilizing components present in this formulation, a carrier-free antibody format is required.
Storage Instructions	Store at -20°C as received.
Host	Mouse
Uniprot ID	Q8N5Y8

Technical Details

Immunogen	Full-length protein expressed in 293T cell transfected with human PARP16 expression vector .
Isotype	IgG1
Concentration	0.45 mg/ml
Purification	Purified from mouse ascites fluids or tissue culture supernatant by affinity chromatography (protein A/G)
Suggested Dilutions	Flow Cytometry 1:100

Anti-PARP16 Mouse Monoclonal Antibody [Clone ID: OT12C8] (M10545) Images



HEK293T cells transfected with either PARP16 (Myc-DDK-tagged) overexpress plasmid (Red) or empty vector control plasmid (Blue) were immunostained by anti-PARP16 antibody (M10545)

Submit a product review to [Biocompare.com](https://www.biocompare.com)

Submit a review of this product to [Biocompare.com](https://www.biocompare.com) to receive a \$20 Amazon.com giftcard! Your reviews help your fellow scientists make the right decisions. Thank you for your contribution.



Anti-PARP16 Mouse Monoclonal Antibody [Clone ID: OT12C8]

For Research Use Only. Not for use in diagnostic procedures.