

Anti-gamma-Tubulin GCP2 Purified TUBGCP2 Monoclonal Antibody

Catalog Number: M10573

About TUBGCP2

Gamma tubulin complex component 2 (GCP2) is 95-103 kDa protein which associates with two molecules of gamma tubulin and one molecule of gamma tubulin complex component 3 (GCP3), to form the gamma tubulin small complexes (gammaTuSCs). These complexes interact with GCP4, 5, and 6 to form the gamma tubulin ring complexes (gammaTuRCs), which are embedded in the microtubule organizing center matrix where they nucleate microtubules. The gammaTuRCs are also involved in the regulation of microtubule plus and minus end dynamics. Components of gamma tubulin complexes are highly conservative in eukaryotes.

Overview

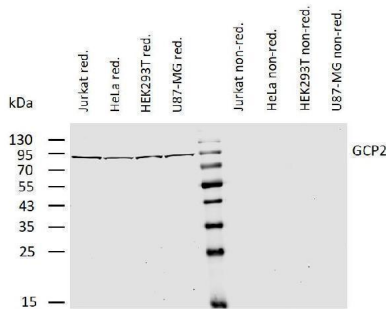
Product Name	Anti-gamma-Tubulin GCP2 Purified TUBGCP2 Monoclonal Antibody
Reactive Species	Human, Mouse, Pig, Rat
Description	Boster Bio Anti-gamma-Tubulin GCP2 Purified TUBGCP2 Monoclonal Antibody (Catalog# M10573). Tested in IP, WB, IHC-P, ICC application(s). This antibody reacts with Rat, Mouse, Pig, Human.
Application	IP, IHC-P, ICC, WB
Clonality	Monoclonal GCP2-01
Formulation	Phosphate buffered saline (PBS), pH 7.4, 15 mM sodium azide
Storage Instructions	Store at 2-8°C. Do not freeze.
Host	Mouse
Uniprot ID	Q9BSJ2

Technical Details

Immunogen	GST-fusion protein containing amino acids 2-194 of mouse GCP2. The mouse monoclonal antibody GCP2-01 recognizes gamma-tubulin complex component 2 (GCP2), a 95-103 kDa intracellular protein. It recognizes also phosphorylated GCP2.
Predicted Reactive Species	Primate
Cross Reactivity	As in case with other anti-CD170 antibodies, this antibody cross-reacts with Siglec-14, whose first two Ig domains are almost identical to those of CD170.
Isotype	Mouse IgG2b kappa
Form	Liquid
Concentration	1 mg/ml

Purification	Purified by protein-A affinity chromatography.
Suggested Dilutions	Western blotting: 1-2 ug/ml, reducing conditions.

Anti-gamma-Tubulin GCP2 Purified TUBGCP2 Monoclonal Antibody (M10573) Images



Western blotting analysis of human gamma-tubulin complex component 2 (GCP2) using mouse monoclonal antibody GCP2-01 on lysates of various cell lines under reducing and non-reducing conditions. Nitrocellulose membrane was probed with 2 μ g/ml of mouse anti-GCP2 monoclonal antibody followed by IRDye800-conjugated anti-mouse secondary antibody. A specific band was detected for GCP2 at approximately 95 kDa.

Submit a product review to Biocompare.com

Submit a review of this product to Biocompare.com to receive a \$20 Amazon.com giftcard! Your reviews help your fellow scientists make the right decisions. Thank you for your contribution.



Anti-gamma-Tubulin GCP2 Purified TUBGCP2 Monoclonal Antibody

For Research Use Only. Not for use in diagnostic procedures.