

Anti-TLE2 Mouse Monoclonal Antibody [Clone ID: OTI5A6]

Catalog Number: M10582

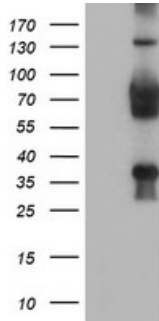
Overview

Product Name	Anti-TLE2 Mouse Monoclonal Antibody [Clone ID: OTI5A6]
Reactive Species	Human, Mouse, Rat
Description	Boster Bio TLE2 mouse monoclonal antibody, clone OTI5A6 (formerly 5A6). Catalog# M10582. Tested in FC, IF, IHC, WB. This antibody reacts with Human, Mouse, Rat.
Application	Flow Cytometry, IF, IHC, WB
Clonality	Monoclonal OTI5A6
Formulation	PBS (pH 7.3) containing 1% stabilizing protein, 50% glycerol and 0.02% sodium azide. This antibody is supplied in a stabilized formulation. Compatibility with conjugation reactions depends on the chemistry of the conjugation method used. For conjugation methods that are not compatible with the stabilizing components present in this formulation, a carrier-free antibody format is required.
Storage Instructions	Store at -20°C as received.
Host	Mouse
Uniprot ID	Q04725

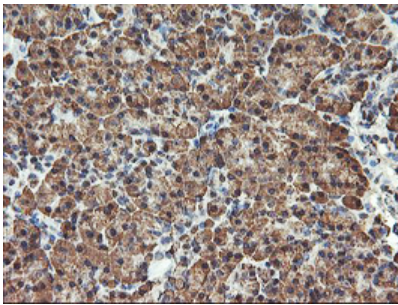
Technical Details

Immunogen	Full length human recombinant protein of human TLE2 (NP_003251) produced in HEK293T cell.
Isotype	IgG1
Concentration	0.85 mg/ml
Purification	Purified from mouse ascites fluids or tissue culture supernatant by affinity chromatography (protein A/G)
Suggested Dilutions	WB: 1:2000 IHC: 1:50 IF: 1:100 Flow cytometry: 1:100

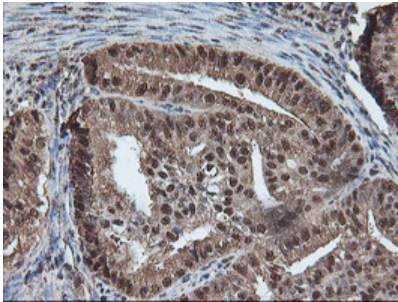
Anti-TLE2 Mouse Monoclonal Antibody [Clone ID: OTI5A6] (M10582) Images



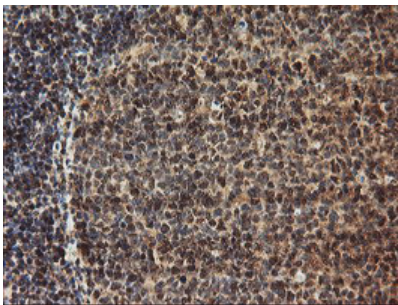
HEK293T cells were transfected with the pCMV6-ENTRY control (Left lane) or pCMV6-ENTRY TLE2 (Right lane) cDNA for 48 hrs and lysed. Equivalent amounts of cell lysates (5 ug per lane) were separated by SDS-PAGE and immunoblotted with anti-TLE2.



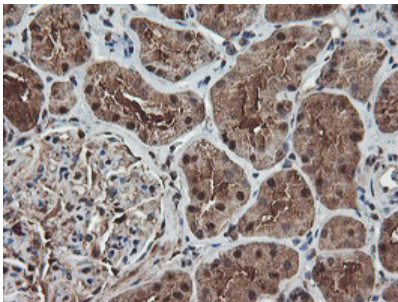
Immunohistochemical staining of paraffin-embedded Human pancreas tissue within the normal limits using anti-TLE2 mouse monoclonal antibody. (M10582)



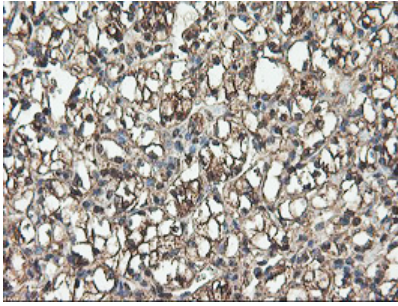
Immunohistochemical staining of paraffin-embedded Adenocarcinoma of Human endometrium tissue using anti-TLE2 mouse monoclonal antibody. (M10582)



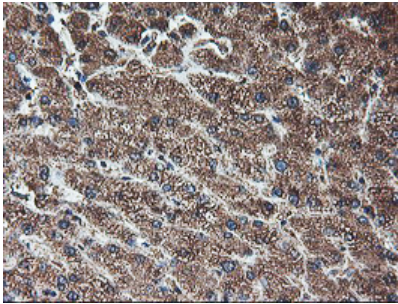
Immunohistochemical staining of paraffin-embedded Human tonsil within the normal limits using anti-TLE2 mouse monoclonal antibody. (M10582)



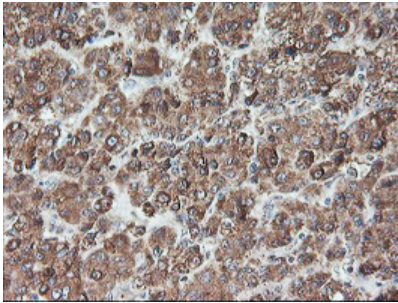
Immunohistochemical staining of paraffin-embedded Human Kidney tissue within the normal limits using anti-TLE2 mouse monoclonal antibody. (M10582)



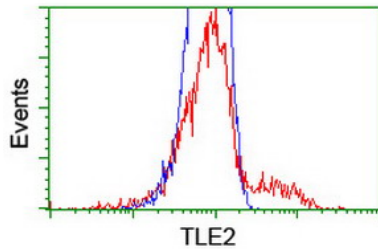
Immunohistochemical staining of paraffin-embedded Carcinoma of Human kidney tissue using anti-TLE2 mouse monoclonal antibody. (M10582)



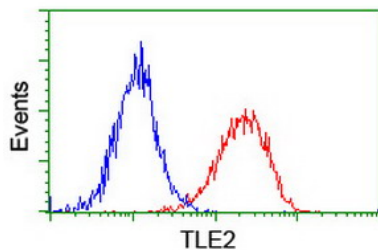
Immunohistochemical staining of paraffin-embedded Human liver tissue within the normal limits using anti-TLE2 mouse monoclonal antibody. (M10582)



Immunohistochemical staining of paraffin-embedded Carcinoma of Human liver tissue using anti-TLE2 mouse monoclonal antibody. (M10582)

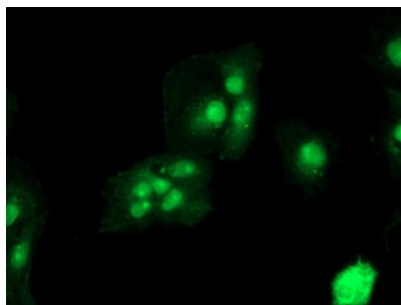
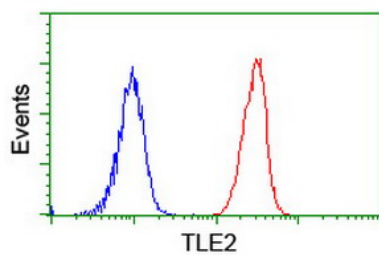


HEK293T cells transfected with either TLE2 (Myc-DDK-tagged) overexpress plasmid (Red) or empty vector control plasmid (Blue) were immunostained by anti-TLE2 antibody (M10582)



Flow cytometric Analysis of HeLa cells

Flow cytometric Analysis of Jurkat cells



Anti-TLE2 mouse monoclonal antibody (M10582) immunofluorescent staining of COS7 cells transiently transfected by pCMV6-ENTRY TLE2.

Submit a product review to Biocompare.com

Submit a review of this product to Biocompare.com to receive a \$20 Amazon.com giftcard! Your reviews help your fellow scientists make the right decisions. Thank you for your contribution.



Anti-TLE2 Mouse Monoclonal Antibody [Clone ID: OT15A6]

For Research Use Only. Not for use in diagnostic procedures.