

## Anti-SNRPB2 Mouse Monoclonal Antibody [Clone ID: OTI3A7]

Catalog Number: M10709-1

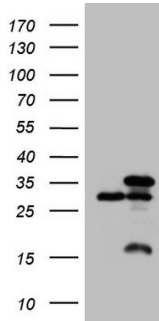
### Overview

Product Name	Anti-SNRPB2 Mouse Monoclonal Antibody [Clone ID: OTI3A7]
Reactive Species	Human, Mouse, Rat
Description	Boster Bio SNRPB2 mouse monoclonal antibody, clone OTI3A7 (formerly 3A7). Catalog# M10709-1. Tested in IF, IHC, WB. This antibody reacts with Human, Mouse, Rat.
Application	IF, IHC, WB
Clonality	Monoclonal OTI3A7
Formulation	PBS (pH 7.3) containing 1% stabilizing protein, 50% glycerol and 0.02% sodium azide. This antibody is supplied in a stabilized formulation. Compatibility with conjugation reactions depends on the chemistry of the conjugation method used. For conjugation methods that are not compatible with the stabilizing components present in this formulation, a carrier-free antibody format is required.
Storage Instructions	Store at -20°C as received.
Host	Mouse
Uniprot ID	P08579

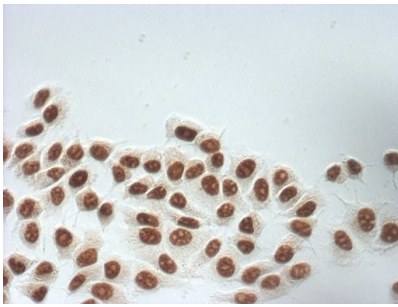
### Technical Details

Immunogen	Full length human recombinant protein of human SNRPB2 (NP_937863) produced in E.coli.
Isotype	IgG1
Concentration	1 mg/ml
Purification	Purified from mouse ascites fluids or tissue culture supernatant by affinity chromatography (protein A/G)
Suggested Dilutions	WB 1:2000, IHC 1:100, IF 1:100

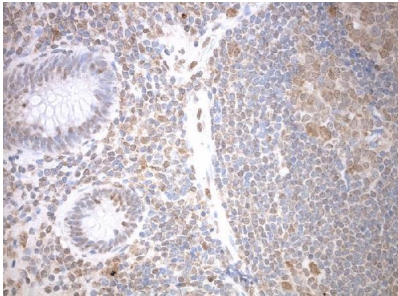
## Anti-SNRPB2 Mouse Monoclonal Antibody [Clone ID: OTI3A7] (M10709-1) Images



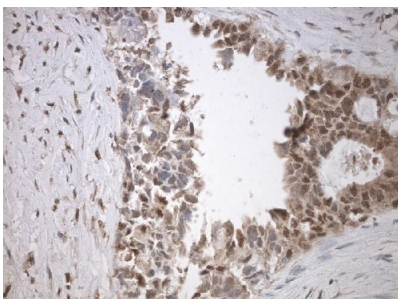
HEK293T cells were transfected with the pCMV6-ENTRY control (Left lane) or pCMV6-ENTRY SNRPB2 (Right lane) cDNA for 48 hrs and lysed. Equivalent amounts of cell lysates (5 ug per lane) were separated by SDS-PAGE and immunoblotted with anti-SNRPB2 (1:2000).



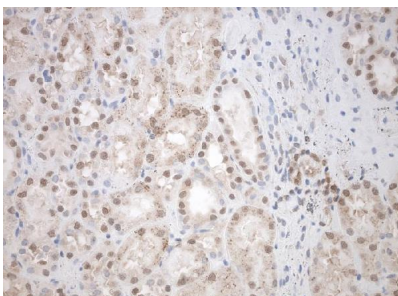
Immunocytochemistry staining of MCF-7 cells using anti-SNRPB2 mouse monoclonal antibody (M10709-1) (1:100).



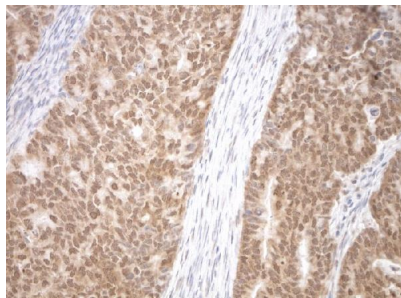
Immunohistochemical staining of paraffinembedded appendix using anti-SNRPB2 C/N M10709-1 clone OTI3A7 mouse monoclonal antibody. HIER TEE buffer pH9 at 110C for 10 min, anti-SNRPB2 diluted to 1:100. Detection was done with Polink1 Broad Mouse and Rabbit C/N with DAB Kit. Image 40x magnification.



Immunohistochemical staining of paraffinembedded endometrial cancer using antiSNRPB2 C/N M10709-1 clone OTI3A7 mouse monoclonal antibody. HIER TEE buffer pH9 at 110C for 10 min, anti-SNRPB2 diluted to 1:100. Detection was done with Polink1 Broad Mouse and Rabbit C/N with DAB Kit. Image 40x magnification.



Immunohistochemical staining of paraffinembedded normal kidney using anti-SNRPB2 C/N M10709-1 clone OTI3A7 mouse monoclonal antibody. HIER TEE buffer pH9 at 110C for 10 min, anti-SNRPB2 diluted to 1:100. Detection was done with Polink1 Broad Mouse and Rabbit C/N with DAB Kit. Image 40x magnification.



Immunohistochemical staining of paraffinembedded endometrial cancer using antiSNRPB2 C/N M10709-1 clone OT13A7 mouse monoclonal antibody. HIER TEE buffer pH9 at 110C for 10 min, anti-SNRPB2 diluted to 1:100. Detection was done with Polink1 Broad Mouse and Rabbit C/N with DAB Kit. Image 40x magnification.

## Submit a product review to Biocompare.com

Submit a review of this product to Biocompare.com to receive a \$20 Amazon.com giftcard! Your reviews help your fellow scientists make the right decisions. Thank you for your contribution.



Anti-SNRPB2 Mouse Monoclonal Antibody [Clone ID: OT13A7]

For Research Use Only. Not for use in diagnostic procedures.