

## Anti-SCHIP1 Mouse Monoclonal Antibody [Clone ID: OTI1C8]

Catalog Number: M10758-1

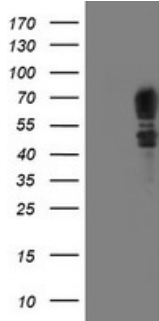
### Overview

Product Name	Anti-SCHIP1 Mouse Monoclonal Antibody [Clone ID: OTI1C8]
Reactive Species	Human, Mouse
Description	Boster Bio SCHIP1 mouse monoclonal antibody, clone OTI1C8 (formerly 1C8). Catalog# M10758-1. Tested in IF, IHC, WB. This antibody reacts with Human, Mouse.
Application	IF, IHC, WB
Clonality	Monoclonal OTI1C8
Formulation	PBS (pH 7.3) containing 1% stabilizing protein, 50% glycerol and 0.02% sodium azide. This antibody is supplied in a stabilized formulation. Compatibility with conjugation reactions depends on the chemistry of the conjugation method used. For conjugation methods that are not compatible with the stabilizing components present in this formulation, a carrier-free antibody format is required.
Storage Instructions	Store at -20°C as received.
Host	Mouse
Uniprot ID	P0DPB3

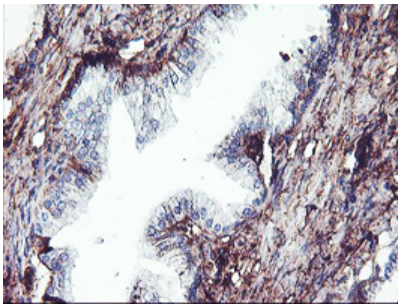
### Technical Details

Immunogen	Full length human recombinant protein of human SCHIP1 (NP_055390) produced in HEK293T cell.
Isotype	IgG1
Concentration	0.62 mg/ml
Purification	Purified from mouse ascites fluids or tissue culture supernatant by affinity chromatography (protein A/G)
Suggested Dilutions	WB 1:2000 IHC 1:150 IF 1:100

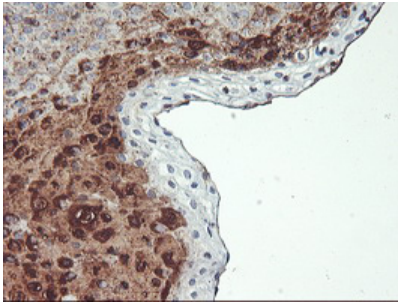
## Anti-SCHIP1 Mouse Monoclonal Antibody [Clone ID: OTI1C8] (M10758-1) Images



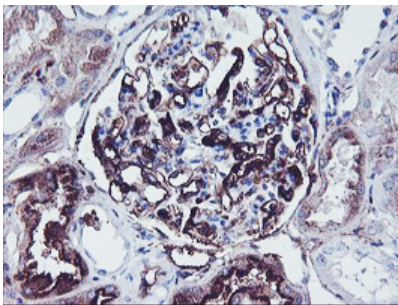
HEK293T cells were transfected with the pCMV6-ENTRY control (Left lane) or pCMV6-ENTRY SCHIP1 (Right lane) cDNA for 48 hrs and lysed. Equivalent amounts of cell lysates (5 ug per lane) were separated by SDS-PAGE and immunoblotted with anti-SCHIP1.



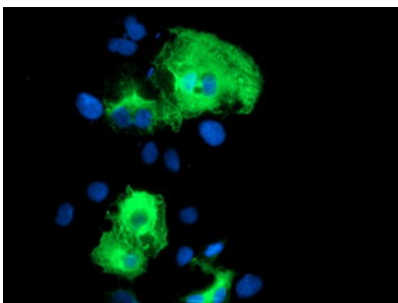
Immunohistochemical staining of paraffin-embedded Human prostate tissue within the normal limits using anti-SCHIP1 mouse monoclonal antibody. (Heat-induced epitope retrieval by 10mM citric buffer)



Immunohistochemical staining of paraffin-embedded Human tonsil within the normal limits using anti-SCHIP1 mouse monoclonal antibody. (Heat-induced epitope retrieval by 10mM citric buffer)



Immunohistochemical staining of paraffin-embedded Human Kidney tissue within the normal limits using anti-SCHIP1 mouse monoclonal antibody. (Heat-induced epitope retrieval by 10mM citric buffer)



Anti-SCHIP1 mouse monoclonal antibody (M10758-1) immunofluorescent staining of COS7 cells transiently transfected by pCMV6-ENTRY SCHIP1.

## Submit a product review to Biocompare.com

Submit a review of this product to Biocompare.com to receive a \$20 Amazon.com giftcard! Your reviews help your fellow scientists make the right decisions. Thank you for your contribution.



Anti-SCHIP1 Mouse Monoclonal Antibody [Clone ID: OT11C8]

For Research Use Only. Not for use in diagnostic procedures.