

Anti-RLTPR Purified CARMIL2 Monoclonal Antibody

Catalog Number: M10789

About CARMIL2

RLTPR / CARMIL2 (RGD motif, leucine rich repeats, tropomodulin domain and proline-rich containing; capping protein regulator and myosin 1 linker 2), also known as LRRC16C, is a cytosolic protein, which with high affinity binds CAPZA2 (capping protein muscle actin Z-line alpha 2) and decreases CAPZA2 affinity for actin barbed ends. RLTPR / CARMIL2 increases the rate of actin filament elongation from seeds in the presence of CAPZA2, however, seems unable to nucleate filaments. Its interaction with CAPZA2 is essential for lamellipodial protrusion and cell translocation. RLTPR / CARMIL2 is crucial for T cell costimulation via CD28 and this property seems to be independent on its actin-uncapping function. The lack of functional RLTPR / CARMIL2 molecules impeded the differentiation toward Th1 and Th17 fates of both human and murine CD4+ T cells and leads to combined immunodeficiency. Expression of RLTPR / CARMIL2 was also detected in human and murine B cells, but it seems not to be involved in BCR-mediated signaling.

Overview

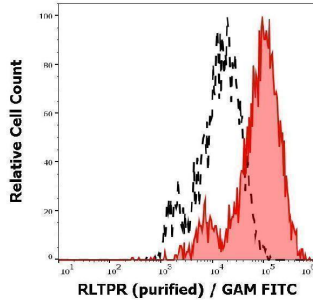
| | |
|----------------------|--|
| Product Name | Anti-RLTPR Purified CARMIL2 Monoclonal Antibody |
| Reactive Species | Human, Mouse |
| Description | Boster Bio Anti-RLTPR Purified CARMIL2 Monoclonal Antibody (Catalog# M10789). Tested in Flow Cytometry, WB application(s). This antibody reacts with Mouse, Human. |
| Application | Flow Cytometry, WB |
| Clonality | Monoclonal EM-53 |
| Formulation | Phosphate buffered saline (PBS), pH 7.4, 15 mM sodium azide |
| Storage Instructions | Store at 2-8°C. Do not freeze. |
| Host | Mouse |
| Uniprot ID | Q6F5E8 |

Technical Details

| | |
|----------------------------|--|
| Immunogen | Murine RLTPR. The mouse monoclonal antibody EM-53 recognizes RLTPR / CARMIL2, an intracellular protein playing a role in actin filament elongation. |
| Predicted Reactive Species | Primate |
| Cross Reactivity | As in case with other anti-CD170 antibodies, this antibody cross-reacts with Siglec-14, whose first two Ig domains are almost identical to those of CD170. |
| Isotype | Mouse IgG1 kappa |
| Form | Liquid |

| | |
|---------------------|--|
| Concentration | 1 mg/ml |
| Purification | Purified by protein-A affinity chromatography. |
| Suggested Dilutions | Flow cytometry: 1-4 µg/ml. Intracellular staining. |

Anti-RLTPR Purified CARMIL2 Monoclonal Antibody (M10789) Images



Separation of RLTPR transfected cells stained using anti-human RLTPR (EM-53) purified antibody (GAM FITC, concentration in sample 9 µg/ml, red-filled) from RLTPR transfected cells stained using mouse IgG1 isotype control (MOPC-21) purified antibody (GAM FITC, concentration in sample 9 µg/ml, black-dashed) in flow cytometry analysis (intracellular staining).

Submit a product review to Biocompare.com

Submit a review of this product to Biocompare.com to receive a \$20 Amazon.com giftcard! Your reviews help your fellow scientists make the right decisions. Thank you for your contribution.



Anti-RLTPR Purified CARMIL2 Monoclonal Antibody

For Research Use Only. Not for use in diagnostic procedures.