

Anti-CCNB1IP1 Mouse Monoclonal Antibody [Clone ID: OTI4H3]

Catalog Number: M10821

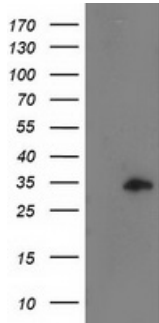
Overview

Product Name	Anti-CCNB1IP1 Mouse Monoclonal Antibody [Clone ID: OTI4H3]
Reactive Species	Human, Mouse, Rat
Description	Boster Bio CCNB1IP1 mouse monoclonal antibody, clone OTI4H3 (formerly 4H3). Catalog# M10821. Tested in FC, IHC, WB. This antibody reacts with Human, Mouse, Rat.
Application	Flow Cytometry, IHC, WB
Clonality	Monoclonal OTI4H3
Formulation	PBS (pH 7.3) containing 1% stabilizing protein, 50% glycerol and 0.02% sodium azide. This antibody is supplied in a stabilized formulation. Compatibility with conjugation reactions depends on the chemistry of the conjugation method used. For conjugation methods that are not compatible with the stabilizing components present in this formulation, a carrier-free antibody format is required.
Storage Instructions	Store at -20°C as received.
Host	Mouse
Uniprot ID	Q9NPC3

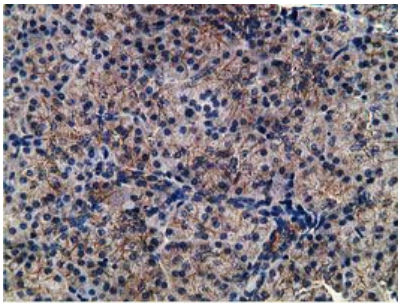
Technical Details

Immunogen	Full length human recombinant protein of human CCNB1IP1 (NP_878269) produced in E.coli.
Isotype	IgG1
Concentration	1.1 mg/ml
Purification	Purified from mouse ascites fluids or tissue culture supernatant by affinity chromatography (protein A/G)
Suggested Dilutions	WB: 1:500 IHC: 1:150 Flow cytometry: 1:100

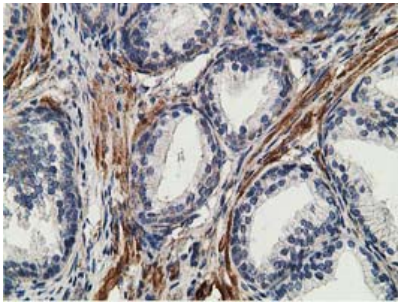
Anti-CCNB1IP1 Mouse Monoclonal Antibody [Clone ID: OTI4H3] (M10821) Images



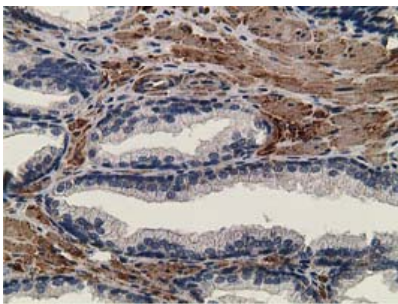
HEK293T cells were transfected with the pCMV6-ENTRY control (Left lane) or pCMV6-ENTRY CCNB1IP1 (Right lane) cDNA for 48 hrs and lysed. Equivalent amounts of cell lysates (5 ug per lane) were separated by SDS-PAGE and immunoblotted with anti-CCNB1IP1.



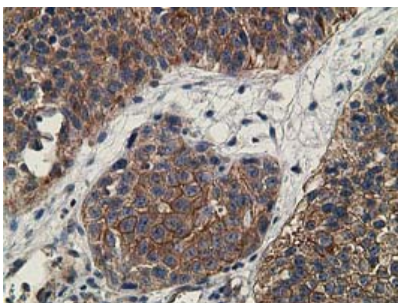
Immunohistochemical staining of paraffin-embedded Human pancreas tissue within the normal limits using anti-CCNB1IP1 mouse monoclonal antibody. (Heat-induced epitope retrieval by 10mM citric buffer)



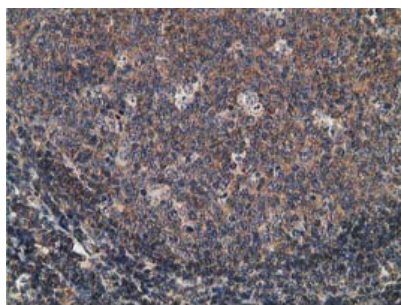
Immunohistochemical staining of paraffin-embedded Human prostate tissue within the normal limits using anti-CCNB1IP1 mouse monoclonal antibody. (Heat-induced epitope retrieval by 10mM citric buffer)



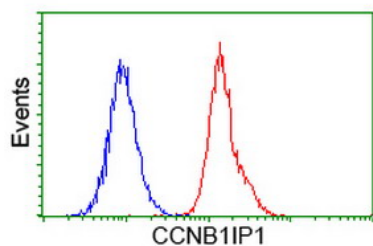
Immunohistochemical staining of paraffin-embedded Carcinoma of Human prostate tissue using anti-CCNB1IP1 mouse monoclonal antibody. (Heat-induced epitope retrieval by 10mM citric buffer)



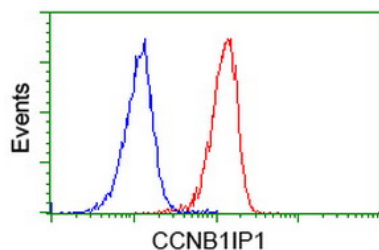
Immunohistochemical staining of paraffin-embedded Carcinoma of Human bladder tissue using anti-CCNB1IP1 mouse monoclonal antibody. (Heat-induced epitope retrieval by 10mM citric buffer)



Immunohistochemical staining of paraffin-embedded Human lymph node tissue within the normal limits using anti-CCNB1IP1 mouse monoclonal antibody. (Heat-induced epitope retrieval by 10mM citric buffer)



Flow cytometric Analysis of HeLa cells



Flow cytometric Analysis of Jurkat cells

Submit a product review to Biocompare.com

Submit a review of this product to Biocompare.com to receive a \$20 Amazon.com giftcard! Your reviews help your fellow scientists make the right decisions. Thank you for your contribution.



Anti-CCNB1IP1 Mouse Monoclonal Antibody [Clone ID: OTI4H3]

For Research Use Only. Not for use in diagnostic procedures.