

## Anti-RGS18 Rabbit Monoclonal Antibody

Catalog Number: M10844-1

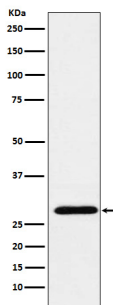
### Overview

|                      |  |
|----------------------|--|
| Product Name         | Anti-RGS18 Rabbit Monoclonal Antibody  |
| Reactive Species     | Human  |
| Description          | Boster Bio Anti-RGS18 Rabbit Monoclonal Antibody catalog # M10844-1. Tested in WB application. This antibody reacts with Human.  |
| Application          | WB   |
| Clonality            | Monoclonal 22R34   |
| Formulation          | Rabbit IgG in stabilizing components, phosphate buffered saline, pH 7.4, 150mM NaCl, 0.02% sodium azide and 50% glycerol.<br>*This antibody is supplied in a stabilized formulation.<br>Compatibility with conjugation reactions depends on the chemistry of the conjugation method used. For conjugation methods that are not compatible with the stabilizing components present in this formulation, a carrier-free antibody format is required. |
| Storage Instructions | Store at -20°C for one year. For short term storage and frequent use, store at 4°C for up to one month. Avoid repeated freeze-thaw cycles.   |
| Host                 | Rabbit   |
| Uniprot ID           | Q9NS28   |

### Technical Details

|                     |  |
|---------------------|--|
| Immunogen           | A synthesized peptide derived from human RGS18 |
| Isotype             | IgG  |
| Form                | Liquid   |
| Concentration       | 0.5mg/ml                                       |
| Purification        | Affinity-chromatography                        |
| Suggested Dilutions | WB 1:500-2000                                  |

## Anti-RGS18 Rabbit Monoclonal Antibody (M10844-1) Images



Western blot analysis of RGS18 expression in Human PBMC lysate.

### Submit a product review to Biocompare.com

Submit a review of this product to Biocompare.com to receive a \$20 Amazon.com giftcard! Your reviews help your fellow scientists make the right decisions. Thank you for your contribution.



Anti-RGS18 Rabbit Monoclonal Antibody

For Research Use Only. Not for use in diagnostic procedures.