

Anti-ABCF2 Mouse Monoclonal Antibody [Clone ID: OTI8F4]

Catalog Number: M10873

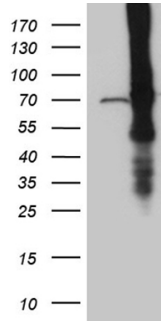
Overview

| | |
|----------------------|--|
| Product Name | Anti-ABCF2 Mouse Monoclonal Antibody [Clone ID: OTI8F4] |
| Reactive Species | Human, Mouse |
| Description | Boster Bio ABCF2 mouse monoclonal antibody, clone OTI8F4. Catalog# M10873. Tested in IHC, WB. This antibody reacts with Human, Mouse. |
| Application | IHC, WB |
| Clonality | Monoclonal OTI8F4 |
| Formulation | PBS (pH 7.3) containing 1% stabilizing protein, 50% glycerol and 0.02% sodium azide. This antibody is supplied in a stabilized formulation. Compatibility with conjugation reactions depends on the chemistry of the conjugation method used. For conjugation methods that are not compatible with the stabilizing components present in this formulation, a carrier-free antibody format is required. |
| Storage Instructions | Store at -20°C as received. |
| Host | Mouse |
| Uniprot ID | Q9UG63 |

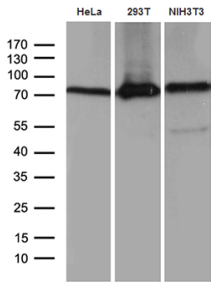
Technical Details

| | |
|---------------------|--|
| Immunogen | Human recombinant protein fragment corresponding to amino acids 1-235 of human ABCF2 (NP_009120) produced in E.coli. |
| Isotype | IgG1 |
| Concentration | 1 mg/ml |
| Purification | Purified from mouse ascites fluids or tissue culture supernatant by affinity chromatography (protein A/G) |
| Suggested Dilutions | WB: 1:500~2000 IHC: 1:500 |

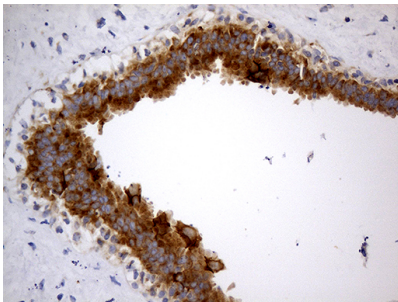
Anti-ABCF2 Mouse Monoclonal Antibody [Clone ID: OTI8F4] (M10873) Images



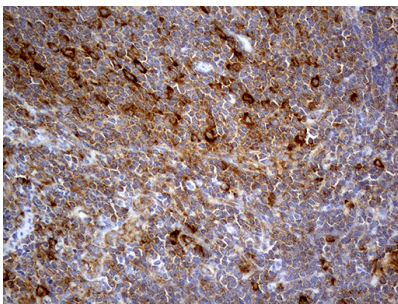
HEK293T cells were transfected with the pCMV6-ENTRY control (Left lane) or pCMV6-ENTRY ABCF2 (Right lane) cDNA for 48 hrs and lysed. Equivalent amounts of cell lysates (5 ug per lane) were separated by SDS-PAGE and immunoblotted with anti-ABCF2 (1:2000).



Western blot analysis of extracts (35ug) from 3 different cell lines by using anti-ABCF2 monoclonal antibody (1:500).

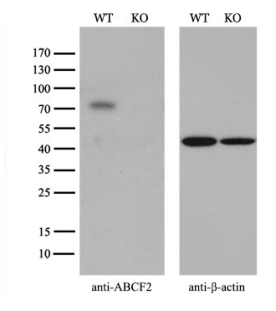
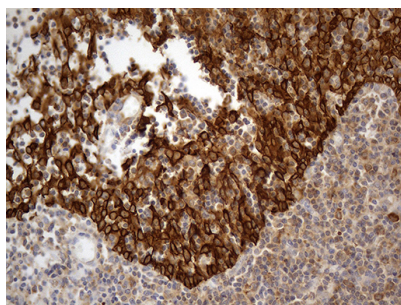


Immunohistochemical staining of paraffin-embedded Human breast tissue within the normal limits using anti-ABCF2 mouse monoclonal antibody. (Heat-induced epitope retrieval by 1mM EDTA in 10mM Tris buffer (pH8.5) at 120Å°C for 3min)



Immunohistochemical staining of paraffin-embedded Human lymphoma tissue using anti-ABCF2 mouse monoclonal antibody. (Heat-induced epitope retrieval by 1mM EDTA in 10mM Tris buffer (pH8.5) at 120Å°C for 3min)

Immunohistochemical staining of paraffin-embedded Human tonsil within the normal limits using anti-ABCF2 mouse monoclonal antibody. (Heat-induced epitope retrieval by 1mM EDTA in 10mM Tris buffer (pH8.5) at 120Å°C for 3min)



Equivalent amounts of cell lysates (10 ug per lane) of wild-type 293T cells (WT) and ABCF2-Knockout 293T cells (KO) were separated by SDS-PAGE and immunoblotted with anti-ABCF2 monoclonal antibody M10873

Submit a product review to [Biocompare.com](https://www.biocompare.com)

Submit a review of this product to [Biocompare.com](https://www.biocompare.com) to receive a \$20 Amazon.com giftcard! Your reviews help your fellow scientists make the right decisions. Thank you for your contribution.



Anti-ABCF2 Mouse Monoclonal Antibody [Clone ID: OT18F4]

For Research Use Only. Not for use in diagnostic procedures.