

## Anti-RAB20 Antibody

Catalog Number: M11018

### About RAB20

Plays a role in apical endocytosis/recycling. Plays a role in the maturation and acidification of phagosomes that engulf pathogens, such as S.aureus and M.tuberculosis. Plays a role in the fusion of phagosomes with lysosomes.

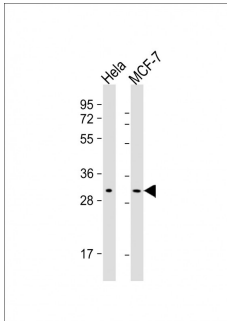
### Overview

Product Name	Anti-RAB20 Antibody
Reactive Species	Human
Description	Boster Bio Anti-RAB20 Antibody (Catalog # M11018). Tested in WB, Flow Cytometry application(s). This antibody reacts with Human.
Application	Flow Cytometry, WB
Clonality	Monoclonal 1694CT210.218.54
Formulation	Purified monoclonal antibody supplied in PBS with 0.09% (W/V) sodium azide.
Storage Instructions	Maintain refrigerated at 2-8°C for up to 2 weeks. For long-term storage, store at -20°C in small aliquots to prevent freeze-thaw cycles.
Host	Mouse
Uniprot ID	Q9NX57

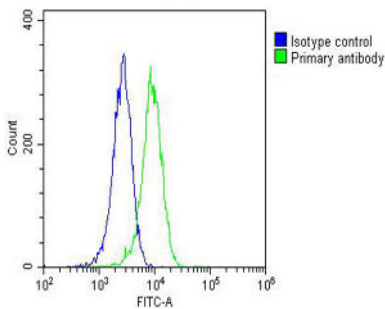
### Technical Details

Immunogen	This RAB20 antibody is generated from a mouse immunized with recombinant protein from human RAB20.
Predicted Reactive Species	Mouse
Isotype	IgG2a
Purification	This antibody is purified through a protein G column, followed by dialysis against PBS.
Suggested Dilutions	WB: 1:2000-1:4000 FC: 1:25

## Anti-RAB20 Antibody (M11018) Images



All lanes : Anti-RAB20 Antibody at 1:2000-1:4000 dilution  
Lane 1: HeLa whole cell lysate  
Lane 2: MCF-7 whole cell lysate  
Lysates/proteins at 20 µg per lane. Secondary Goat Anti-Mouse IgG, (H+L), Peroxidase conjugated at 1/10000 dilution. Predicted band size : 26 kDa  
Blocking/Dilution buffer: 5% NFDM/TBST.



Overlay histogram showing HeLa cells stained with M11018 (green line). The cells were fixed with 2% paraformaldehyde (10 min) and then permeabilized with 90% methanol for 10 min. The cells were then incubated in 2% bovine serum albumin to block non-specific protein-protein interactions followed by the antibody (M11018, 1:25 dilution) for 60 min at 37°C. The secondary antibody used was Goat-Anti-Mouse IgG, DyLight® 488 Conjugated Highly Cross-Adsorbed at 1/200 dilution for 40 min at 37°C. Isotype control antibody (blue line) was mouse IgG2a (1µg/1x10<sup>6</sup> cells) used under the same conditions. Acquisition of >10,000 events was performed.

## Submit a product review to Biocompare.com

Submit a review of this product to Biocompare.com to receive a \$20 Amazon.com giftcard! Your reviews help your fellow scientists make the right decisions. Thank you for your contribution.



Anti-RAB20 Antibody

For Research Use Only. Not for use in diagnostic procedures.