

## Anti-EXOSC7 Mouse Monoclonal Antibody [Clone ID: OT11G8]

Catalog Number: M11141

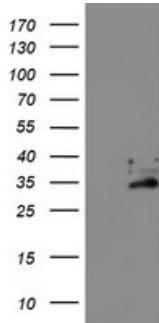
### Overview

|                      |  |
|----------------------|--|
| Product Name         | Anti-EXOSC7 Mouse Monoclonal Antibody [Clone ID: OT11G8]   |
| Reactive Species     | Dog, Human, Monkey, Mouse, Rat   |
| Description          | Boster Bio EXOSC7 mouse monoclonal antibody, clone OT11G8 (formerly 1G8). Catalog# M11141. Tested in FC, IF, IHC, WB. This antibody reacts with Human, Monkey, Mouse, Rat, Dog.  |
| Application          | Flow Cytometry, IF, IHC, WB  |
| Clonality            | Monoclonal OT11G8  |
| Formulation          | PBS (pH 7.3) containing 1% stabilizing protein, 50% glycerol and 0.02% sodium azide. This antibody is supplied in a stabilized formulation. Compatibility with conjugation reactions depends on the chemistry of the conjugation method used. For conjugation methods that are not compatible with the stabilizing components present in this formulation, a carrier-free antibody format is required. |
| Storage Instructions | Store at -20°C as received.  |
| Host                 | Mouse  |
| Uniprot ID           | Q15024   |

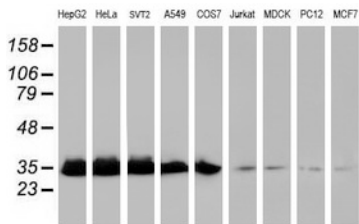
### Technical Details

|                     |   |
|---------------------|---|
| Immunogen           | Full length human recombinant protein of human EXOSC7 (NP_055819) produced in HEK293T cell.               |
| Isotype             | IgG1  |
| Concentration       | 0.76 mg/ml  |
| Purification        | Purified from mouse ascites fluids or tissue culture supernatant by affinity chromatography (protein A/G) |
| Suggested Dilutions | WB 1:500~2000<br>IHC 1:150<br>IF 1:100<br>Flow Cytometry 1:100  |

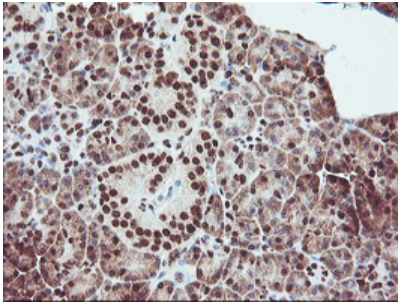
## Anti-EXOSC7 Mouse Monoclonal Antibody [Clone ID: OTI1G8] (M11141) Images



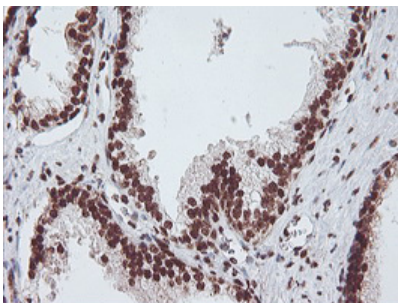
HEK293T cells were transfected with the pCMV6-ENTRY control (Left lane) or pCMV6-ENTRY EXOSC7 (Right lane) cDNA for 48 hrs and lysed. Equivalent amounts of cell lysates (5 ug per lane) were separated by SDS-PAGE and immunoblotted with anti-EXOSC7.



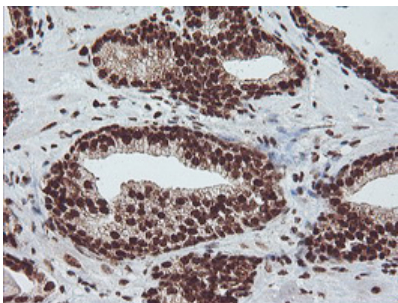
Western blot analysis of extracts (35ug) from 9 different cell lines by using anti-EXOSC7 monoclonal antibody (HepG2: human; HeLa: human; SVT2: mouse; A549: human; COS7: monkey; Jurkat: human; MDCK: canine; PC12: rat; MCF7: human).



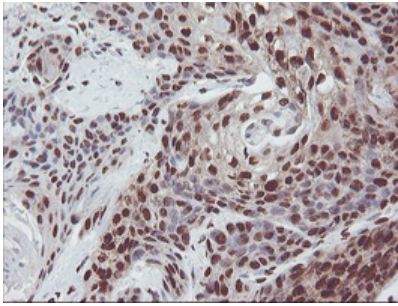
Immunohistochemical staining of paraffin-embedded Human pancreas tissue within the normal limits using anti-EXOSC7 mouse monoclonal antibody. (Heat-induced epitope retrieval by 10mM citric buffer)



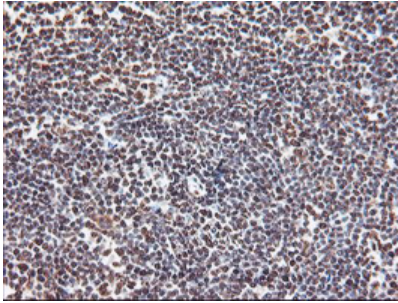
Immunohistochemical staining of paraffin-embedded Human prostate tissue within the normal limits using anti-EXOSC7 mouse monoclonal antibody. (Heat-induced epitope retrieval by 10mM citric buffer)



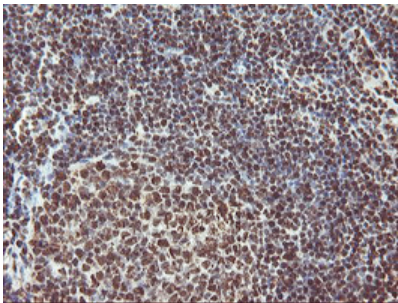
Immunohistochemical staining of paraffin-embedded Carcinoma of Human prostate tissue using anti-EXOSC7 mouse monoclonal antibody. (Heat-induced epitope retrieval by 10mM citric buffer)



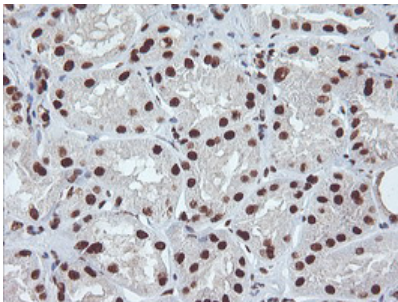
Immunohistochemical staining of paraffin-embedded Carcinoma of Human bladder tissue using anti-EXOSC7 mouse monoclonal antibody. (Heat-induced epitope retrieval by 10mM citric buffer)



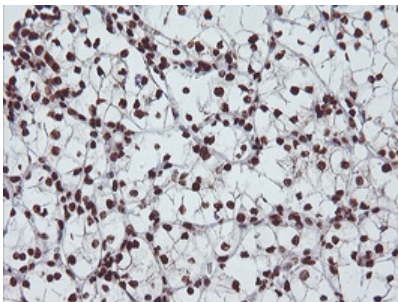
Immunohistochemical staining of paraffin-embedded Human lymphoma tissue using anti-EXOSC7 mouse monoclonal antibody. (Heat-induced epitope retrieval by 10mM citric buffer)



Immunohistochemical staining of paraffin-embedded Human tonsil within the normal limits using anti-EXOSC7 mouse monoclonal antibody. (Heat-induced epitope retrieval by 10mM citric buffer)

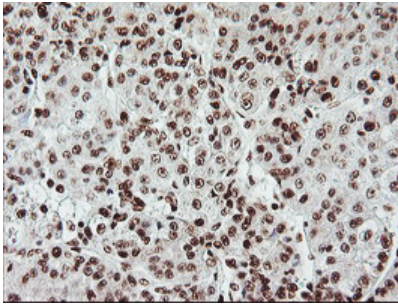


Immunohistochemical staining of paraffin-embedded Human Kidney tissue within the normal limits using anti-EXOSC7 mouse monoclonal antibody. (Heat-induced epitope retrieval by 10mM citric buffer)

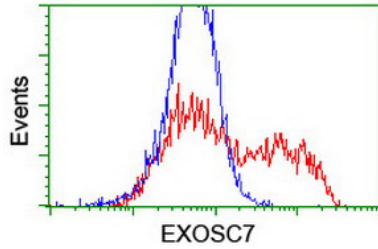


Immunohistochemical staining of paraffin-embedded Carcinoma of Human kidney tissue using anti-EXOSC7 mouse monoclonal antibody. (Heat-induced epitope retrieval by 10mM citric buffer)

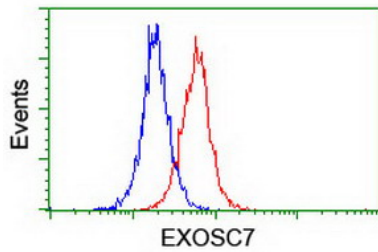
Immunohistochemical staining of paraffin-embedded Carcinoma of Human liver tissue using anti-EXOSC7 mouse



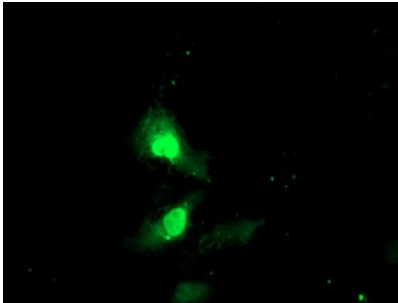
monoclonal antibody. (Heat-induced epitope retrieval by 10mM citric buffer)



HEK293T cells transfected with either EXOSC7 (Myc-DDK-tagged) overexpress plasmid (Red) or empty vector control plasmid (Blue) were immunostained by anti-EXOSC7 antibody (M11141)



Flow cytometric Analysis of Jurkat cells



Anti-EXOSC7 mouse monoclonal antibody (M11141) immunofluorescent staining of COS7 cells transiently transfected by pCMV6-ENTRY EXOSC7.

## Submit a product review to Biocompare.com

Submit a review of this product to Biocompare.com to receive a \$20 Amazon.com giftcard! Your reviews help your fellow scientists make the right decisions. Thank you for your contribution.



Anti-EXOSC7 Mouse Monoclonal Antibody [Clone ID: OT11G8]

For Research Use Only. Not for use in diagnostic procedures.