

## Anti-SCY1 like 3 (SCYL3) Mouse Monoclonal Antibody [Clone ID: OTI4F10]

Catalog Number: M11167-1

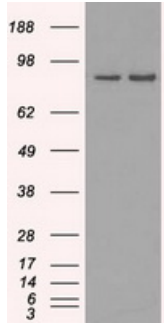
### Overview

Product Name	Anti-SCY1 like 3 (SCYL3) Mouse Monoclonal Antibody [Clone ID: OTI4F10]
Reactive Species	Human, Monkey
Description	Boster Bio Anti-SCYL3 mouse monoclonal antibody, clone OTI4F10 (formerly 4F10). Catalog# M11167-1. Tested in IF, IHC, WB. This antibody reacts with Human, Monkey.
Application	IF, IHC, WB
Clonality	Monoclonal OTI4F10
Formulation	PBS (pH 7.3) containing 1% stabilizing protein, 50% glycerol and 0.02% sodium azide. This antibody is supplied in a stabilized formulation. Compatibility with conjugation reactions depends on the chemistry of the conjugation method used. For conjugation methods that are not compatible with the stabilizing components present in this formulation, a carrier-free antibody format is required.
Storage Instructions	Store at -20°C as received.
Host	Mouse
Uniprot ID	Q8IZE3

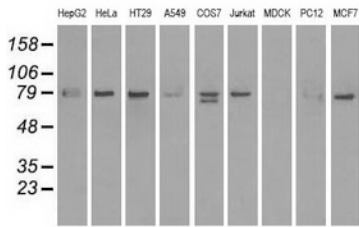
### Technical Details

Immunogen	Full-length protein expressed in 293T cell transfected with human SCYL3 expression vector
Isotype	IgG1
Concentration	1 mg/ml
Purification	Purified from mouse ascites fluids or tissue culture supernatant by affinity chromatography (protein A/G)
Suggested Dilutions	WB 1:2000 IHC 1:50 IF 1:100 Flow Cytometry 1:1,000

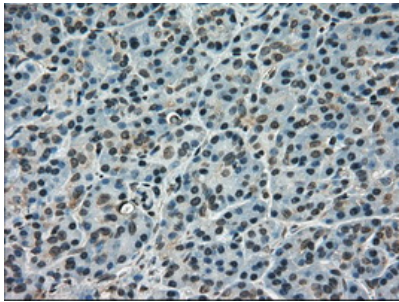
## Anti-SCY1 like 3 (SCYL3) Mouse Monoclonal Antibody [Clone ID: OTI4F10] (M11167-1) Images



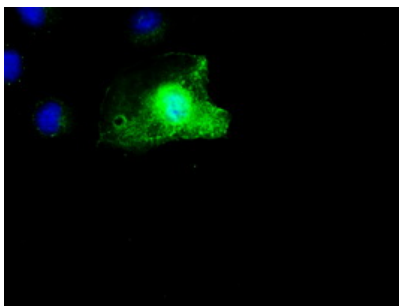
HEK293T cells were transfected with the pCMV6-ENTRY control (Left lane) or pCMV6-ENTRY SCYL3 (Right lane) cDNA for 48 hrs and lysed. Equivalent amounts of cell lysates (5 ug per lane) were separated by SDS-PAGE and immunoblotted with anti-SCYL3.



Western blot analysis of extracts (35ug) from 9 different cell lines by using anti-SCYL3 monoclonal antibody.



Immunohistochemical staining of paraffin-embedded pancreas tissue within the normal limits using anti-SCYL3 mouse monoclonal antibody. (Heat-induced epitope retrieval by 10mM citric buffer)



Anti-SCYL3 mouse monoclonal antibody (M11167-1) immunofluorescent staining of COS7 cells transiently transfected by pCMV6-ENTRY SCYL3.

**Submit a product review to Biocompare.com**

Submit a review of this product to Biocompare.com to receive a \$20 Amazon.com giftcard! Your reviews help your fellow scientists make the right decisions. Thank you for your contribution.



For Research Use Only. Not for use in diagnostic procedures.