

Anti-EVA1 (MPZL2) Mouse Monoclonal Antibody [Clone ID: OTI2C7]

Catalog Number: M11230

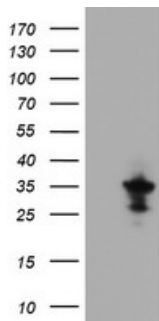
Overview

| | |
|----------------------|--|
| Product Name | Anti-EVA1 (MPZL2) Mouse Monoclonal Antibody [Clone ID: OTI2C7] |
| Reactive Species | Human |
| Description | Boster Bio MPZL2 (EVA1) mouse monoclonal antibody, clone OTI2C7 (formerly 2C7). Catalog# M11230. Tested in IF, WB. This antibody reacts with Human. |
| Application | IF, WB |
| Clonality | Monoclonal OTI2C7 |
| Formulation | PBS (pH 7.3) containing 1% stabilizing protein, 50% glycerol and 0.02% sodium azide. This antibody is supplied in a stabilized formulation. Compatibility with conjugation reactions depends on the chemistry of the conjugation method used. For conjugation methods that are not compatible with the stabilizing components present in this formulation, a carrier-free antibody format is required. |
| Storage Instructions | Store at -20°C as received. |
| Host | Mouse |
| Uniprot ID | O60487 |

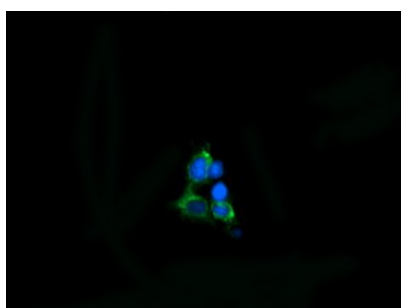
Technical Details

| | |
|---------------------|---|
| Immunogen | Full length human recombinant protein of human MPZL2 (NP_658911) produced in HEK293T cell. |
| Isotype | IgG1 |
| Concentration | 1 mg/ml |
| Purification | Purified from mouse ascites fluids or tissue culture supernatant by affinity chromatography (protein A/G) |
| Suggested Dilutions | WB 1:2000 IF 1:100 |

Anti-EVA1 (MPZL2) Mouse Monoclonal Antibody [Clone ID: OTI2C7] (M11230) Images



HEK293T cells were transfected with the pCMV6-ENTRY control (Left lane) or pCMV6-ENTRY MPZL2 (Right lane) cDNA for 48 hrs and lysed. Equivalent amounts of cell lysates (5 ug per lane) were separated by SDS-PAGE and immunoblotted with anti-MPZL2.



Anti-MPZL2 mouse monoclonal antibody (M11230) immunofluorescent staining of COS7 cells transiently transfected by pCMV6-ENTRY MPZL2.

Submit a product review to Biocompare.com

Submit a review of this product to Biocompare.com to receive a \$20 Amazon.com giftcard! Your reviews help your fellow scientists make the right decisions. Thank you for your contribution.



Anti-EVA1 (MPZL2) Mouse Monoclonal Antibody [Clone ID: OTI2C7]

For Research Use Only. Not for use in diagnostic procedures.