

Anti-Prostein Rabbit Monoclonal Antibody

Catalog Number: M11232-1

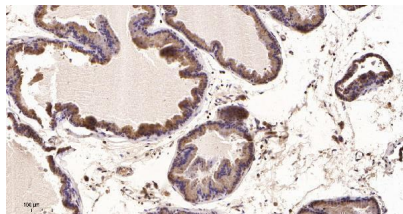
Overview

Product Name	Anti-Prostein Rabbit Monoclonal Antibody
Reactive Species	Human
Description	This Recombinant Rabbit Monoclonal Antibody detects endogenous levels of Prostein protein. Validated for research with IHC applications. Anti Prostein is reactive for Human samples
Application	IHC
Clonality	Monoclonal
Formulation	PBS, 50% glycerol, 0.05% Proclin 300, 0.05% stabilizing protein This antibody is supplied in a stabilized formulation. Compatibility with conjugation reactions depends on the chemistry of the conjugation method used. For conjugation methods that are not compatible with the stabilizing components present in this formulation, a carrier-free antibody format is required.
Storage Instructions	Store at -20°C/1 year
Host	Rabbit
Uniprot ID	Q96JT2

Technical Details

Isotype	IgG, Kappa
Purification	Protein A
Suggested Dilutions	IHC 1:100-1:300

Anti-Prostein Rabbit Monoclonal Antibody (M11232-1) Images



Immunohistochemical analysis of paraffin-embedded human Prostate tissue. 1,primary Antibody was diluted at 1:200(4°C,overnight). 2, EDTA pH 9.0 was used for antibody retrieval(>98°C,20min). 3,Secondary antibody was diluted at 1:200(room tempeRature, 30min).

Submit a product review to Biocompare.com

Submit a review of this product to Biocompare.com to receive a \$20 Amazon.com giftcard! Your reviews help your fellow scientists make the right decisions. Thank you for your contribution.



Anti-Prostein Rabbit Monoclonal Antibody

For Research Use Only. Not for use in diagnostic procedures.