

Anti-BTN1A1 Mouse Monoclonal Antibody [Clone ID: OTI5E6]

Catalog Number: M11266-1

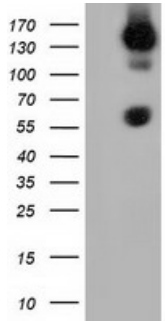
Overview

| | |
|----------------------|--------------------------------------------------------------------------------------------------------------------------------------------------------------------------------------------------------------------------------------------------------------------------------------------------------------------------------------------------------------------------------------------------------|
| Product Name | Anti-BTN1A1 Mouse Monoclonal Antibody [Clone ID: OTI5E6] |
| Reactive Species | Dog, Human, Monkey, Rat |
| Description | Boster Bio Anti-BTN1A1 mouse monoclonal antibody, clone OTI5E6 (formerly 5E6). Catalog# M11266-1. Tested in FC, IF, WB. This antibody reacts with Human, Monkey, Rat, Dog. |
| Application | Flow Cytometry, IF, WB |
| Clonality | Monoclonal OTI5E6 |
| Formulation | PBS (pH 7.3) containing 1% stabilizing protein, 50% glycerol and 0.02% sodium azide. This antibody is supplied in a stabilized formulation. Compatibility with conjugation reactions depends on the chemistry of the conjugation method used. For conjugation methods that are not compatible with the stabilizing components present in this formulation, a carrier-free antibody format is required. |
| Storage Instructions | Store at -20°C as received. |
| Host | Mouse |
| Uniprot ID | Q13410 |

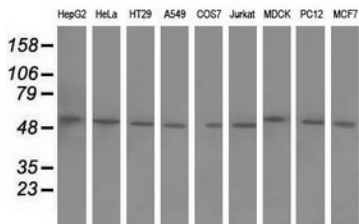
Technical Details

| | |
|---------------------|-----------------------------------------------------------------------------------------------------------|
| Immunogen | Full length human recombinant protein of human BTN1A1 (NP_001723) produced in HEK293T cell. |
| Isotype | IgG1 |
| Concentration | 1 mg/ml |
| Purification | Purified from mouse ascites fluids or tissue culture supernatant by affinity chromatography (protein A/G) |
| Suggested Dilutions | WB 1:500~2000 IF 1:100 |

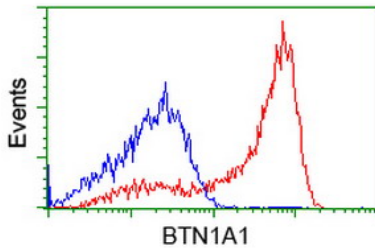
Anti-BTN1A1 Mouse Monoclonal Antibody [Clone ID: OTI5E6] (M11266-1) Images



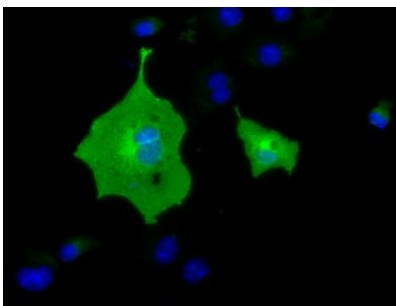
HEK293T cells were transfected with the pCMV6-ENTRY control (Left lane) or pCMV6-ENTRY BTN1A1 (Right lane) cDNA for 48 hrs and lysed. Equivalent amounts of cell lysates (5 ug per lane) were separated by SDS-PAGE and immunoblotted with anti-BTN1A1.



Western blot analysis of extracts (35ug) from 9 different cell lines by using anti-BTN1A1 monoclonal antibody.



HEK293T cells transfected with either BTN1A1 (Myc-DDK-tagged) overexpress plasmid (Red) or empty vector control plasmid (Blue) were immunostained by anti-BTN1A1 antibody (M11266-1)



Anti-BTN1A1 mouse monoclonal antibody (M11266-1) immunofluorescent staining of COS7 cells transiently transfected by pCMV6-ENTRY BTN1A1.

Submit a product review to [Biocompare.com](https://www.biocompare.com)

Submit a review of this product to [Biocompare.com](https://www.biocompare.com) to receive a \$20 Amazon.com giftcard! Your reviews help your fellow scientists make the right decisions. Thank you for your contribution.



Anti-BTN1A1 Mouse Monoclonal Antibody [Clone ID: OTI5E6]

For Research Use Only. Not for use in diagnostic procedures.