

Anti-Human IgA2 IGHA2 Rabbit Monoclonal Antibody, Clone#RM125

Catalog Number: M11271

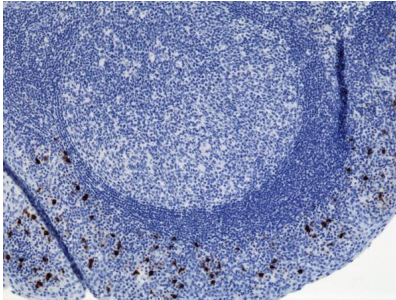
Overview

Product Name	Anti-Human IgA2 IGHA2 Rabbit Monoclonal Antibody, Clone#RM125
Reactive Species	Human
Description	Boster Bio Anti-Human IgA2 IGHA2 Rabbit Monoclonal Antibody, Clone#RM125 (Catalog # M11271). Tested in ELISA, ICC, IHC applications. This antibody reacts with Human.
Application	ELISA, IHC, ICC
Clonality	Monoclonal RM125
Formulation	50% Glycerol/PBS with 1% stabilizing protein and 0.09% sodium azide This antibody is supplied in a stabilized formulation. Compatibility with conjugation reactions depends on the chemistry of the conjugation method used. For conjugation methods that are not compatible with the stabilizing components present in this formulation, a carrier-free antibody format is required.
Storage Instructions	Store at -20°C for one year. Avoid repeated freeze-thaw cycles.
Host	Rabbit
Uniprot ID	P01877

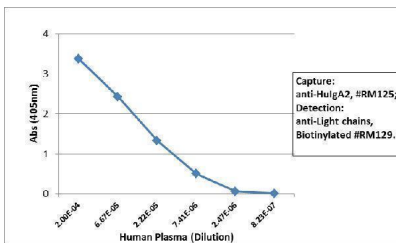
Technical Details

Immunogen	IgA2
Cross Reactivity	This antibody reacts to human IgA2. No cross-reactivity with human IgA1, IgG, IgM, IgD, or IgE.
Isotype	Rabbit IgG
Form	Liquid
Concentration	1 mg/mL
Purification	Protein A affinity purified from an animal origin-free culture supernatant
Suggested Dilutions	ELISA: 50ng/well – 200ng/well (for Capture) 0.05ug/mL – 0.2ug/mL (for Detection) Immunocytochemistry (ICC): 0.5ug/mL-2ug/mL Immunohistochemistry (IHC): 0.1ug/mL-1ug/mL.

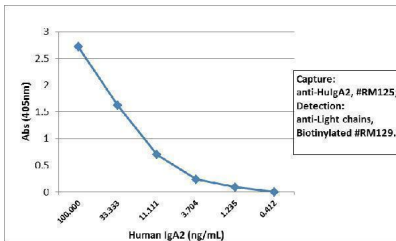
Anti-Human IgA2 IGHA2 Rabbit Monoclonal Antibody, Clone#RM125 (M11271) Images



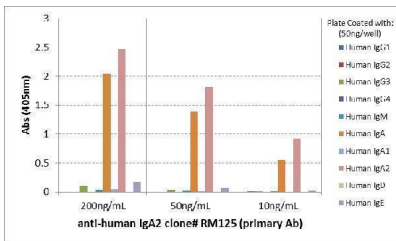
IHC result Immunohistochemistry of human tonsil tissue using anti-human IgA2 antibody RM125



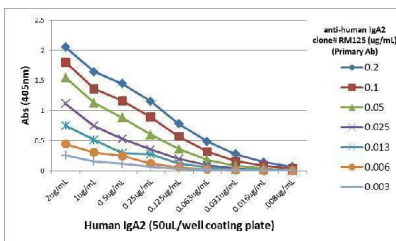
ELISA result showing specificity Sandwich ELISA using RM125 as the capture antibody (100ng/well), and Biotinylated anti-human light chains (+) antibody RM129 as the detection antibody, followed by an alkaline phosphatase conjugated streptavidin



ELISA result showing specificity Sandwich ELISA using RM125 as the capture antibody (100ng/well), and Biotinylated anti-human light chains (+) antibody RM129 as the detection antibody, followed by an alkaline phosphatase conjugated streptavidin



ELISA result showing specificity ELISA of human immunoglobulins shows RM125 only reacted to human IgA2. No cross reactivity with human IgA1, IgG, IgM, IgD, or IgE. The plate was coated with 50 ng/well of different immunoglobulins. 200 ng/mL, 50ng/mL, or 10 ng/mL of RM125 was used as the primary antibody. An alkaline phosphatase conjugated anti-rabbit IgG as the secondary antibody.



ELISA result showing specificity A titer ELISA using RM125. The plate was coated with different amounts of human IgA2. A serial dilution of RM125 was used as the primary antibody. An alkaline phosphatase conjugated anti-rabbit IgG as the secondary antibody.

Submit a product review to [Biocompare.com](https://www.biocompare.com)

Submit a review of this product to [Biocompare.com](https://www.biocompare.com) to receive a \$20 Amazon.com giftcard! Your reviews help your fellow scientists make the right decisions. Thank you for your contribution.



Anti-Human IgA2 IGHA2 Rabbit Monoclonal Antibody, Clone#RM125

For Research Use Only. Not for use in diagnostic procedures.