

Anti-Human IgG4 IGHG4 Rabbit Monoclonal Antibody, Clone#RM120

Catalog Number: M11385-2

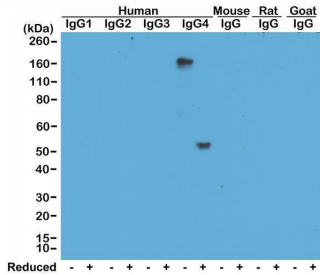
Overview

Product Name	Anti-Human IgG4 IGHG4 Rabbit Monoclonal Antibody, Clone#RM120
Reactive Species	Human
Description	Boster Bio Anti-Human IgG4 IGHG4 Rabbit Monoclonal Antibody, Clone#RM120 (Catalog # M11385-2). Tested in ELISA, ICC, IHC, Flow Cytometry applications. This antibody reacts with Human.
Application	ELISA, Flow Cytometry, IHC, ICC
Clonality	Monoclonal RM120
Formulation	50% Glycerol/PBS with 1% stabilizing protein and 0.09% sodium azide This antibody is supplied in a stabilized formulation. Compatibility with conjugation reactions depends on the chemistry of the conjugation method used. For conjugation methods that are not compatible with the stabilizing components present in this formulation, a carrier-free antibody format is required.
Storage Instructions	Store at -20°C for one year. Avoid repeated freeze-thaw cycles.
Host	Rabbit
Uniprot ID	P01861

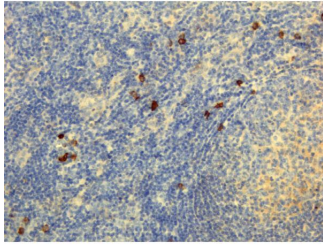
Technical Details

Immunogen	Peptide corresponding to the hinge region of Human IgG4
Cross Reactivity	Reacts to the heavy chain of human IgG4, RM120 does not cross-react to any other IgG subclasses (IgG1, IgG2, IgG3), and shows no cross-reactivity to IgM, IgA, IgD, IgE. RM120 does not react to monkey (Cyno or Rhesus) IgG, mouse IgG, rat IgG, or goat IgG.
Isotype	Rabbit IgG
Form	Liquid
Concentration	1 mg/mL
Purification	Protein A affinity purified from an animal origin-free culture supernatant
Suggested Dilutions	ELISA: 50ng/well – 200ng/well (for Capture) 0.05ug/mL – 0.2ug/mL (for Detection) WB: 0.5 ug/mL – 2 ug/mL Flow Cytometry (FC): 1ug/mL-4ug/mL.

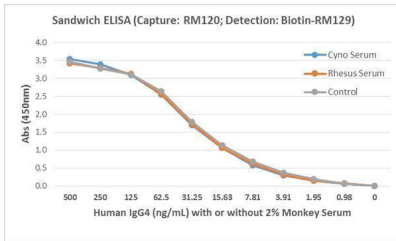
Anti-Human IgG4 IGHG4 Rabbit Monoclonal Antibody, Clone#RM120 (M11385-2) Images



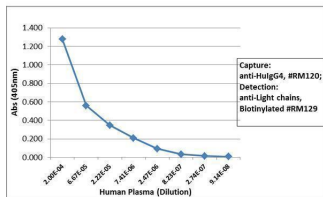
Western Blotting result Western Blot of human, mouse, rat, and goat IgG shows RM120 reacted to human IgG4 both whole molecule (~150kDa, non-reduced) and heavy chain (~50kDa, reduced). No cross reactivity with other isotype of human IgG, and mouse, rat, or goat IgG.



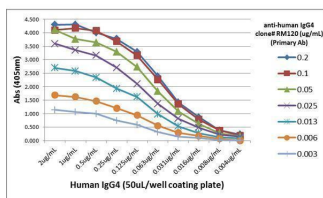
IHC result Immunohistochemistry of human lymphoid tissue using anti-human IgG4 antibody RM120.

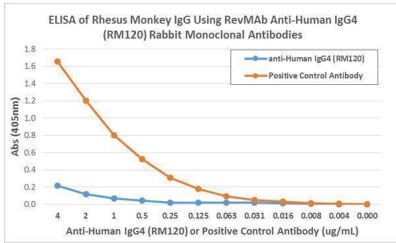


ELISA result showing specificity Detection of human IgG4 in monkey serum. Sandwich ELISA using RM120 as the capture antibody, and biotinylated anti-human light chains (or) antibody RM129 as the detection antibody, followed by a HRP conjugated streptavidin.

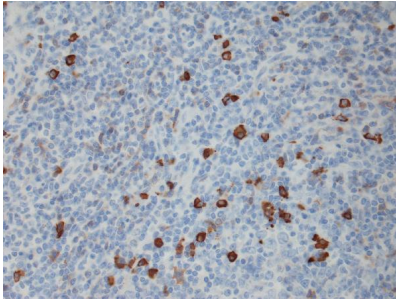


ELISA result showing specificity Sandwich ELISA using RM120 as the capture antibody, and Biotinylated anti-human light chains (+) antibody RM129 as the detection antibody, followed by an AP conjugated streptavidin.





ELISA result showing specificity. ELISA showing RM120 does not react to monkey IgG. The plate was coated with Rhesus monkey IgG. A serial dilution of RM120 and a monkey IgG binding antibody (positive control) was used as the detection antibody.



IHC result. Immunohistochemical staining of FFPE Tonsil tissue sections using Anti-Human IgG4 antibody RM120 at a 1:50,000 dilution.

Submit a product review to [Biocompare.com](https://www.biocompare.com)

Submit a review of this product to [Biocompare.com](https://www.biocompare.com) to receive a \$20 Amazon.com giftcard! Your reviews help your fellow scientists make the right decisions. Thank you for your contribution.



Anti-Human IgG4 IGHG4 Rabbit Monoclonal Antibody, Clone#RM120

For Research Use Only. Not for use in diagnostic procedures.