

Anti-Centrin 1 (CETN1) Mouse Monoclonal Antibody [Clone ID: OTI1E1]

Catalog Number: M11408

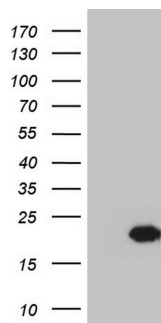
Overview

Product Name	Anti-Centrin 1 (CETN1) Mouse Monoclonal Antibody [Clone ID: OTI1E1]
Reactive Species	Human, Mouse, Rat
Description	Boster Bio CETN1 mouse monoclonal antibody, clone OTI1E1 (formerly 1E1). Catalog# M11408. Tested in IHC, WB. This antibody reacts with Human, Mouse, Rat.
Application	IHC, WB
Clonality	Monoclonal OTI1E1
Formulation	PBS (pH 7.3) containing 1% stabilizing protein, 50% glycerol and 0.02% sodium azide. This antibody is supplied in a stabilized formulation. Compatibility with conjugation reactions depends on the chemistry of the conjugation method used. For conjugation methods that are not compatible with the stabilizing components present in this formulation, a carrier-free antibody format is required.
Storage Instructions	Store at -20°C as received.
Host	Mouse
Uniprot ID	Q12798

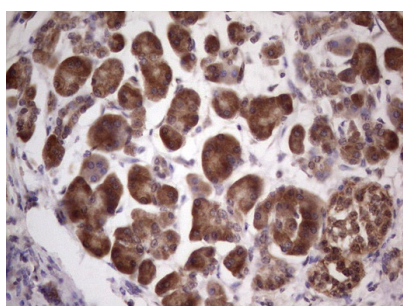
Technical Details

Immunogen	Full length human recombinant protein of human CETN1 (NP_004057) produced in E.coli.
Isotype	IgG2a
Concentration	1 mg/ml
Purification	Purified from mouse ascites fluids or tissue culture supernatant by affinity chromatography (protein A/G)
Suggested Dilutions	WB 1:2000 IHC 1:150

Anti-Centrin 1 (CETN1) Mouse Monoclonal Antibody [Clone ID: OTI1E1] (M11408) Images



HEK293T cells were transfected with the pCMV6-ENTRY control (Left lane) or pCMV6-ENTRY CETN1 (Right lane) cDNA for 48 hrs and lysed. Equivalent amounts of cell lysates (5 ug per lane) were separated by SDS-PAGE and immunoblotted with anti-CETN1.



Immunohistochemical staining of paraffin-embedded Carcinoma of Human pancreas tissue using anti-CETN1 mouse monoclonal antibody. (Heat-induced epitope retrieval by 1 mM EDTA in 10mM Tris)

Submit a product review to Biocompare.com

Submit a review of this product to Biocompare.com to receive a \$20 Amazon.com giftcard! Your reviews help your fellow scientists make the right decisions. Thank you for your contribution.



Anti-Centrin 1 (CETN1) Mouse Monoclonal Antibody [Clone ID: OTI1E1]

For Research Use Only. Not for use in diagnostic procedures.