

## Anti-RPAIN Mouse Monoclonal Antibody [Clone ID: OTI6A7]

Catalog Number: M11439

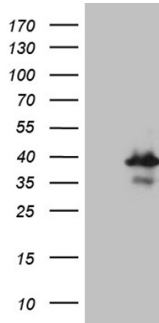
### Overview

Product Name	Anti-RPAIN Mouse Monoclonal Antibody [Clone ID: OTI6A7]
Reactive Species	Human
Description	Boster Bio RPAIN mouse monoclonal antibody, clone OTI6A7. Catalog# M11439. Tested in IHC, WB. This antibody reacts with Human.
Application	IHC, WB
Clonality	Monoclonal OTI6A7
Formulation	PBS (pH 7.3) containing 1% stabilizing protein, 50% glycerol and 0.02% sodium azide. This antibody is supplied in a stabilized formulation. Compatibility with conjugation reactions depends on the chemistry of the conjugation method used. For conjugation methods that are not compatible with the stabilizing components present in this formulation, a carrier-free antibody format is required.
Storage Instructions	Store at -20°C as received.
Host	Mouse
Uniprot ID	Q86UA6

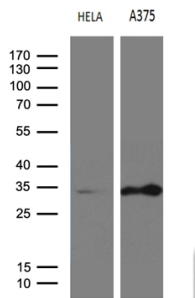
### Technical Details

Immunogen	Full length human recombinant protein of human RPAIN (NP_001028174) produced in HEK293T cell.
Isotype	IgG2b
Concentration	1 mg/ml
Purification	Purified from mouse ascites fluids or tissue culture supernatant by affinity chromatography (protein A/G)
Suggested Dilutions	WB 1:500~2000 IHC 1:500

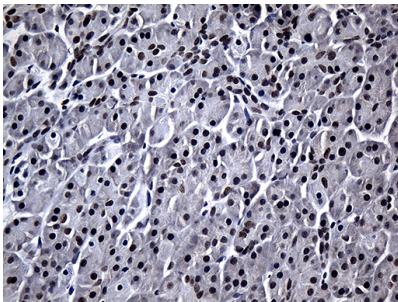
## Anti-RPAIN Mouse Monoclonal Antibody [Clone ID: OTI6A7] (M11439) Images



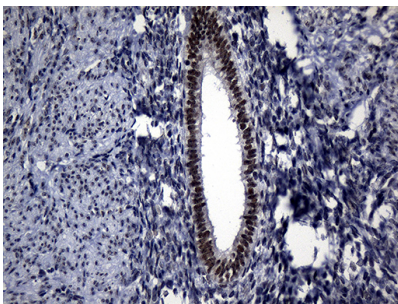
HEK293T cells were transfected with the pCMV6-ENTRY control (Left lane) or pCMV6-ENTRY RPAIN (Right lane) cDNA for 48 hrs and lysed. Equivalent amounts of cell lysates (5 ug per lane) were separated by SDS-PAGE and immunoblotted with anti-RPAIN (1:2000).



Western blot analysis of extracts (35ug) from 2 different cell lines by using anti-RPAIN monoclonal antibody (1:500).

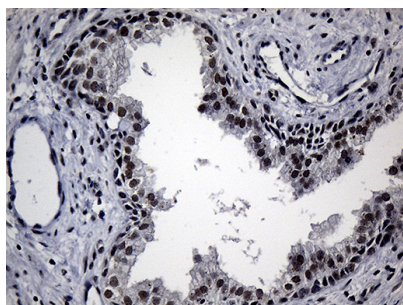


Immunohistochemical staining of paraffin-embedded Human pancreas tissue within the normal limits using anti-RPAIN mouse monoclonal antibody. (Heat-induced epitope retrieval by 1mM EDTA in 10mM Tris buffer (pH8.5) at 120Å°C for 3min)



Immunohistochemical staining of paraffin-embedded Human endometrium tissue within the normal limits using anti-RPAIN mouse monoclonal antibody. (Heat-induced epitope retrieval by 1mM EDTA in 10mM Tris buffer (pH8.5) at 120Å°C for 3min)

Immunohistochemical staining of paraffin-embedded Human prostate tissue within the normal limits using anti-RPAIN mouse monoclonal antibody. (Heat-induced epitope retrieval by 1mM EDTA in 10mM Tris buffer (pH8.5) at 120Å°C for 3min)



## Submit a product review to Biocompare.com

Submit a review of this product to Biocompare.com to receive a \$20 Amazon.com giftcard! Your reviews help your fellow scientists make the right decisions. Thank you for your contribution.



Anti-RPAIN Mouse Monoclonal Antibody [Clone ID: OTI6A7]

For Research Use Only. Not for use in diagnostic procedures.