

Anti-Cytochrome C Oxidase subunit VIc (COX6C) Mouse Monoclonal Antibody [Clone ID: OTI4B11]

Catalog Number: M11443

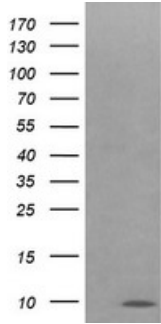
Overview

Product Name	Anti-Cytochrome C Oxidase subunit VIc (COX6C) Mouse Monoclonal Antibody [Clone ID: OTI4B11]
Reactive Species	Human
Description	Boster Bio COX6C mouse monoclonal antibody, clone OTI4B11 (formerly 4B11). Catalog# M11443. Tested in IF, IHC, WB. This antibody reacts with Human.
Application	IF, IHC, WB
Clonality	Monoclonal OTI4B11
Formulation	PBS (pH 7.3) containing 1% stabilizing protein, 50% glycerol and 0.02% sodium azide. This antibody is supplied in a stabilized formulation. Compatibility with conjugation reactions depends on the chemistry of the conjugation method used. For conjugation methods that are not compatible with the stabilizing components present in this formulation, a carrier-free antibody format is required.
Storage Instructions	Store at -20°C as received.
Host	Mouse
Uniprot ID	P09669

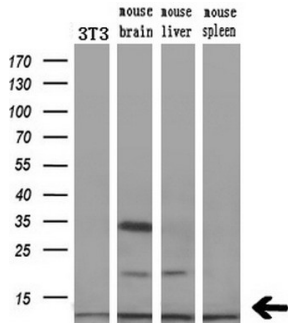
Technical Details

Immunogen	Full length human recombinant protein of human COX6C (NP_004365) produced in HEK293T cell.
Isotype	IgG2b
Concentration	1 mg/ml
Purification	Purified from mouse ascites fluids or tissue culture supernatant by affinity chromatography (protein A/G)
Suggested Dilutions	WB 1:4000 IHC 1:150 IF 1:100

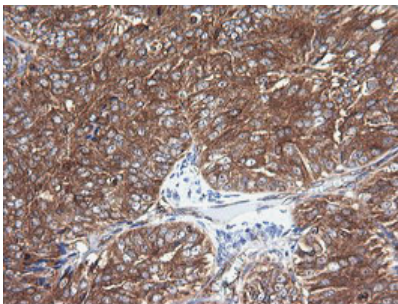
Anti-Cytochrome C Oxidase subunit VIc (COX6C) Mouse Monoclonal Antibody [Clone ID: OTI4B11] (M11443) Images



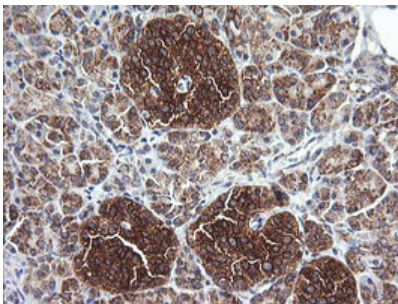
HEK293T cells were transfected with the pCMV6-ENTRY control (Left lane) or pCMV6-ENTRY COX6C (Right lane) cDNA for 48 hrs and lysed. Equivalent amounts of cell lysates (5 ug per lane) were separated by SDS-PAGE and immunoblotted with anti-COX6C.



Western blot analysis of extracts (10ug) from a mouse cell line and 3 different mouse tissues by using anti-COX6C monoclonal antibody (1:200).

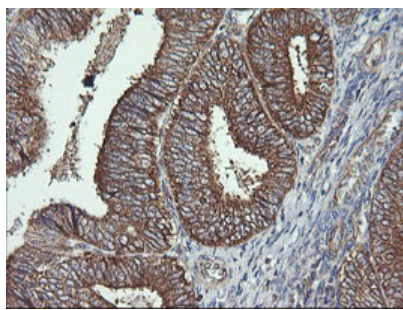


Immunohistochemical staining of paraffin-embedded Adenocarcinoma of Human ovary tissue using anti-COX6C mouse monoclonal antibody. (Heat-induced epitope retrieval by 10mM citric buffer)

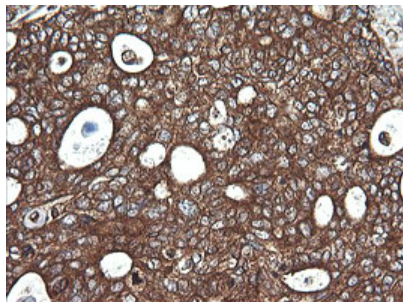


Immunohistochemical staining of paraffin-embedded Human pancreas tissue within the normal limits using anti-COX6C mouse monoclonal antibody. (Heat-induced epitope retrieval by 10mM citric buffer)

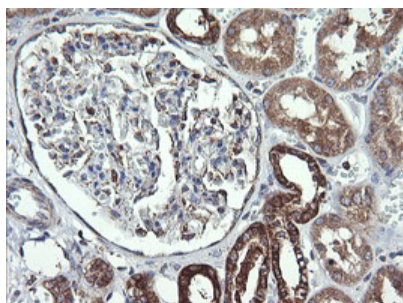
Immunohistochemical staining of paraffin-embedded Adenocarcinoma of Human endometrium tissue using anti-COX6C mouse monoclonal antibody. (Heat-induced epitope retrieval by 10mM citric buffer)



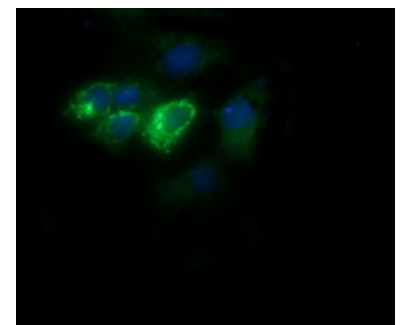
Immunohistochemical staining of paraffin-embedded Adenocarcinoma of Human breast tissue using anti-COX6C mouse monoclonal antibody. (Heat-induced epitope retrieval by 10mM citric buffer)



Immunohistochemical staining of paraffin-embedded Human Kidney tissue within the normal limits using anti-COX6C mouse monoclonal antibody. (Heat-induced epitope retrieval by 10mM citric buffer)



Anti-COX6C mouse monoclonal antibody (M11443) immunofluorescent staining of COS7 cells transiently transfected by pCMV6-ENTRY COX6C.



Immunofluorescent staining of HeLa cells using anti-COX6C mouse monoclonal antibody (M11443).

Submit a review of this product to Biocompare.com to receive a \$20 Amazon.com giftcard! Your reviews help your fellow scientists make the right decisions. Thank you for your contribution.



Anti-Cytochrome C Oxidase subunit VIc (COX6C) Mouse Monoclonal Antibody [Clone ID: OTI4B11]

For Research Use Only. Not for use in diagnostic procedures.