

## Anti-DNAAF11 Mouse Monoclonal Antibody [Clone ID: OTI7E9]

Catalog Number: M11479

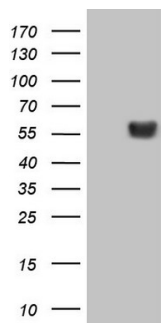
### Overview

Product Name	Anti-DNAAF11 Mouse Monoclonal Antibody [Clone ID: OTI7E9]
Reactive Species	Human
Description	Boster Bio LRRC6 mouse monoclonal antibody, clone OTI7E9 (formerly 7E9). Catalog# M11479. Tested in IHC, WB. This antibody reacts with Human.
Application	IHC, WB
Clonality	Monoclonal OTI7E9
Formulation	PBS (pH 7.3) containing 1% stabilizing protein, 50% glycerol and 0.02% sodium azide. This antibody is supplied in a stabilized formulation. Compatibility with conjugation reactions depends on the chemistry of the conjugation method used. For conjugation methods that are not compatible with the stabilizing components present in this formulation, a carrier-free antibody format is required.
Storage Instructions	Store at -20°C as received.
Host	Mouse
Uniprot ID	Q86X45

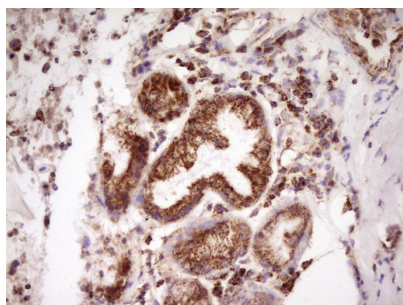
### Technical Details

Immunogen	Full length human recombinant protein of human LRRC6 (NP_036604) produced in HEK293T cell.
Isotype	IgG1
Concentration	1 mg/ml
Purification	Purified from mouse ascites fluids or tissue culture supernatant by affinity chromatography (protein A/G)
Suggested Dilutions	IHC 1:150

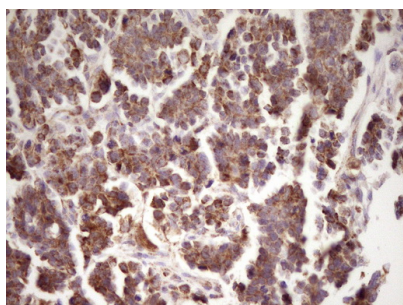
## Anti-DNAAF11 Mouse Monoclonal Antibody [Clone ID: OTI7E9] (M11479) Images



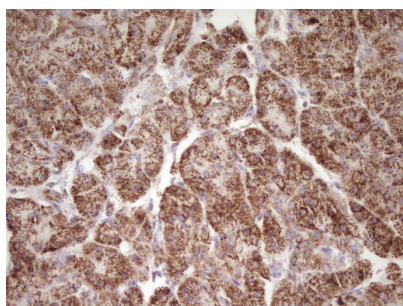
HEK293T cells were transfected with the pCMV6-ENTRY control (Left lane) or pCMV6-ENTRY LRRC6 (Right lane) cDNA for 48 hrs and lysed. Equivalent amounts of cell lysates (5 ug per lane) were separated by SDS-PAGE and immunoblotted with anti-LRRC6.



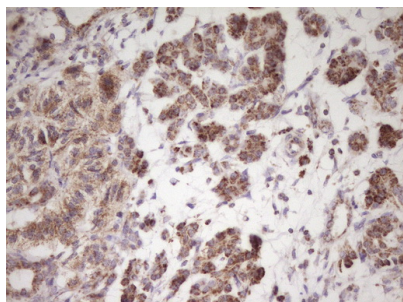
Immunohistochemical staining of paraffin-embedded Carcinoma of Human lung tissue using anti-LRRC6 mouse monoclonal antibody. (Heat-induced epitope retrieval by 1 mM EDTA in 10mM Tris)



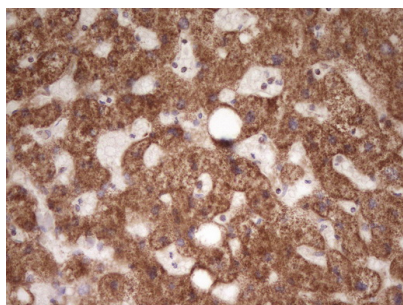
Immunohistochemical staining of paraffin-embedded Adenocarcinoma of Human ovary tissue using anti-LRRC6 mouse monoclonal antibody. (Heat-induced epitope retrieval by 1 mM EDTA in 10mM Tris)



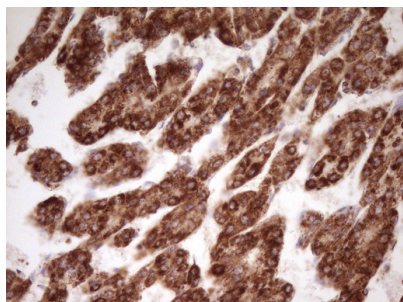
Immunohistochemical staining of paraffin-embedded Human pancreas tissue within the normal limits using anti-LRRC6 mouse monoclonal antibody. (Heat-induced epitope retrieval by 1 mM EDTA in 10mM Tris)



Immunohistochemical staining of paraffin-embedded Carcinoma of Human pancreas tissue using anti-LRRC6 mouse monoclonal antibody. (Heat-induced epitope retrieval by 1 mM EDTA in 10mM Tris)



Immunohistochemical staining of paraffin-embedded Human liver tissue within the normal limits using anti-LRRC6 mouse monoclonal antibody. (Heat-induced epitope retrieval by 1 mM EDTA in 10mM Tris)



Immunohistochemical staining of paraffin-embedded Carcinoma of Human liver tissue using anti-LRRC6 mouse monoclonal antibody. (Heat-induced epitope retrieval by 1 mM EDTA in 10mM Tris)

## Submit a product review to Biocompare.com

Submit a review of this product to Biocompare.com to receive a \$20 Amazon.com giftcard! Your reviews help your fellow scientists make the right decisions. Thank you for your contribution.



Anti-DNAAF11 Mouse Monoclonal Antibody [Clone ID: OTI7E9]

For Research Use Only. Not for use in diagnostic procedures.