

Anti-SDHAF1 Mouse Monoclonal Antibody [Clone ID: OTI1E6]

Catalog Number: M11628

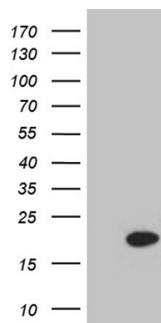
Overview

| | |
|----------------------|--|
| Product Name | Anti-SDHAF1 Mouse Monoclonal Antibody [Clone ID: OTI1E6] |
| Reactive Species | Human |
| Description | Boster Bio SDHAF1 mouse monoclonal antibody, clone OTI1E6. Catalog# M11628. Tested in WB. This antibody reacts with Human. |
| Application | WB |
| Clonality | Monoclonal OTI1E6 |
| Formulation | PBS (pH 7.3) containing 1% stabilizing protein, 50% glycerol and 0.02% sodium azide. This antibody is supplied in a stabilized formulation. Compatibility with conjugation reactions depends on the chemistry of the conjugation method used. For conjugation methods that are not compatible with the stabilizing components present in this formulation, a carrier-free antibody format is required. |
| Storage Instructions | Store at -20°C as received. |
| Host | Mouse |
| Uniprot ID | A6NFY7 |

Technical Details

| | |
|---------------------|---|
| Immunogen | Full length human recombinant protein of human SDHAF1 (NP_001036096) produced in HEK293T cell. |
| Isotype | IgG1 |
| Concentration | 1 mg/ml |
| Purification | Purified from mouse ascites fluids or tissue culture supernatant by affinity chromatography (protein A/G) |
| Suggested Dilutions | WB 1:2000 |

Anti-SDHAF1 Mouse Monoclonal Antibody [Clone ID: OTI1E6] (M11628) Images



HEK293T cells were transfected with the pCMV6-ENTRY control (Left lane) or pCMV6-ENTRY SDHAF1 (Right lane) cDNA for 48 hrs and lysed. Equivalent amounts of cell lysates (5 ug per lane) were separated by SDS-PAGE and immunoblotted with anti-SDHAF1 (1:2000).

Submit a product review to Biocompare.com

Submit a review of this product to Biocompare.com to receive a \$20 Amazon.com giftcard! Your reviews help your fellow scientists make the right decisions. Thank you for your contribution.



Anti-SDHAF1 Mouse Monoclonal Antibody [Clone ID: OTI1E6]

For Research Use Only. Not for use in diagnostic procedures.