

Anti-LACTB2 Mouse Monoclonal Antibody [Clone ID: OTI2F9]

Catalog Number: M11709

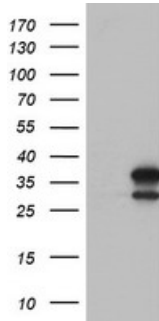
Overview

Product Name	Anti-LACTB2 Mouse Monoclonal Antibody [Clone ID: OTI2F9]
Reactive Species	Dog, Human, Monkey
Description	Boster Bio LACTB2 mouse monoclonal antibody, clone OTI2F9 (formerly 2F9). Catalog# M11709. Tested in FC, IHC, WB. This antibody reacts with Human, Monkey, Dog.
Application	Flow Cytometry, IHC, WB
Clonality	Monoclonal OTI2F9
Formulation	PBS (pH 7.3) containing 1% stabilizing protein, 50% glycerol and 0.02% sodium azide. This antibody is supplied in a stabilized formulation. Compatibility with conjugation reactions depends on the chemistry of the conjugation method used. For conjugation methods that are not compatible with the stabilizing components present in this formulation, a carrier-free antibody format is required.
Storage Instructions	Store at -20°C as received.
Host	Mouse
Uniprot ID	Q53H82

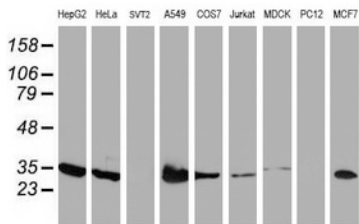
Technical Details

Immunogen	Human recombinant protein fragment corresponding to amino acids 78-288 of human LACTB2 (NP_057111) produced in HEK293T cell.
Isotype	IgG1
Concentration	1 mg/ml
Purification	Purified from mouse ascites fluids or tissue culture supernatant by affinity chromatography (protein A/G)
Suggested Dilutions	WB 1:500~2000 IHC 1:150 Flow Cytometry 1:100

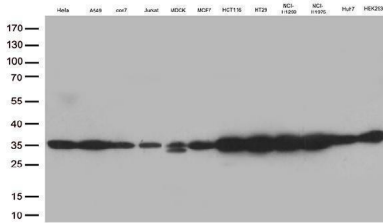
Anti-LACTB2 Mouse Monoclonal Antibody [Clone ID: OTI2F9] (M11709) Images



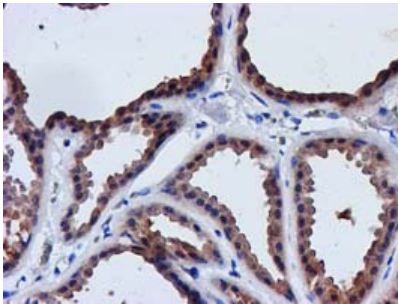
HEK293T cells were transfected with the pCMV6-ENTRY control (Left lane) or pCMV6-ENTRY LACTB2 (Right lane) cDNA for 48 hrs and lysed. Equivalent amounts of cell lysates (5 ug per lane) were separated by SDS-PAGE and immunoblotted with anti-LACTB2.



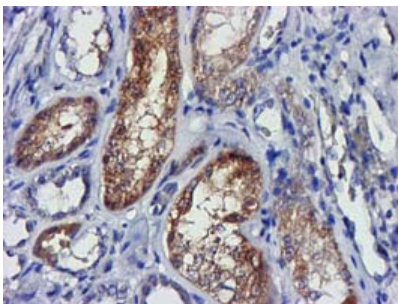
Western blot analysis of extracts (35ug) from 9 different cell lines by using anti-LACTB2 monoclonal antibody.



Western blot analysis of extracts (35ug) from 12 cell line lysates by using anti-LACTB2 monoclonal antibody (1:500).

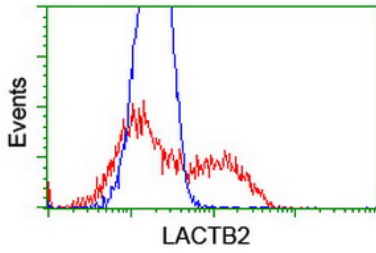


Immunohistochemical staining of paraffin-embedded Human breast tissue within the normal limits using anti-LACTB2 mouse monoclonal antibody. (Heat-induced epitope retrieval by 10mM citric buffer)

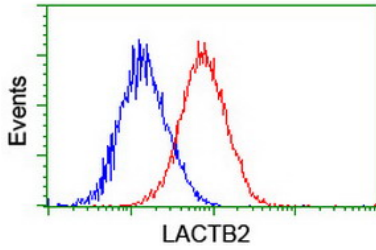


Immunohistochemical staining of paraffin-embedded Human Kidney tissue within the normal limits using anti-LACTB2 mouse monoclonal antibody. (Heat-induced epitope retrieval by 10mM citric buffer)

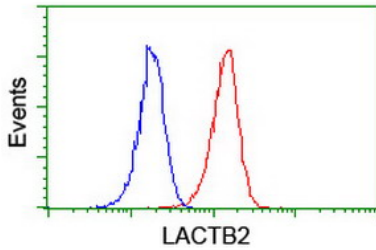
HEK293T cells transfected with either LACTB2 (Myc-DDK-



tagged) overexpress plasmid (Red) or empty vector control plasmid (Blue) were immunostained by anti-LACTB2 antibody (M11709)



Flow cytometric Analysis of HeLa cells



Flow cytometric Analysis of Jurkat cells

Submit a product review to Biocompare.com

Submit a review of this product to Biocompare.com to receive a \$20 Amazon.com giftcard! Your reviews help your fellow scientists make the right decisions. Thank you for your contribution.



Anti-LACTB2 Mouse Monoclonal Antibody [Clone ID: OT12F9]

For Research Use Only. Not for use in diagnostic procedures.