

Anti-PPWD1 Mouse Monoclonal Antibody [Clone ID: OTI1B8]

Catalog Number: M11798-1

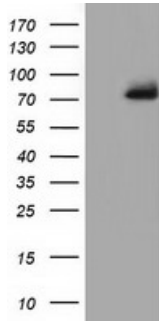
Overview

Product Name	Anti-PPWD1 Mouse Monoclonal Antibody [Clone ID: OTI1B8]
Reactive Species	Human, Mouse, Rat
Description	Boster Bio PPWD1 mouse monoclonal antibody, clone OTI1B8 (formerly 1B8). Catalog# M11798-1. Tested in FC, IF, IHC, WB. This antibody reacts with Human, Mouse, Rat.
Application	Flow Cytometry, IF, IHC, WB
Clonality	Monoclonal OTI1B8
Formulation	PBS (pH 7.3) containing 1% stabilizing protein, 50% glycerol and 0.02% sodium azide. This antibody is supplied in a stabilized formulation. Compatibility with conjugation reactions depends on the chemistry of the conjugation method used. For conjugation methods that are not compatible with the stabilizing components present in this formulation, a carrier-free antibody format is required.
Storage Instructions	Store at -20°C as received.
Host	Mouse
Uniprot ID	Q96BP3

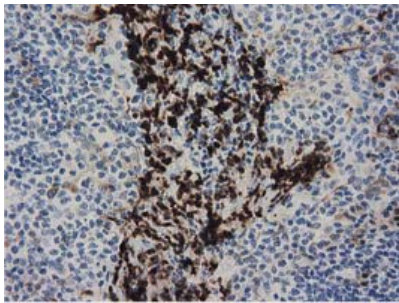
Technical Details

Immunogen	Full length human recombinant protein of human PPWD1 (NP_056157) produced in HEK293T cell.
Isotype	IgG1
Concentration	0.68 mg/ml
Purification	Purified from mouse ascites fluids or tissue culture supernatant by affinity chromatography (protein A/G)
Suggested Dilutions	WB 1:200~500 IF 1:100 Flow Cytometry 1:100 IHC: 1:150

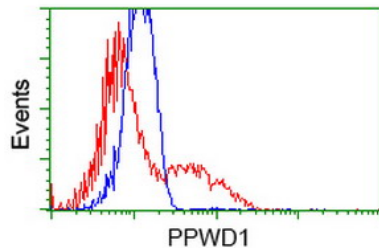
Anti-PPWD1 Mouse Monoclonal Antibody [Clone ID: OTI1B8] (M11798-1) Images



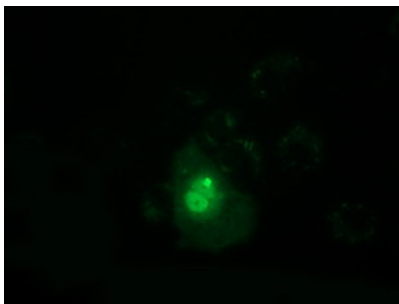
HEK293T cells were transfected with the pCMV6-ENTRY control (Left lane) or pCMV6-ENTRY PPWD1 (Right lane) cDNA for 48 hrs and lysed. Equivalent amounts of cell lysates (5 ug per lane) were separated by SDS-PAGE and immunoblotted with anti-PPWD1.



Immunohistochemical staining of paraffin-embedded Human lymph node tissue within the normal limits using anti-PPWD1 mouse monoclonal antibody. (M11798-1)



HEK293T cells transfected with either PPWD1 (Myc-DDK-tagged) overexpress plasmid (Red) or empty vector control plasmid (Blue) were immunostained by anti-PPWD1 antibody (M11798-1)



Anti-PPWD1 mouse monoclonal antibody (M11798-1) immunofluorescent staining of COS7 cells transiently transfected by pCMV6-ENTRY PPWD1.

Submit a product review to Biocompare.com

Submit a review of this product to Biocompare.com to receive a \$20 Amazon.com giftcard! Your reviews help your fellow scientists make the right decisions. Thank you for your contribution.



Anti-PPWD1 Mouse Monoclonal Antibody [Clone ID: OTI1B8]

For Research Use Only. Not for use in diagnostic procedures.