

Anti-BIN3 Monoclonal Antibody

Catalog Number: M11817

About BIN3

BIN-3 encodes an evolutionarily conserved and ubiquitously expressed member of the BAR superfamily of curved membrane and GTPase-binding proteins implicated in signal transduction and vesicular trafficking. In humans, Bin3 maps to chromosome 8p21.3, a region widely implicated in cancer suppression that is often deleted in non-Hodgkin's lymphomas and various epithelial tumors. Study in mouse suggests that homozygous inactivation of Bin3 causes cataracts and an increased susceptibility to lymphomas during aging.

Overview

Product Name	Anti-BIN3 Monoclonal Antibody
Reactive Species	Mouse
Description	Boster Bio Anti-BIN3 Monoclonal Antibody (Catalog # M11817). Tested in ELISA, WB applications. This antibody reacts with Mouse.
Application	ELISA, IP, WB
Clonality	Monoclonal Clone: 3A4
Formulation	0.02 M Potassium Phosphate, 0.15 M Sodium Chloride, pH 7.2, 0.01% (w/v) Sodium Azide
Storage Instructions	Store vial at -20°C prior to opening. Aliquot contents and freeze at -20°C or below for extended storage. Avoid cycles of freezing and thawing. Centrifuge product if not completely clear after standing at room temperature. This product is stable for several weeks at 4°C as an undiluted liquid. Dilute only prior to immediate use. Expiration date is one (1) year from date of opening. (Ship on dry ice.)
Host	Mouse
Uniprot ID	Q9NQY0

Technical Details

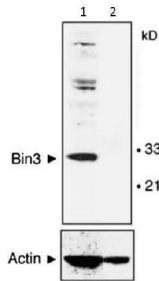
Immunogen	Anti-BIN3 (MOUSE) Monoclonal Antibody was produced in mouse by repeated immunizations with a full length human BIN3 recombinant protein followed by hybridoma development.
Predicted Reactive Species	Chimpanzee, Macaque
Isotype	IgG1
Form	Liquid (sterile filtered)
Concentration	1.0 mg/mL by UV absorbance at 280 nm
Purification	Anti-BIN3 was purified from clarified mouse ascetic fluid by Protein A chromatography followed by extensive dialysis against the buffer stated above. BIN3 antibody is specific for human BIN3 protein.

A BLAST analysis was used to suggest cross-reactivity with BIN3 from human and mouse sources based on 100% homology with the immunizing sequence. Cross-reactivity with BIN3 from other sources has not been determined.

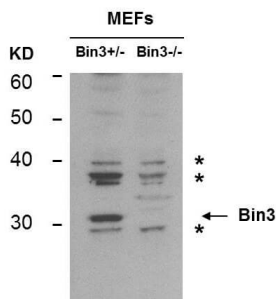
Suggested Dilutions

ELISA: 1:5000 - 1:50000
IP: 10-100 μ L
WB: 1:500-1:1500
Anti-BIN3 antibody has been tested for use in ELISA, Western Blot, and IP. Specific conditions for reactivity should be optimized by the end user.

Anti-BIN3 Monoclonal Antibody (M11817) Images



Western Blot of Mouse Anti-BIN3 antibody. Lane 1: MEF cells wild type. Lane 2: MEF cells null mice. Load: 35 μ g per lane. Primary antibody: BIN3 antibody overnight at 4°C. Secondary antibody: IRDye800™ mouse secondary antibody for 45 min at RT. Block: 5% BLOTTO overnight at 4°C. Predicted/Observed size: 29.7 kDa, 30 kDa for BIN-3. Other band(s): non-specific.



Western Blot of Mouse anti-BIN3 antibody. Lane 1: MEF lysate BIN3 +/- . Lane 2: MEF lysate BIN3 -/- . Load: 35 μ g per lane. Primary antibody: BIN-3 antibody at 1:400 for overnight at 4°C. Secondary antibody: IRDye800™ mouse secondary antibody at 1:10,000 for 45 min at RT. Block: 5% BLOTTO overnight at 4°C. Predicted/Observed size: 29.7 kDa, 31 kDa for BIN 3. Other band(s): * non-specifics.

Submit a product review to [Biocompare.com](https://www.biocompare.com)

Submit a review of this product to [Biocompare.com](https://www.biocompare.com) to receive a \$20 Amazon.com giftcard! Your reviews help your fellow scientists make the right decisions. Thank you for your contribution.



Anti-BIN3 Monoclonal Antibody

For Research Use Only. Not for use in diagnostic procedures.