

## Anti-Meis homeobox 3 (MEIS3) Mouse Monoclonal Antibody [Clone ID: OTI1B2]

Catalog Number: M11850

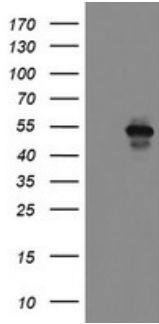
### Overview

Product Name	Anti-Meis homeobox 3 (MEIS3) Mouse Monoclonal Antibody [Clone ID: OTI1B2]
Reactive Species	Human, Mouse, Rat
Description	Boster Bio MEIS3 (Meis homeobox 3) mouse monoclonal antibody, clone OTI1B2 (formerly 1B2). Catalog# M11850. Tested in FC, IHC, WB. This antibody reacts with Human, Mouse, Rat.
Application	Flow Cytometry, IHC, WB
Clonality	Monoclonal OTI1B2
Formulation	PBS (pH 7.3) containing 1% stabilizing protein, 50% glycerol and 0.02% sodium azide. This antibody is supplied in a stabilized formulation. Compatibility with conjugation reactions depends on the chemistry of the conjugation method used. For conjugation methods that are not compatible with the stabilizing components present in this formulation, a carrier-free antibody format is required.
Storage Instructions	Store at -20°C as received.
Host	Mouse
Uniprot ID	Q99687

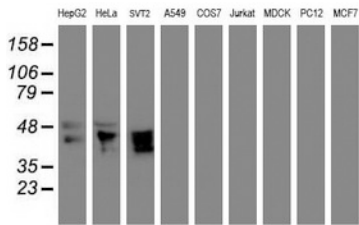
### Technical Details

Immunogen	Human recombinant protein fragment corresponding to amino acids 1-261 of human MEIS3 (NP_064545) produced in E.coli.
Isotype	IgG1
Concentration	1 mg/ml
Purification	Purified from mouse ascites fluids or tissue culture supernatant by affinity chromatography (protein A/G)
Suggested Dilutions	WB 1:500~2000 IHC 1:150 Flow Cytometry 1:100

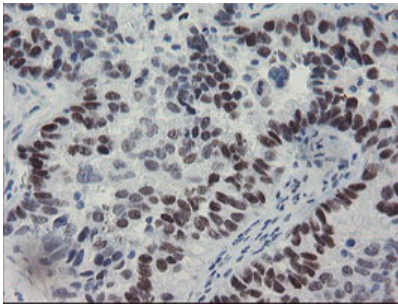
## Anti-Meis homeobox 3 (MEIS3) Mouse Monoclonal Antibody [Clone ID: OTI1B2] (M11850) Images



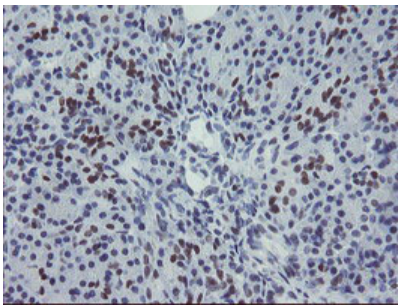
HEK293T cells were transfected with the pCMV6-ENTRY control (Left lane) or pCMV6-ENTRY MEIS3 (Right lane) cDNA for 48 hrs and lysed. Equivalent amounts of cell lysates (5 ug per lane) were separated by SDS-PAGE and immunoblotted with anti-MEIS3.



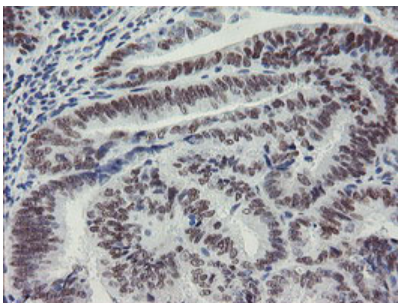
Western blot analysis of extracts (35ug) from 9 different cell lines by using anti-MEIS3 monoclonal antibody (HepG2: human; HeLa: human; SVT2: mouse; A549: human; COS7: monkey; Jurkat: human; MDCK: canine; PC12: rat; MCF7: human).



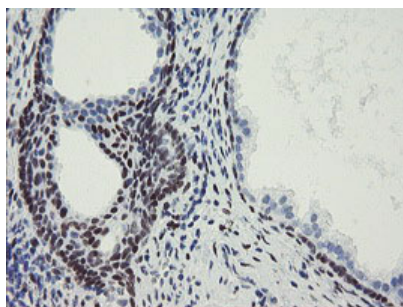
Immunohistochemical staining of paraffin-embedded Adenocarcinoma of Human ovary tissue using anti-MEIS3 mouse monoclonal antibody. (Heat-induced epitope retrieval by 10mM citric buffer)



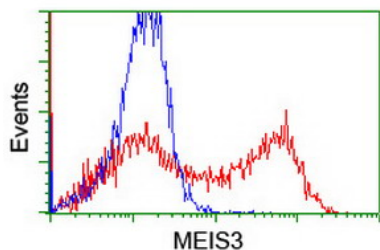
Immunohistochemical staining of paraffin-embedded Human pancreas tissue within the normal limits using anti-MEIS3 mouse monoclonal antibody. (Heat-induced epitope retrieval by 10mM citric buffer)



Immunohistochemical staining of paraffin-embedded Adenocarcinoma of Human endometrium tissue using anti-MEIS3 mouse monoclonal antibody. (Heat-induced epitope retrieval by 10mM citric buffer)



Immunohistochemical staining of paraffin-embedded Human prostate tissue within the normal limits using anti-MEIS3 mouse monoclonal antibody. (Heat-induced epitope retrieval by 10mM citric buffer)



HEK293T cells transfected with either MEIS3 (Myc-DDK-tagged) overexpress plasmid (Red) or empty vector control plasmid (Blue) were immunostained by anti-MEIS3 antibody (M11850)

## Submit a product review to Biocompare.com

Submit a review of this product to Biocompare.com to receive a \$20 Amazon.com giftcard! Your reviews help your fellow scientists make the right decisions. Thank you for your contribution.



Anti-Meis homeobox 3 (MEIS3) Mouse Monoclonal Antibody [Clone ID: OTI1B2]

For Research Use Only. Not for use in diagnostic procedures.