

Anti-SLC2A6 Mouse Monoclonal Antibody [Clone ID: OTI7E3]

Catalog Number: M11862

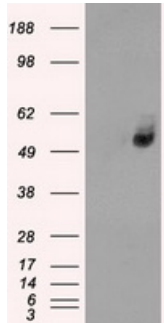
Overview

Product Name	Anti-SLC2A6 Mouse Monoclonal Antibody [Clone ID: OTI7E3]
Reactive Species	Human
Description	Boster Bio Anti-SLC2A6 (GLUT6) mouse monoclonal antibody, clone OTI7E3 (formerly 7E3). Catalog# M11862. Tested in IF, IHC. This antibody reacts with Human.
Application	IF, IHC, WB
Clonality	Monoclonal OTI7E3
Formulation	PBS (pH 7.3) containing 1% stabilizing protein, 50% glycerol and 0.02% sodium azide. This antibody is supplied in a stabilized formulation. Compatibility with conjugation reactions depends on the chemistry of the conjugation method used. For conjugation methods that are not compatible with the stabilizing components present in this formulation, a carrier-free antibody format is required.
Storage Instructions	Store at -20°C as received.
Host	Mouse
Uniprot ID	Q9UGQ3

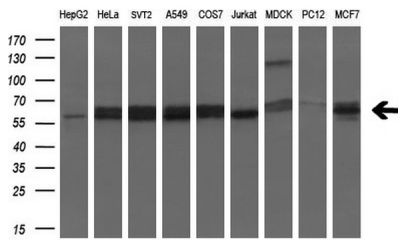
Technical Details

Immunogen	Full-length protein expressed in 293T cell transfected with human SLC2A6 expression vector
Isotype	IgG2a
Concentration	1.47 mg/ml
Purification	Purified from mouse ascites fluids or tissue culture supernatant by affinity chromatography (protein A/G)
Suggested Dilutions	IHC 1:200 IF 1:100

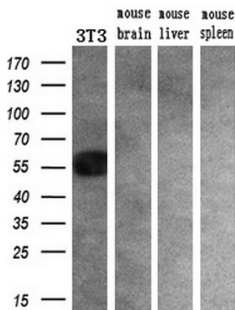
Anti-SLC2A6 Mouse Monoclonal Antibody [Clone ID: OTI7E3] (M11862) Images



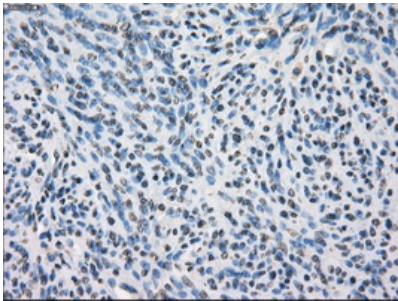
HEK293T cells were transfected with the pCMV6-ENTRY control (Left lane) or pCMV6-ENTRY SLC2A6 (Right lane) cDNA for 48 hrs and lysed. Equivalent amounts of cell lysates (5 ug per lane) were separated by SDS-PAGE and immunoblotted with anti-SLC2A6.



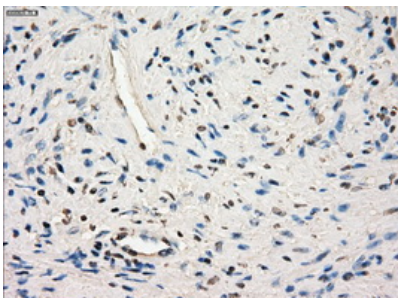
Western blot analysis of extracts (35ug) from 9 different cell lines by using anti-SLC2A6 monoclonal antibody (HepG2: human; HeLa: human; SVT2: mouse; A549: human; COS7: monkey; Jurkat: human; MDCK: canine; PC12: rat; MCF7: human) (1:200).



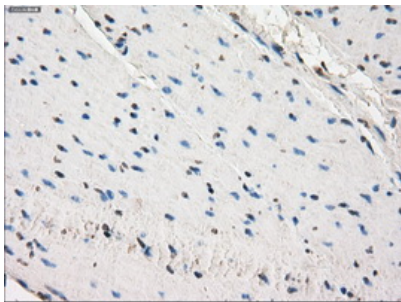
Western blot analysis of extracts (10ug) from a mouse cell line and 3 different mouse tissues by using anti-SLC2A6 monoclonal antibody (1:200).



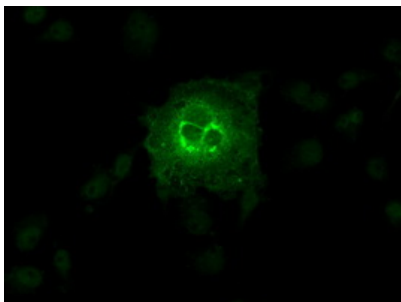
Immunohistochemical staining of paraffin-embedded endometrium tissue within the normal limits using anti-SLC2A6 mouse monoclonal antibody. (Heat-induced epitope retrieval by 10mM citric buffer)



Immunohistochemical staining of paraffin-embedded prostate tissue within the normal limits using anti-SLC2A6 mouse monoclonal antibody. (Heat-induced epitope retrieval by 10mM citric buffer)



Immunohistochemical staining of paraffin-embedded colon tissue within the normal limits using anti-SLC2A6 mouse monoclonal antibody. (Heat-induced epitope retrieval by 10mM citric buffer)



Anti-SLC2A6 mouse monoclonal antibody (M11862) immunofluorescent staining of COS7 cells transiently transfected by pCMV6-ENTRY SLC2A6.

Submit a product review to Biocompare.com

Submit a review of this product to Biocompare.com to receive a \$20 Amazon.com giftcard! Your reviews help your fellow scientists make the right decisions. Thank you for your contribution.



Anti-SLC2A6 Mouse Monoclonal Antibody [Clone ID: OT17E3]

For Research Use Only. Not for use in diagnostic procedures.