

Anti-ZFP38 (ZSCAN21) Mouse Monoclonal Antibody [Clone ID: OTI2E5]

Catalog Number: M11874

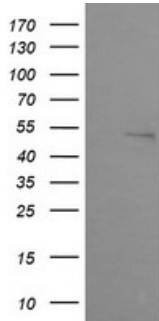
Overview

Product Name	Anti-ZFP38 (ZSCAN21) Mouse Monoclonal Antibody [Clone ID: OTI2E5]
Reactive Species	Dog, Human, Monkey, Mouse
Description	Boster Bio ZSCAN21 mouse monoclonal antibody, clone OTI2E5. Catalog# M11874. Tested in IF, IHC, WB. This antibody reacts with Human, Monkey, Mouse, Dog.
Application	IF, IHC, WB
Clonality	Monoclonal OTI2E5
Formulation	PBS (pH 7.3) containing 1% stabilizing protein, 50% glycerol and 0.02% sodium azide. This antibody is supplied in a stabilized formulation. Compatibility with conjugation reactions depends on the chemistry of the conjugation method used. For conjugation methods that are not compatible with the stabilizing components present in this formulation, a carrier-free antibody format is required.
Storage Instructions	Store at -20°C as received.
Host	Mouse
Uniprot ID	Q9Y5A6

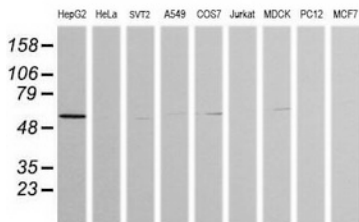
Technical Details

Immunogen	Full length human recombinant protein of human ZSCAN21 (NP_666019) produced in HEK293T cell.
Isotype	IgG1
Concentration	1 mg/ml
Purification	Purified from mouse ascites fluids or tissue culture supernatant by affinity chromatography (protein A/G)
Suggested Dilutions	WB 1:200~4000 IHC 1:150 IF 1:100

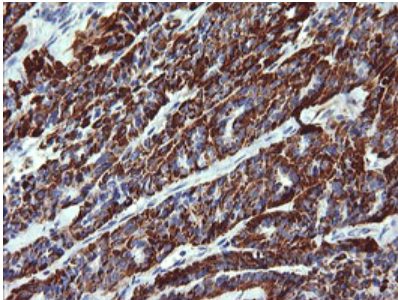
Anti-ZFP38 (ZSCAN21) Mouse Monoclonal Antibody [Clone ID: OTI2E5] (M11874) Images



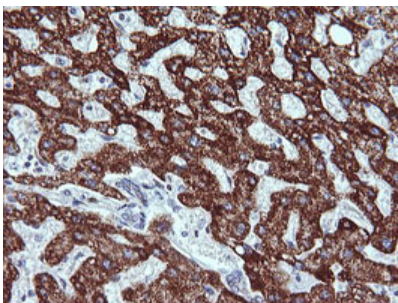
HEK293T cells were transfected with the pCMV6-ENTRY control (Left lane) or pCMV6-ENTRY ZSCAN21 (Right lane) cDNA for 48 hrs and lysed. Equivalent amounts of cell lysates (5 ug per lane) were separated by SDS-PAGE and immunoblotted with anti-ZSCAN21.



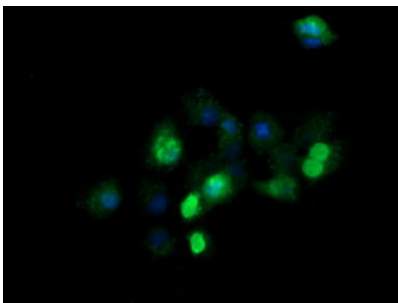
Western blot analysis of extracts (35ug) from 9 different cell lines by using anti-ZSCAN21 monoclonal antibody (HepG2: human; HeLa: human; SVT2: mouse; A549: human; COS7: monkey; Jurkat: human; MDCK: canine; PC12: rat; MCF7: human).



Immunohistochemical staining of paraffin-embedded Carcinoma of Human thyroid tissue using anti-ZSCAN21 mouse monoclonal antibody. (Heat-induced epitope retrieval by 10mM citric buffer)



Immunohistochemical staining of paraffin-embedded Human liver tissue within the normal limits using anti-ZSCAN21 mouse monoclonal antibody. (Heat-induced epitope retrieval by 10mM citric buffer)



Anti-ZSCAN21 mouse monoclonal antibody (M11874) immunofluorescent staining of COS7 cells transiently transfected by pCMV6-ENTRY ZSCAN21.

Submit a product review to Biocompare.com

Submit a review of this product to Biocompare.com to receive a \$20 Amazon.com giftcard! Your reviews help your fellow scientists make the right decisions. Thank you for your contribution.



Anti-ZFP38 (ZSCAN21) Mouse Monoclonal Antibody [Clone ID: OTI2E5]

For Research Use Only. Not for use in diagnostic procedures.