

Anti-NDUFAF7 Mouse Monoclonal Antibody [Clone ID: OTI6F10]

Catalog Number: M12013

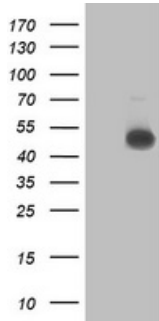
Overview

Product Name	Anti-NDUFAF7 Mouse Monoclonal Antibody [Clone ID: OTI6F10]
Reactive Species	Human, Mouse
Description	Boster Bio C2orf56 (NDUFAF7) mouse monoclonal antibody, clone OTI6F10 (formerly 6F10). Catalog# M12013. Tested in FC, WB. This antibody reacts with Human, Mouse.
Application	Flow Cytometry, WB
Clonality	Monoclonal OTI6F10
Formulation	PBS (pH 7.3) containing 1% stabilizing protein, 50% glycerol and 0.02% sodium azide. This antibody is supplied in a stabilized formulation. Compatibility with conjugation reactions depends on the chemistry of the conjugation method used. For conjugation methods that are not compatible with the stabilizing components present in this formulation, a carrier-free antibody format is required.
Storage Instructions	Store at -20°C as received.
Host	Mouse
Uniprot ID	Q7L592

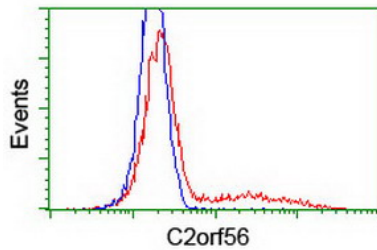
Technical Details

Immunogen	Full length human recombinant protein of human C2orf56 (NP_653337) produced in HEK293T cell.
Isotype	IgG2b
Concentration	1 mg/ml
Purification	Purified from mouse ascites fluids or tissue culture supernatant by affinity chromatography (protein A/G)
Suggested Dilutions	WB 1:500 Flow Cytometry 1:100

Anti-NDUFAF7 Mouse Monoclonal Antibody [Clone ID: OTI6F10] (M12013) Images



HEK293T cells were transfected with the pCMV6-ENTRY control (Left lane) or pCMV6-ENTRY C2orf56 (Right lane) cDNA for 48 hrs and lysed. Equivalent amounts of cell lysates (5 ug per lane) were separated by SDS-PAGE and immunoblotted with anti-C2orf56.



HEK293T cells transfected with either NDUFAF7 (Myc-DDK-tagged) overexpress plasmid (Red) or empty vector control plasmid (Blue) were immunostained by anti-C2orf56 antibody (M12013)

Submit a product review to Biocompare.com

Submit a review of this product to Biocompare.com to receive a \$20 Amazon.com giftcard! Your reviews help your fellow scientists make the right decisions. Thank you for your contribution.



Anti-NDUFAF7 Mouse Monoclonal Antibody [Clone ID: OTI6F10]

For Research Use Only. Not for use in diagnostic procedures.